




Damac Tower, Nine Elms

Price £1,105,000



† Illustrative purposes only.



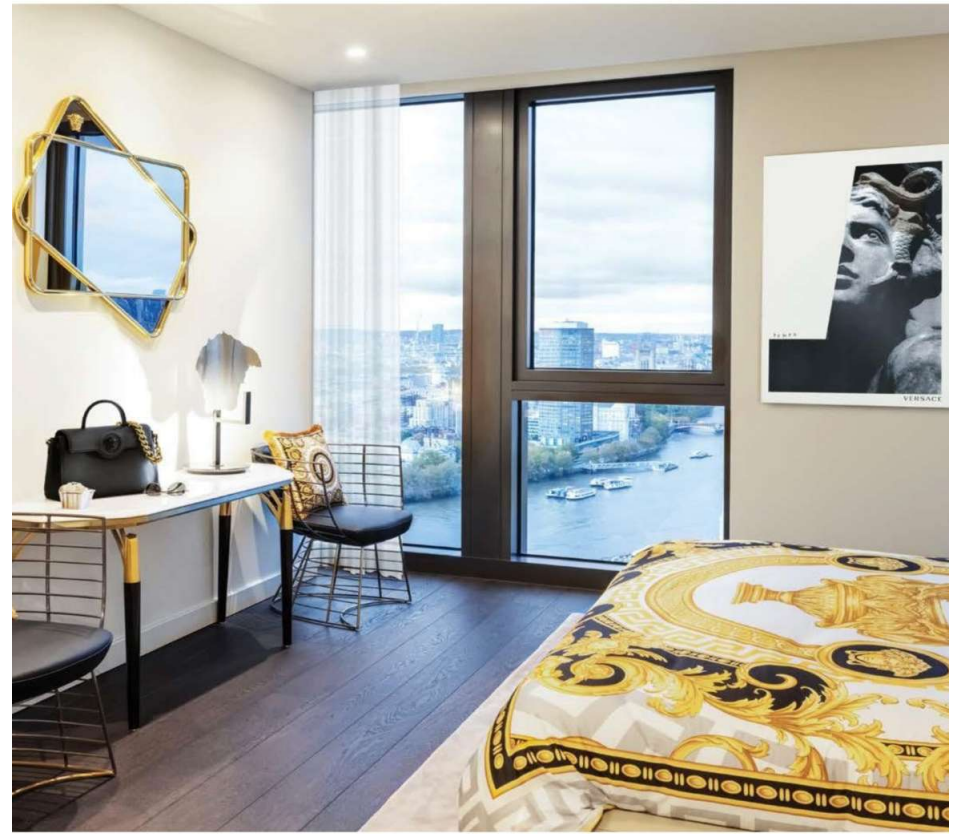
Damac Tower, gracing a distinctive London landmark, features a custom-designed façade across its 50 stories. This architectural marvel presents a premium assortment of 1, 2, and 3-bedroom luxury apartments, along with a limited selection of executive penthouses, all boasting lavish interiors designed by Versace Home.

Situated in the heart of Nine Elms, this new residential tower will bring you the ultimate in branded living experiences.

Finished to the highest standards, with stunning communal roof gardens to unwind and meander in.

Within the development, residents will get to enjoy the fantastic facilities which include a state of the art gymnasium, swimming pool, jacuzzi, residents lounge, secure parking (subject to additional price and availability).







ELMS



Features

- 2 Bedrooms
- 2 Bathrooms
- 2 Living rooms
- 24 Hr security
- Communal terrace
- Designed by Versace
- Gym
- Spa

Parking available through separate
Negotiation

Additional information:

Bedrooms: 2 bedrooms

Bathrooms: 2 bathrooms

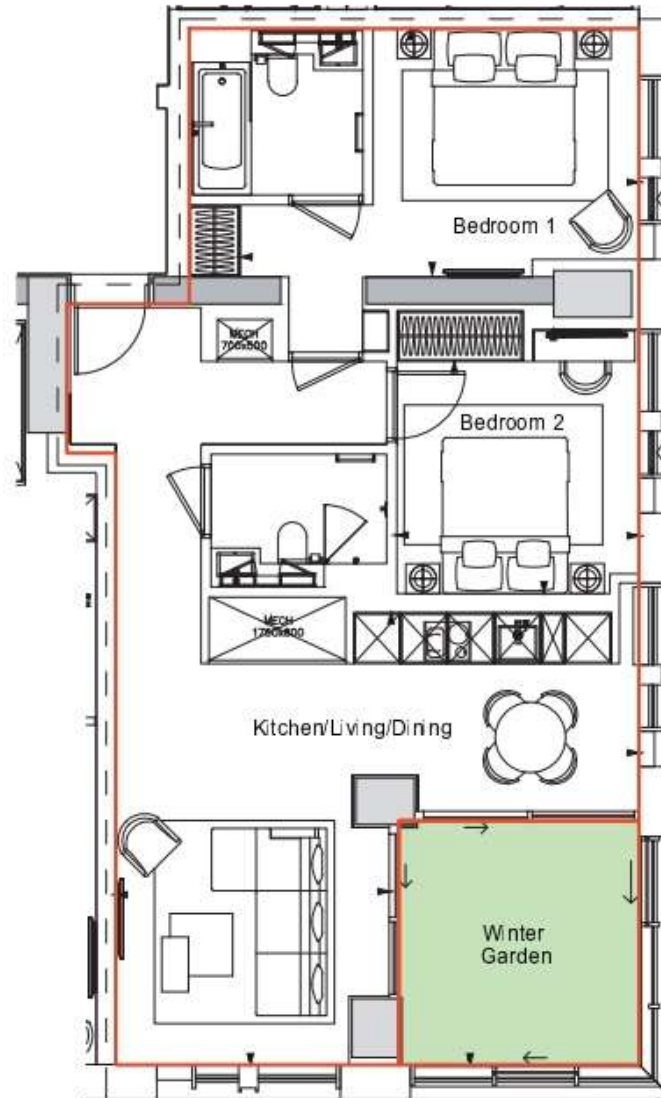
Outside space: Winter garden

Price Range: £1,105,000

Square Foot: 927 sq. ft

We have other units available in this developm





| | |
|-----------------------|--------------------------|
| Kitchen/Living/Dining | 22' 0" / 11' 6" x 19' 0" |
| Bedroom 1 | 16' 9" x 10' 4" |
| Bedroom 2 | 10' 2" x 11' 1" / 9' 9" |
| Apartment Area | 831.3 ft ² |
| Winter Garden | 103.7 ft ² |
| Total Area | 935.0 ft ² |





Global 1
23 Berkeley Square
London W1J 6JE
T: +44 (0)20 3355 0191 W: www.theglobal1.com