




**Marylebone  
Square,  
Marylebone**

**Price £1,591,000**





This exquisite 1-bedroom, 1-bathroom apartment offers the epitome of luxurious living. This new build residence boasts a timeless elegance that is sure to captivate discerning buyers. Upon entering, you are greeted by pristine hardwood flooring that graces every room, lending an air of sophistication. The open-concept living spaces are bathed in natural light streaming through floor-to-ceiling windows, creating an ambiance of warmth and comfort. The kitchen is a culinary masterpiece, adorned with top-of-the-line appliances and sleek marble countertops. Modern conveniences seamlessly blend with classic design elements, making it a chef's dream. The bathrooms are no less impressive, featuring exquisite marble tiling, rainfall showers, and deep soaking tubs for a spa-like experience. One of the standout features of this apartment is its cutting-edge underfloor heating system, ensuring a cozy atmosphere throughout the colder months. This innovative technology provides efficient warmth while maintaining an unobstructed aesthetic, enhancing both comfort and energy efficiency.

Designed from the inside out, and with an enviable central London location, W1 Place is perfect for the discerning individual, the professional couple and the modern family. The highly crafted quality throughout the building means you'll be feeling that reassuring click with every door you close, and the satisfying sound of your feet on the oak floor. Light pours in through the floor-to-ceiling bay windows, creating a sense of both openness and warmth, while the open-plan living and kitchen areas provide a thoroughly modern space to host your friends or enjoy a cosy night in. This two-bedroom apartment provides luxurious living, designed with you at the heart.







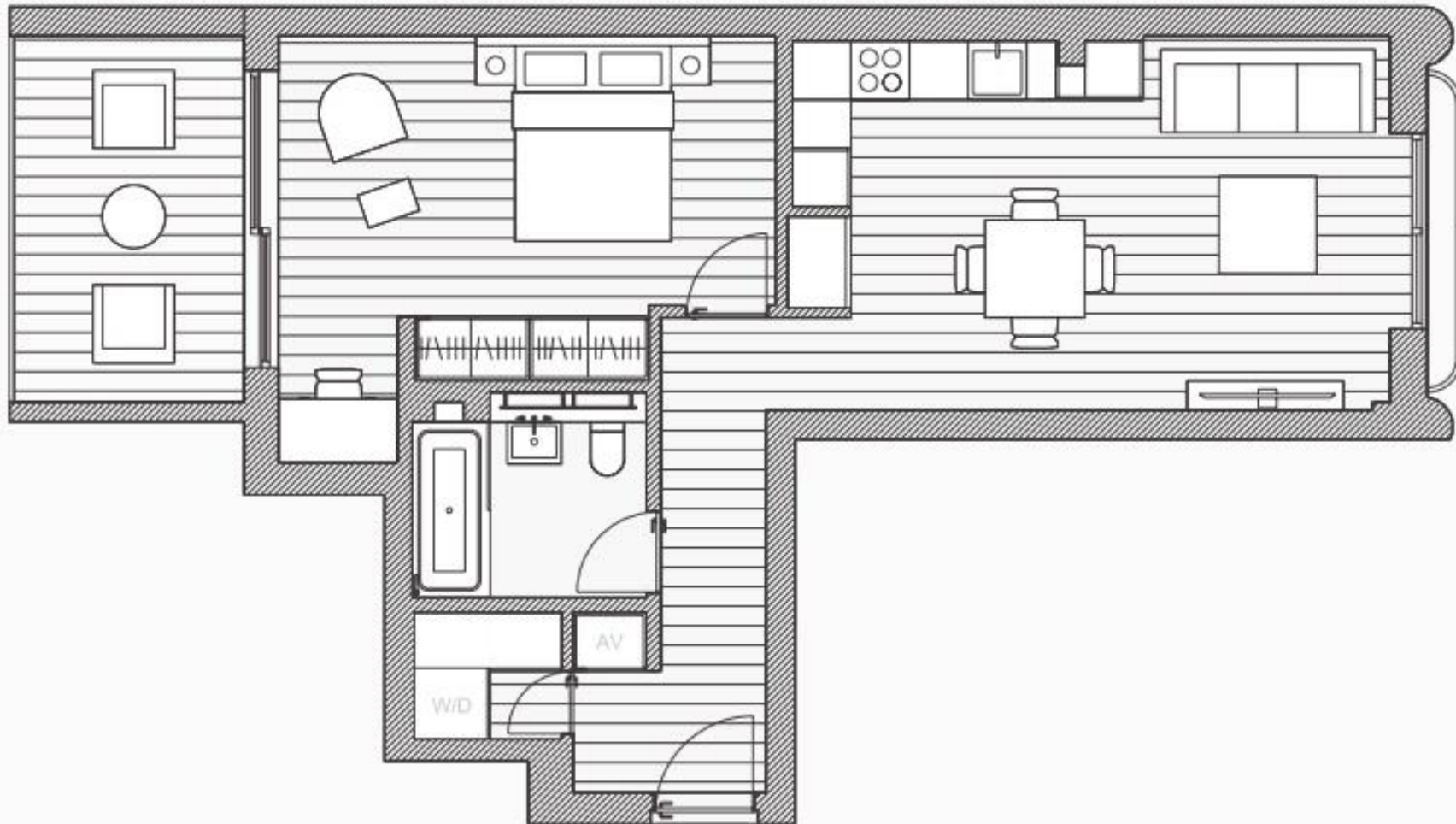


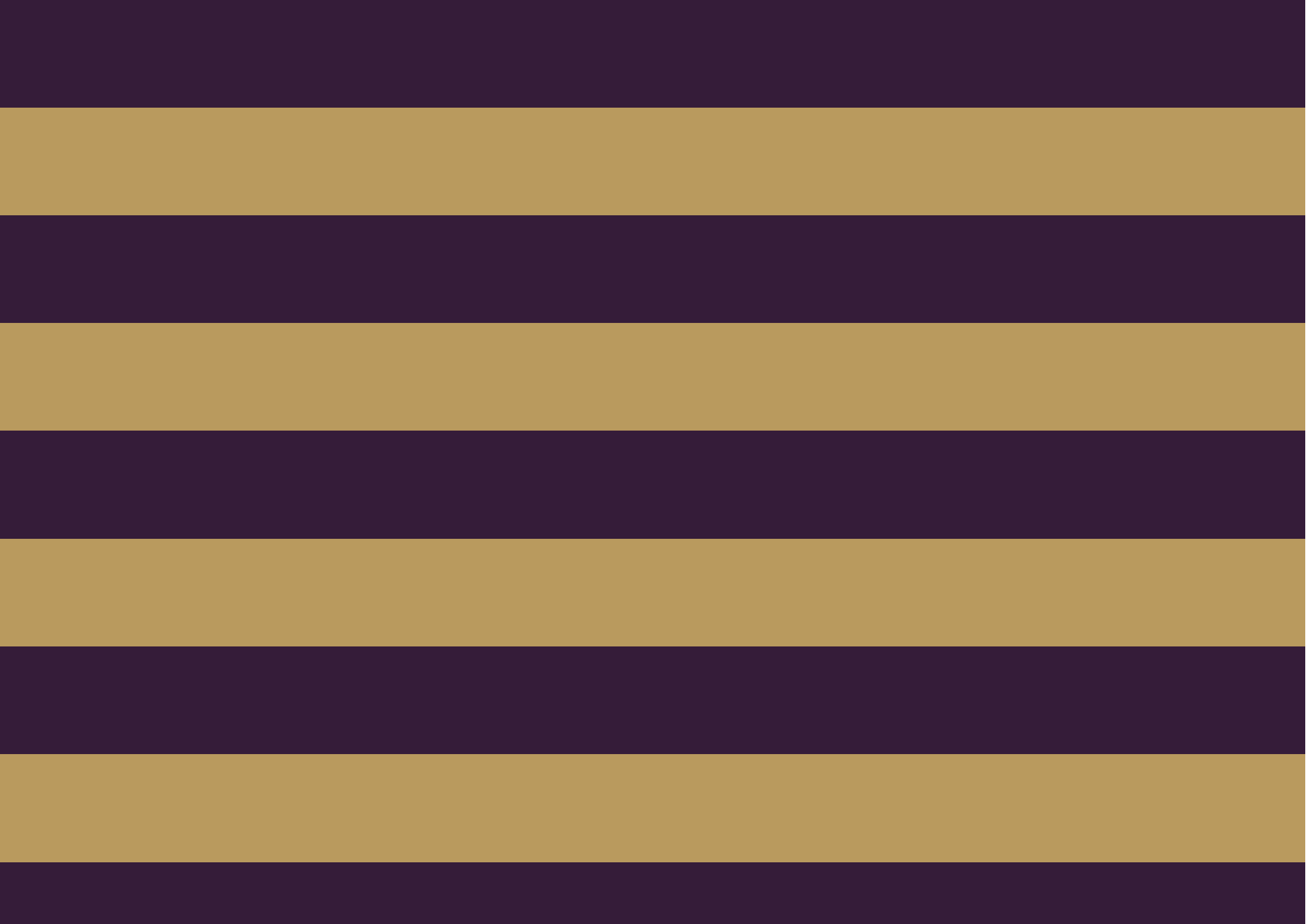


## *Features*

- 1 Bedroom
- 1 Bathroom
- 1 Reception
- Concierge
- Lift
- Secured allocated parking
- Underfloor heating system

Living/Kitchen/Dining	6.1m x 3.8m
Master Bedroom	5.1m x 3.5m
Bathroom	2.4m x 1.8m
<b>Total</b>	59m <sup>2</sup>
	634sqft
<b>Terrace</b>	9.1m <sup>2</sup>
	98sqft









The Global 1  
23 Berkeley Square  
London W1J 6JE  
T: +44 (0)20 3355 0191 W: [www.theglobal1.com](http://www.theglobal1.com)