



**15 Freckleton Street, Blackpool**

Blackpool

Offers Over **£75,000**



# 15 Freckleton Street

## Blackpool

Nestled within the vibrant community of Blackpool, this charming 2-bedroom mid-terraced house presents an ideal investment opportunity or first-time purchase. Boasting a strategic location in close proximity to Blackpool Town Centre, residents will have easy access to an array of retail shops and eateries, as well as nearby schools and the esteemed Blackpool & The Fylde University Centre. With no onward chain, this property is ready to welcome its new owners into a world of comfort and convenience.

Step inside to discover a well-designed layout featuring an entrance vestibule, a cosy lounge, a dining room, a fitted kitchen, and a 3-piece suite bathroom on the ground floor. Ascend to the first floor to find two generously sized double bedrooms, creating the perfect space for relaxation and rest. Complete with uPVC double glazing and gas central heating, this home is designed for practicality and comfort. Outside, a yard at the rear offers a private space, with rear gate access providing added convenience.

Whether you're looking to invest or settle into your first home, this property offers a fantastic opportunity to embrace all that Blackpool has to offer.

Council Tax band: A

Tenure: Freehold

- 2 Bedroom Mid Terraced House
- Ideal Investment Opportunity Or First Time Buy
- Situated Within Close Proximity To Blackpool Town Centre With An Abundance Of Retail Shops And Eating Establishments
- Nearby Schools And Blackpool & The Fylde University Centre
- No Onward Chain
- Entrance Vestibule, Lounge, Dining Room, Kitchen, 3 Piece Suite Bathroom To The Ground Floor
- 2 Double Bedrooms To The First Floor
- uPVC Double Glazing, Gas Central Heating





#### Entrance Vestibule

3' 8" x 3' 1" (1.12m x 0.94m)

#### Lounge

13' 8" x 12' 3" (4.17m x 3.73m)

#### Dining Room

10' 7" x 10' 2" (3.23m x 3.10m)

#### Kitchen

12' 9" x 6' 7" (3.89m x 2.00m)

#### Bathroom

8' 0" x 6' 2" (2.44m x 1.87m)

#### Landing

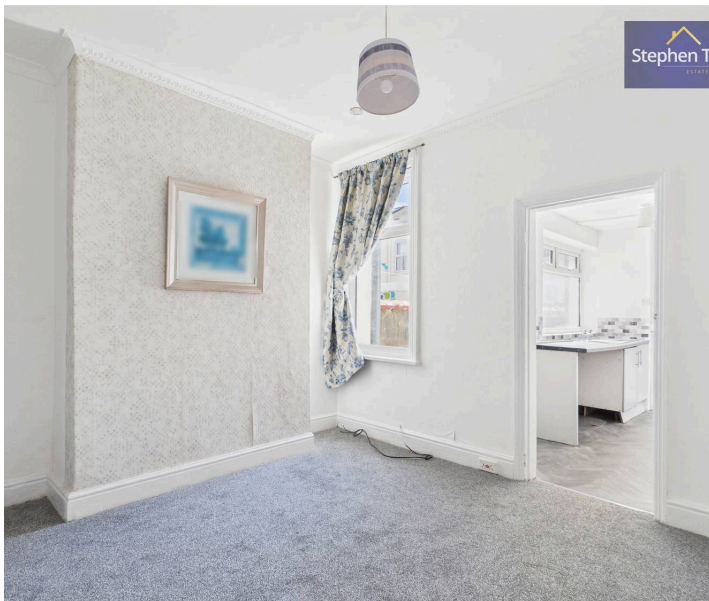
2' 7" x 2' 9" (0.80m x 0.83m)

#### Bedroom 1

13' 8" x 12' 2" (4.17m x 3.72m)

#### Bedroom 2

12' 2" x 10' 3" (3.72m x 3.13m)















## Stephen Tew Estate Agents

Stephen Tew Estate Agents, 132 Highfield Road - FY4 2HH

01253 401111

[info@stephentew.co.uk](mailto:info@stephentew.co.uk)

[www.stephentew.co.uk](http://www.stephentew.co.uk)

