



C7, Coastal Point 647-655 New South Promenade

Blackpool

Offers Over £225,000



C7

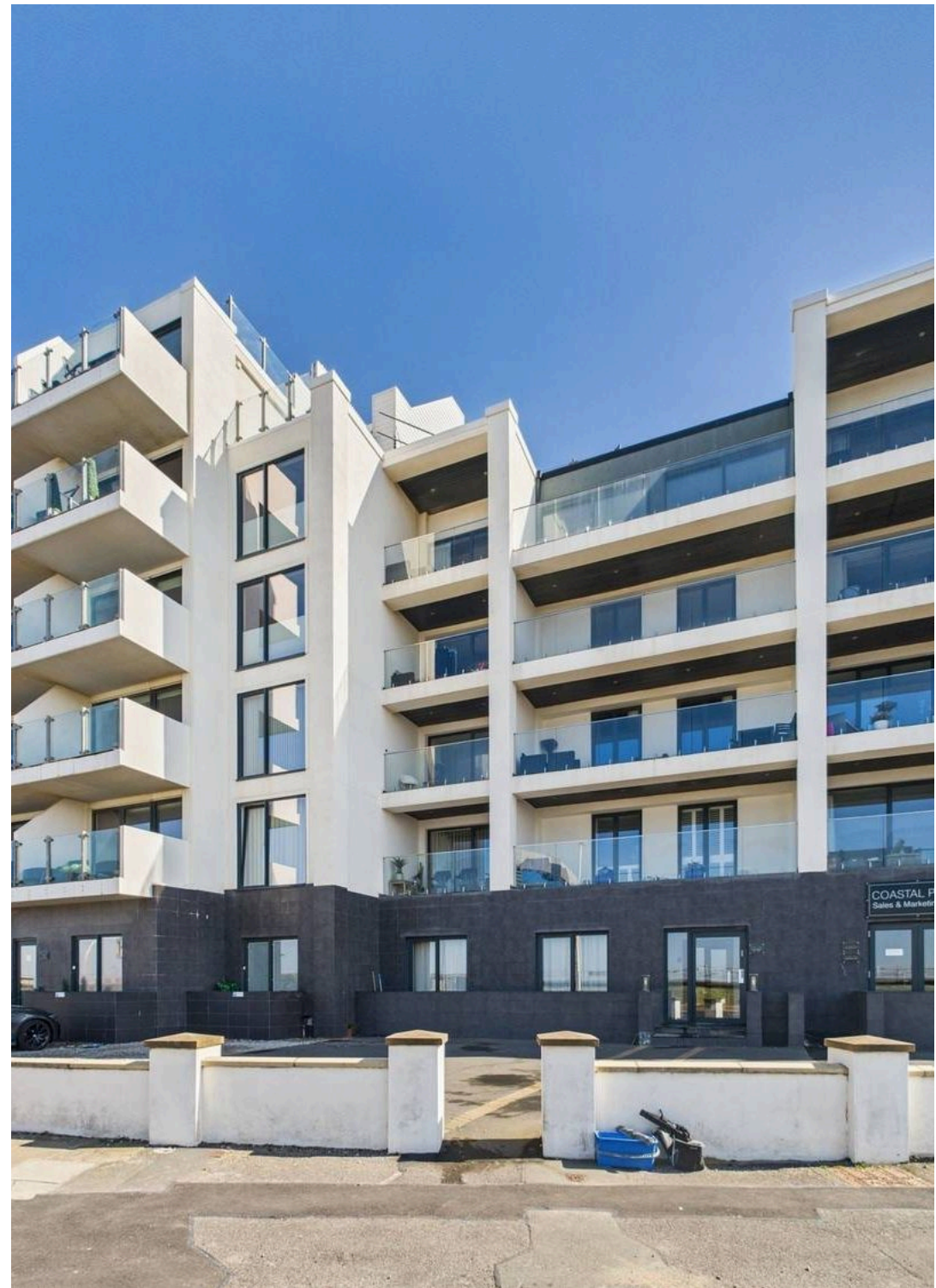
## Coastal Point 647-655 New South Promenade, Blackpool

Nestled within the prestigious Coastal Point Development, this exquisite 2 bedroom apartment presents a luxurious coastal lifestyle. Situated on the first floor, this immaculate residence offers a private balcony providing stunning sea views. The master bedroom features fitted wardrobes, a 3-piece en-suite, and patio doors opening to the balcony, while the second bedroom is equally spacious. The grand multi-functional open plan kitchen/living room is equipped with a central island, integrated oven, hob, fridge, freezer, and dishwasher, complemented by the living room boasting a media wall and additional patio doors leading to the balcony. A modern 3-piece bathroom with a walk-in shower cubicle adds to the allure of this elegant living space.

Outside, residents can relish in the communal roof terrace offering luxury composite decking, ample seating, and un-paralleled sea views, perfect for relaxing or entertaining. The community also grants access to a well-equipped gym/fitness studio, catering to residents' wellness needs. Laid-back evenings can be spent admiring the captivating sunsets from the balcony or enjoying the tranquillity of the communal terrace. With the added convenience of allocated parking and the absence of an onward chain, this property is a rare find in an enviable location, offering the ultimate blend of sophisticated coastal living and modern comfort.

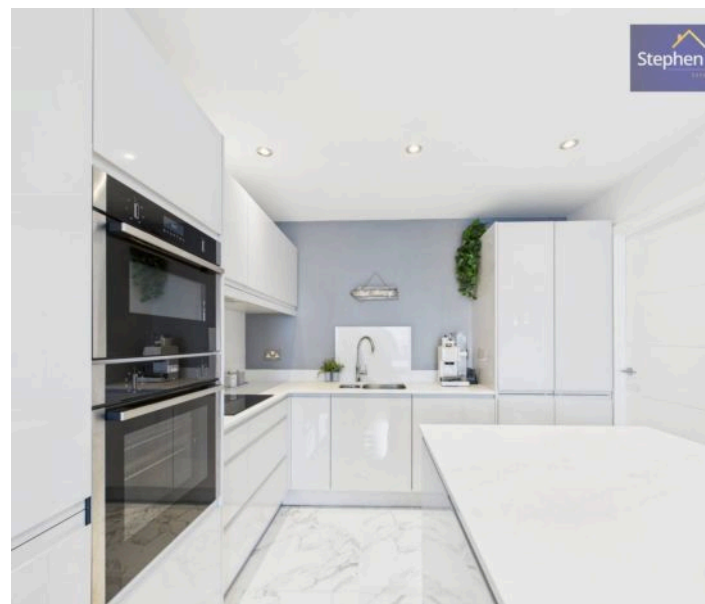
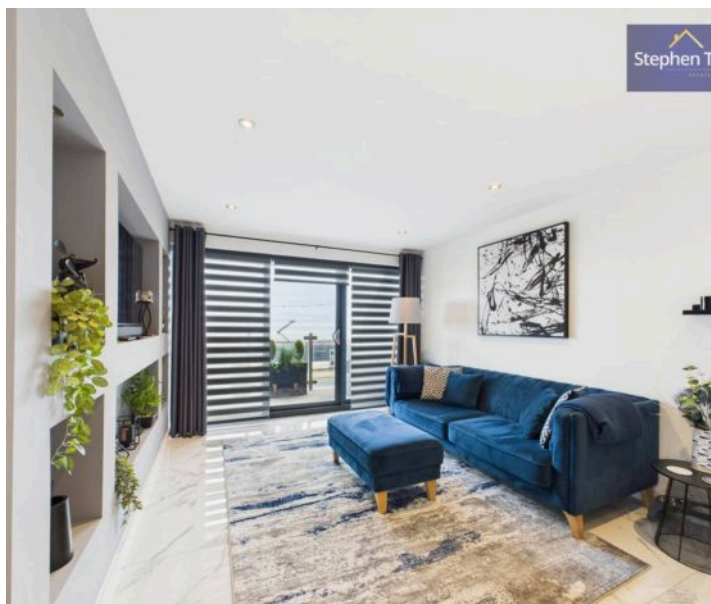
Council Tax band: C

Tenure: Leasehold





- First Floor 2 Bedroom Apartment In The Prestigious Coastal Point Development
- Private Balcony With Stunning Sea Views
- 2 Double Bedrooms, One Boasting Fitted Wardrobes, 3 Piece En-Suite And Patio Door Opening Up To The Balcony
- Stunning Multi-Functional Open Plan Kitchen/Living Room With Central Island, Integrated Oven, Hob, Fridge, Freezer And Dishwasher
- Living Room Boasting Media Wall And Patio Doors Opening Up To The Balcony
- Modern 3 Piece Bathroom With Walk In Shower Cubicle
- Communal Roof Terrace With Luxury Composite Decking, Seating And Unprecedented Sea Views
- Resident Access To The Communal Gym/Fitness Studio
- Allocated Parking
- No Onward Chain







**Entrance Hallway**  
14' 8" x 5' 8" (4.46m x 1.72m)

**Kitchen/Living area**  
23' 7" x 10' 10" (7.19m x 3.30m)

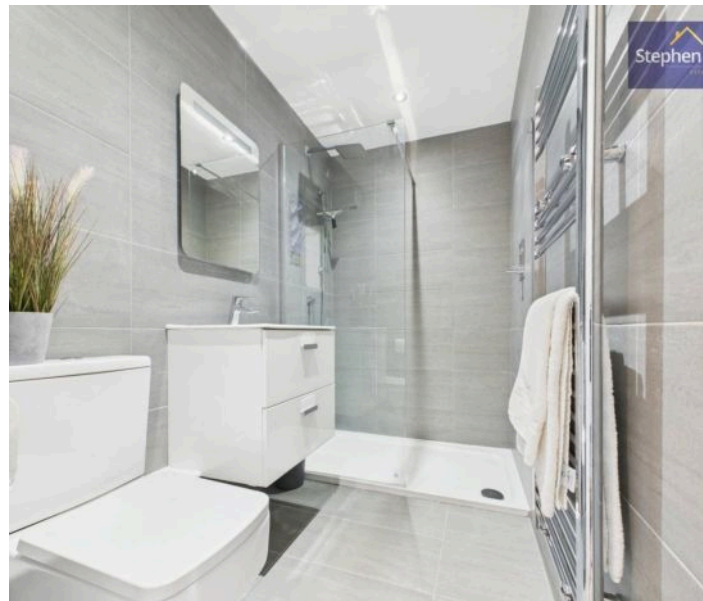
**Bedroom 1**  
13' 5" x 10' 11" (4.08m x 3.32m)

**En-suite**  
4' 8" x 7' 7" (1.42m x 2.31m)

**Bedroom 2**  
8' 4" x 12' 0" (2.53m x 3.65m)

**Bathroom**  
6' 10" x 4' 8" (2.09m x 1.41m)

**Balcony**  
6' 2" x 23' 1" (1.89m x 7.03m)





### Entrance Hallway

14' 8" x 5' 8" (4.46m x 1.72m)

### Kitchen/Living area

23' 7" x 10' 10" (7.19m x 3.30m)

### Bedroom 1

13' 5" x 10' 11" (4.08m x 3.32m)

### En-suite

4' 8" x 7' 7" (1.42m x 2.31m)

### Bedroom 2

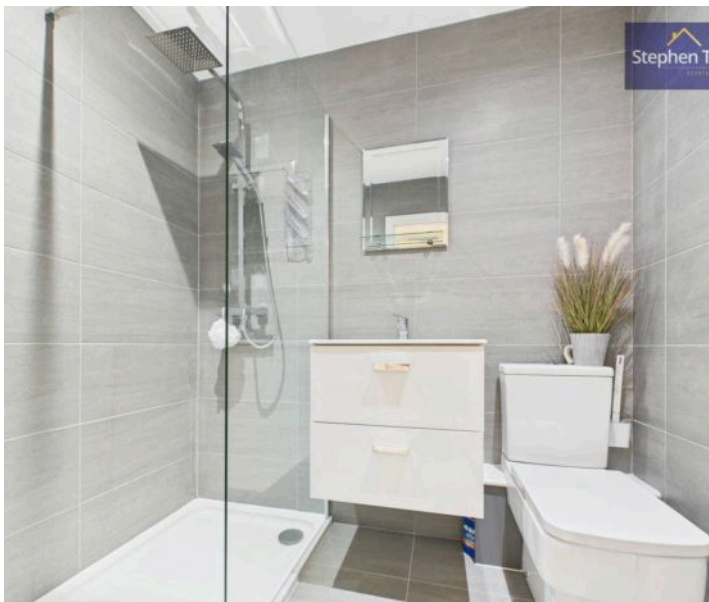
8' 4" x 12' 0" (2.53m x 3.65m)

### Bathroom

6' 10" x 4' 8" (2.09m x 1.41m)

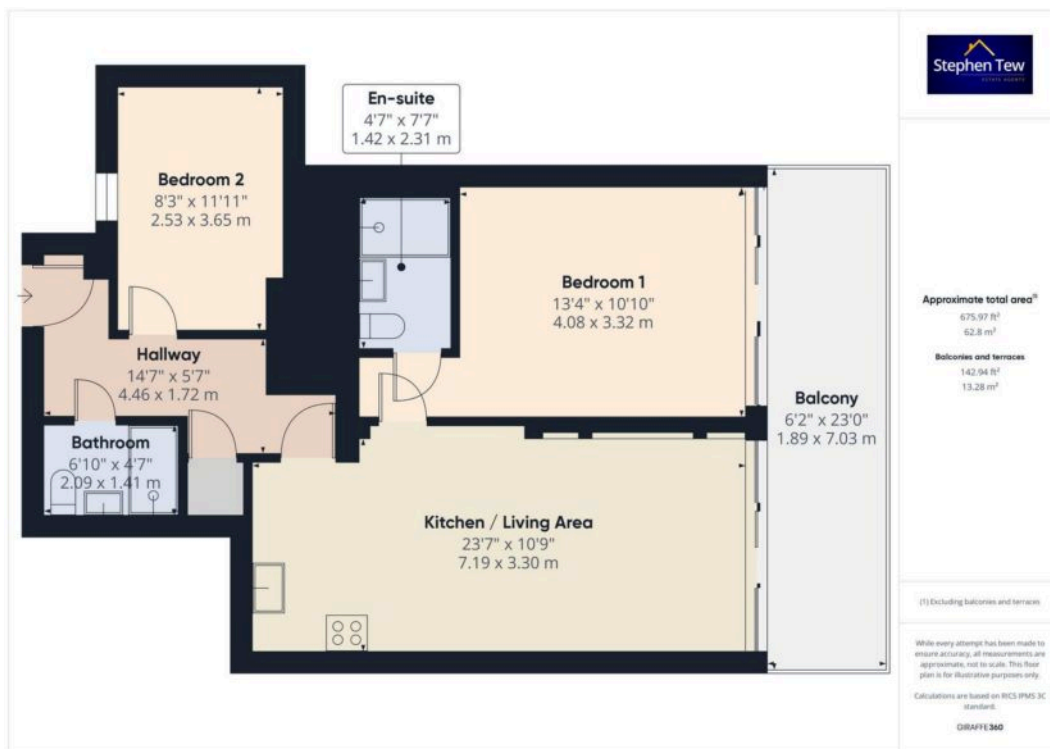
### Balcony

6' 2" x 23' 1" (1.89m x 7.03m)

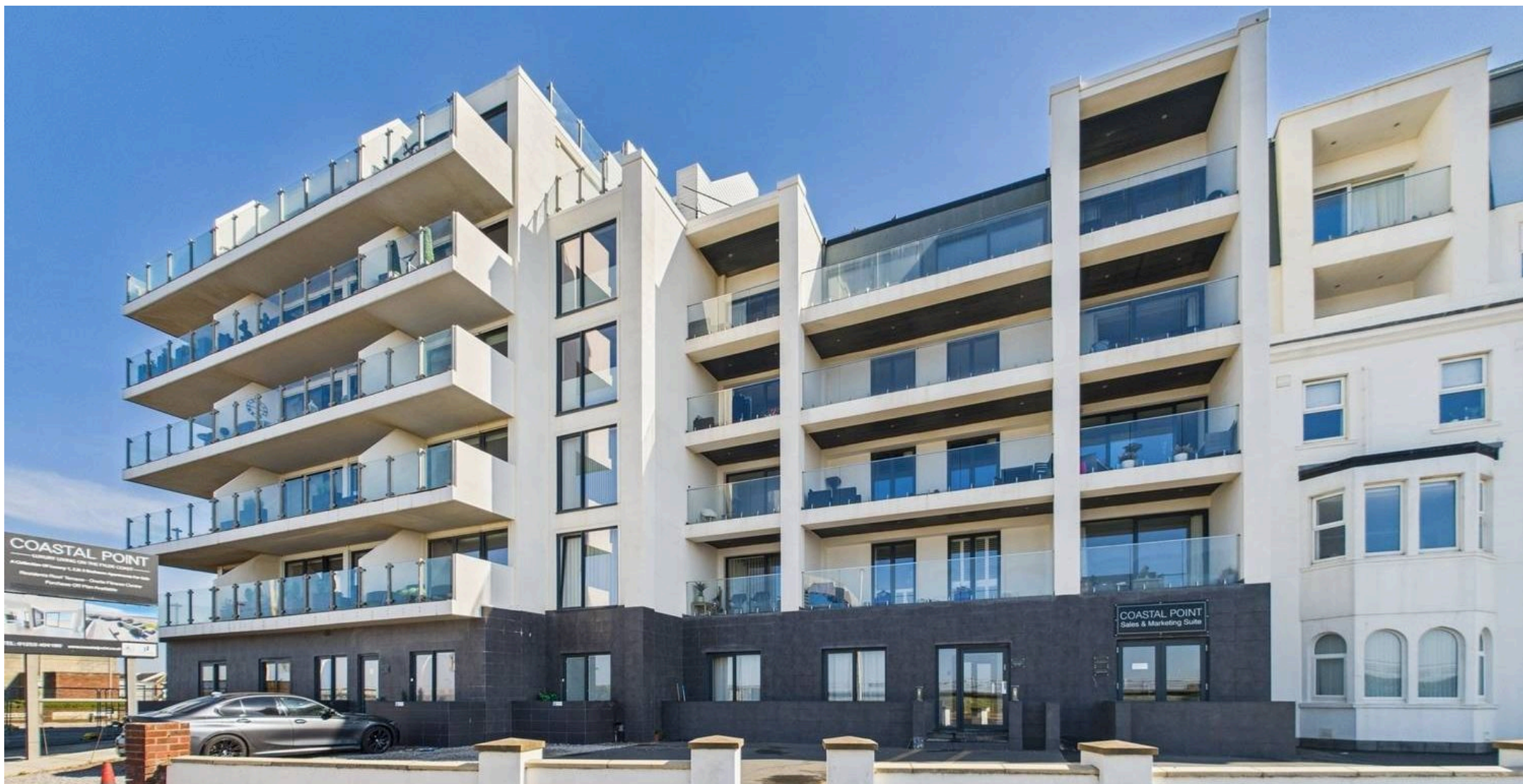












## Stephen Tew Estate Agents

Stephen Tew Estate Agents, 132 Highfield Road – FY4 2HH

01253 401111

[info@stephentew.co.uk](mailto:info@stephentew.co.uk)

[www.stephentew.co.uk](http://www.stephentew.co.uk)

