



**59 Fir Grove, Blackpool**

Blackpool

Offers Over **£150,000**



# 59 Fir Grove

## Blackpool

Nestled in a sought-after location, this impressive four-bedroom end of terrace house with a garage and off-road parking is a rare find. As you step through the front door, you are welcomed by a bright hallway that leads to the heart of the home; a spacious lounge/dining room where natural light floods in through large windows. The well-appointed kitchen boasts integrated appliances including an oven and gas hob. Additionally, a sunroom with patio doors beckons you outside to the South- West facing garden, creating a seamless indoor-outdoor living experience ideal for entertaining guests or enjoying a peaceful afternoon. Upstairs, a generous landing guides you to the four bedrooms and a modern bathroom.

Council Tax band: B

Tenure: Freehold

- Four Bedroom End Of Terrace House With Garage And Off-Road Parking
- Hallway, Spacious Lounge/ Dining Room, Kitchen With Integrated Oven And Gas Hob, Sunroom With Patio Doors Leading To The Garden
- Landing, Modern Bathroom
- South-West Facing Enclosed Rear Garden







#### **Hallway**

5' 5" x 13' 0" (1.65m x 3.96m)

#### **Lounge/ Dining Room**

10' 4" x 26' 11" (3.15m x 8.20m)

#### **Kitchen**

15' 5" x 5' 9" (4.70m x 1.74m)

#### **Sunroom**

5' 2" x 8' 10" (1.57m x 2.70m)

#### **Bedroom 1**

9' 1" x 20' 8" (2.76m x 6.29m)

#### **Bedroom 2**

10' 3" x 7' 3" (3.12m x 2.22m)

#### **Bedroom 3**

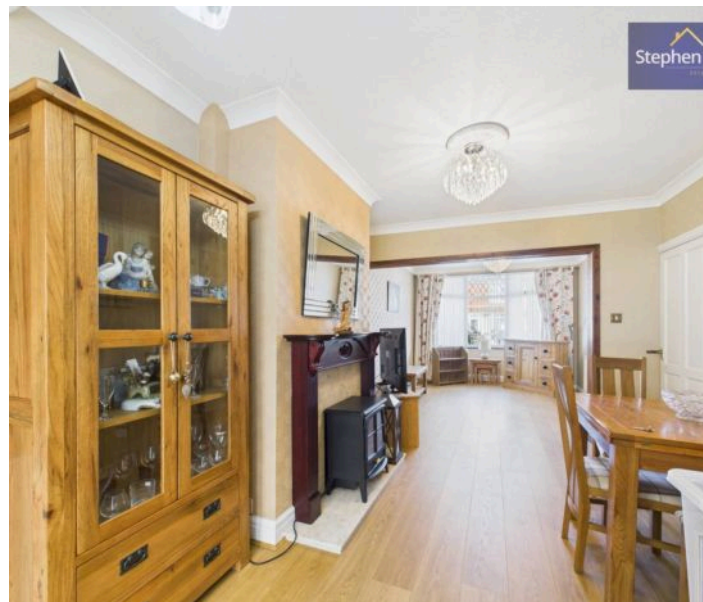
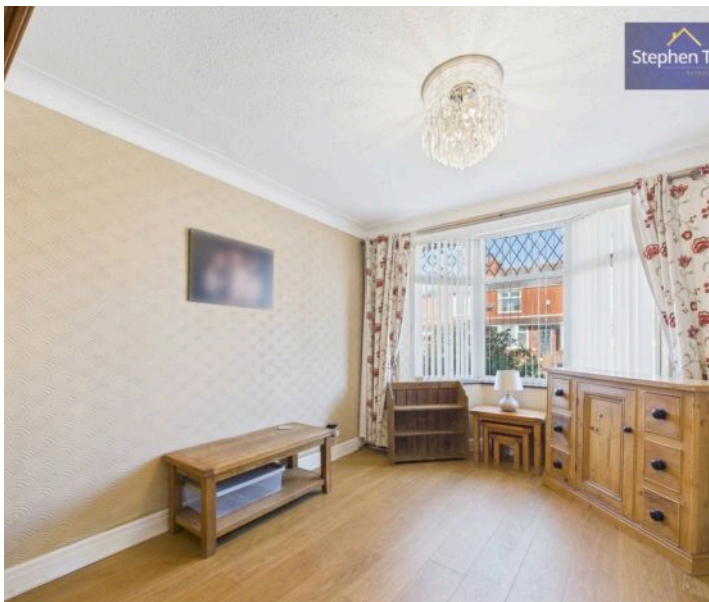
10' 2" x 10' 8" (3.09m x 3.25m)

#### **Bedroom 4**

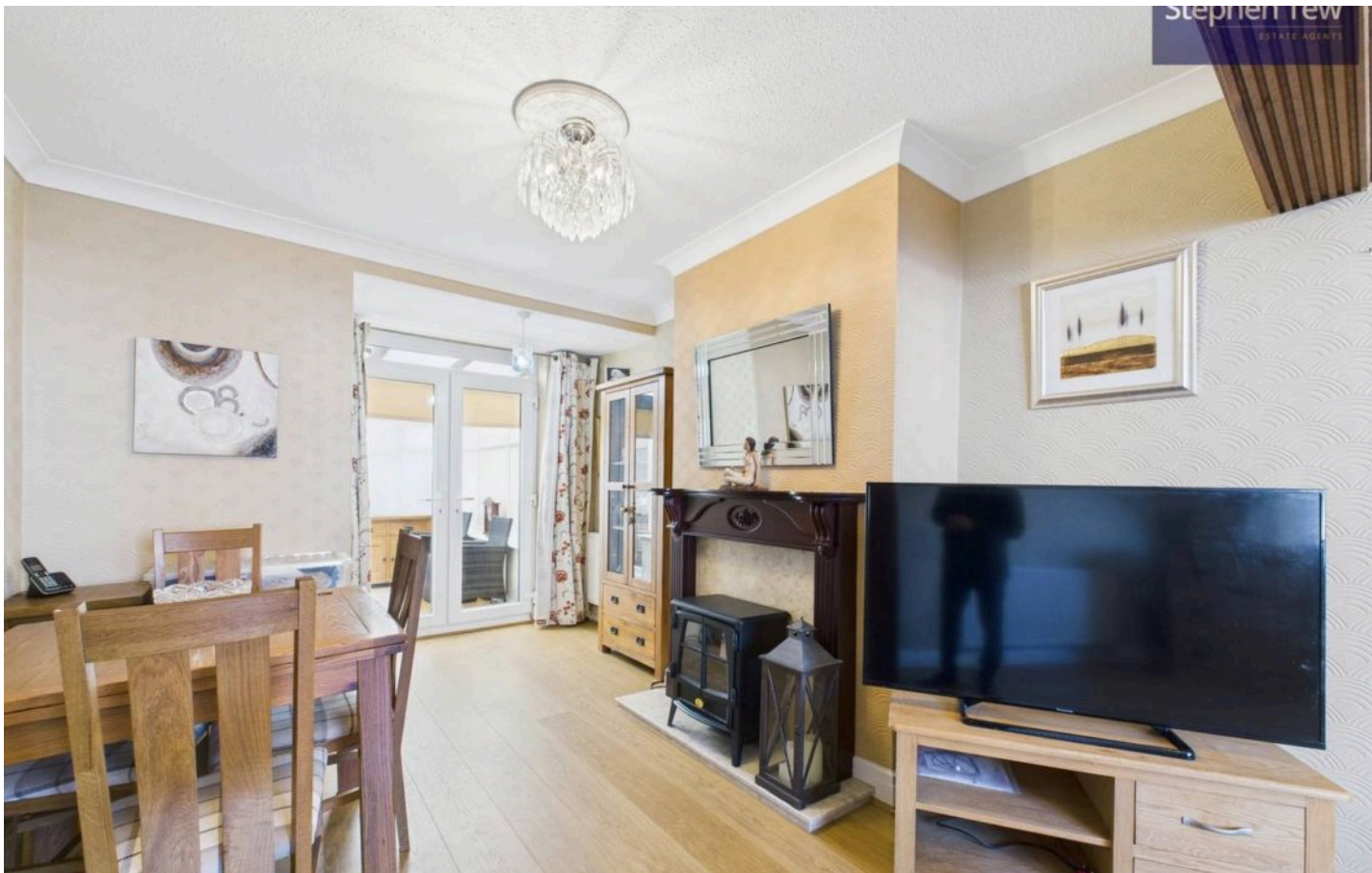
5' 5" x 7' 3" (1.66m x 2.22m)

#### **Bathroom**

5' 5" x 5' 5" (1.64m x 1.64m)







#### Hallway

5' 5" x 13' 0" (1.65m x 3.96m)

#### Lounge/ Dining Room

10' 4" x 26' 11" (3.15m x 8.20m)

#### Kitchen

15' 5" x 5' 9" (4.70m x 1.74m)

#### Sunroom

5' 2" x 8' 10" (1.57m x 2.70m)

#### Bedroom 1

9' 1" x 20' 8" (2.76m x 6.29m)

#### Bedroom 2

10' 3" x 7' 3" (3.12m x 2.22m)

#### Bedroom 3

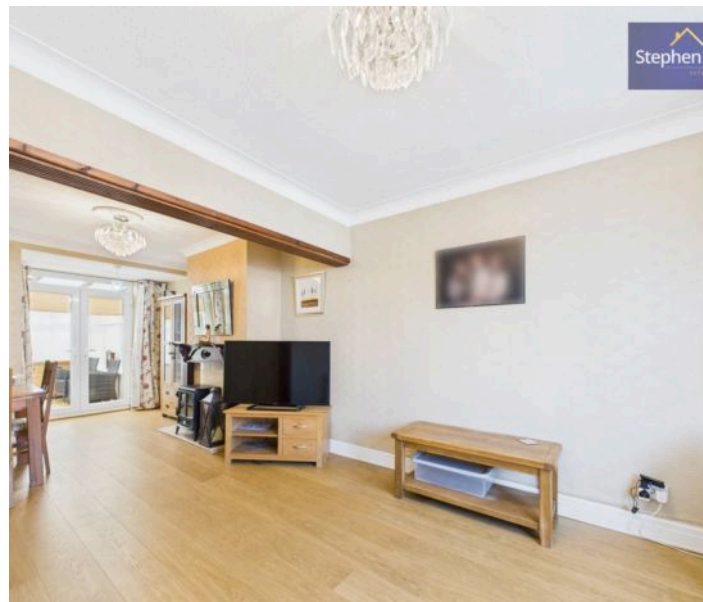
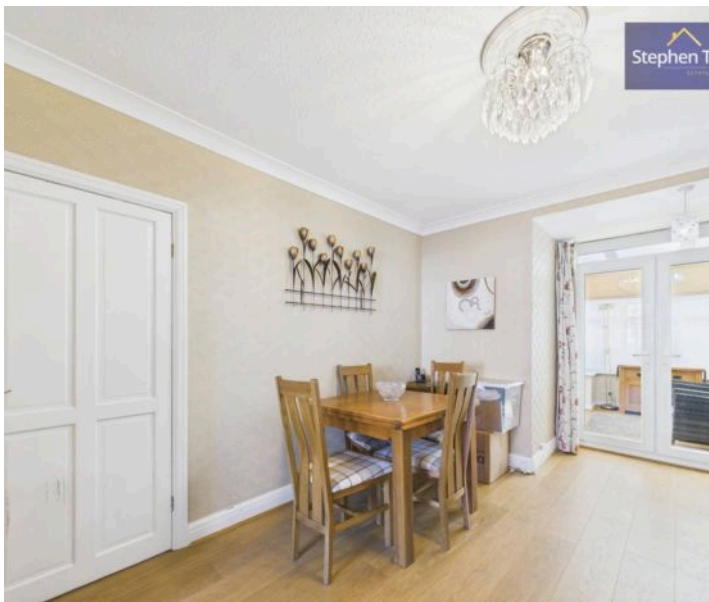
10' 2" x 10' 8" (3.09m x 3.25m)

#### Bedroom 4

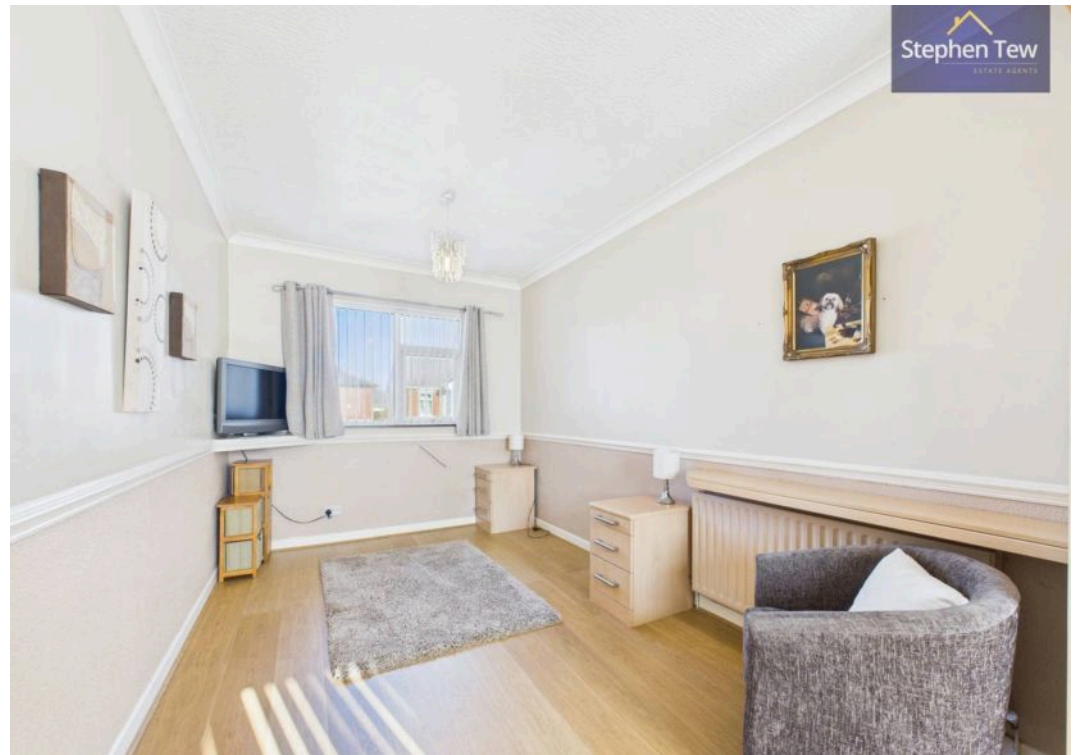
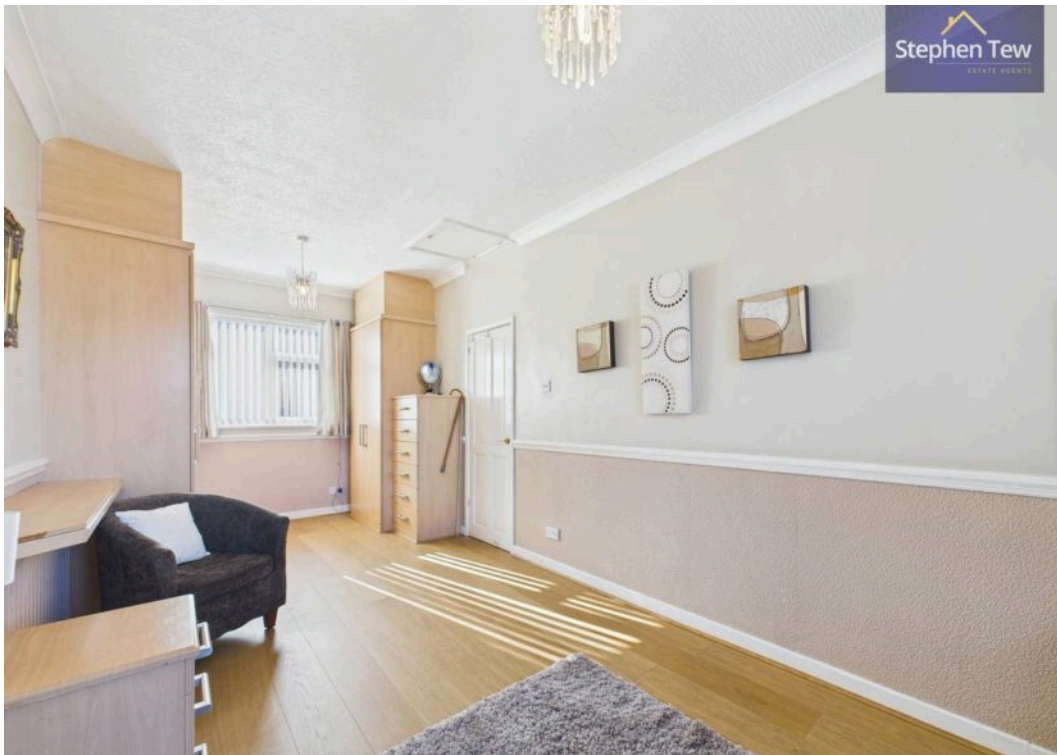
5' 5" x 7' 3" (1.66m x 2.22m)

#### Bathroom

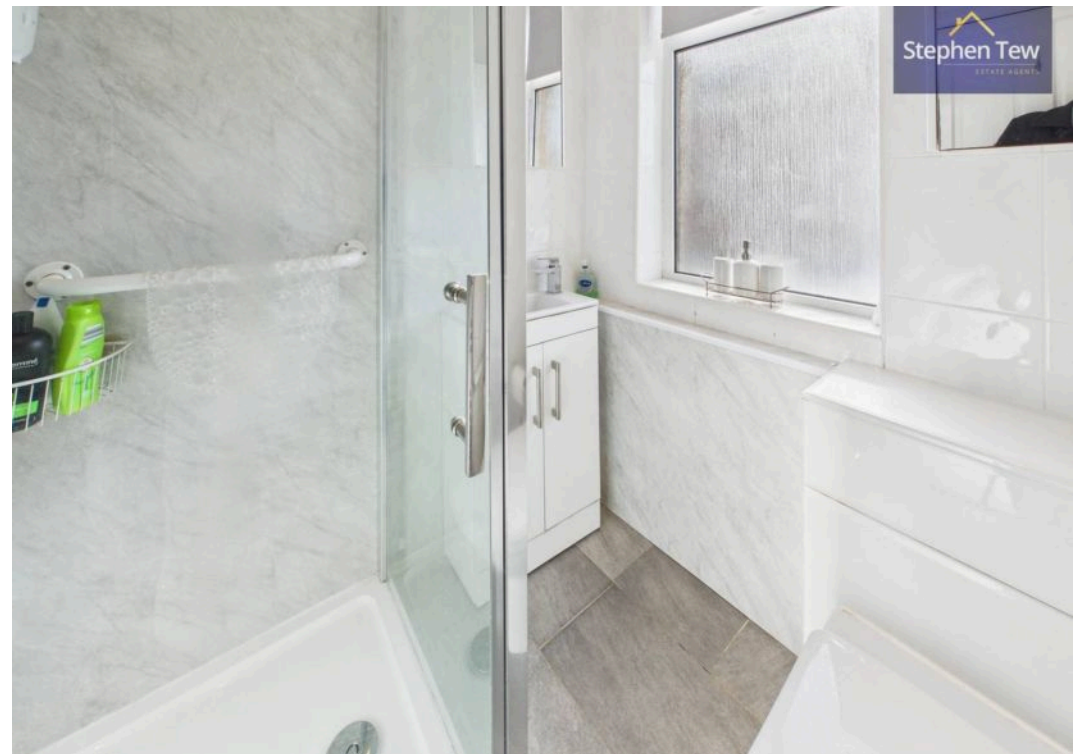
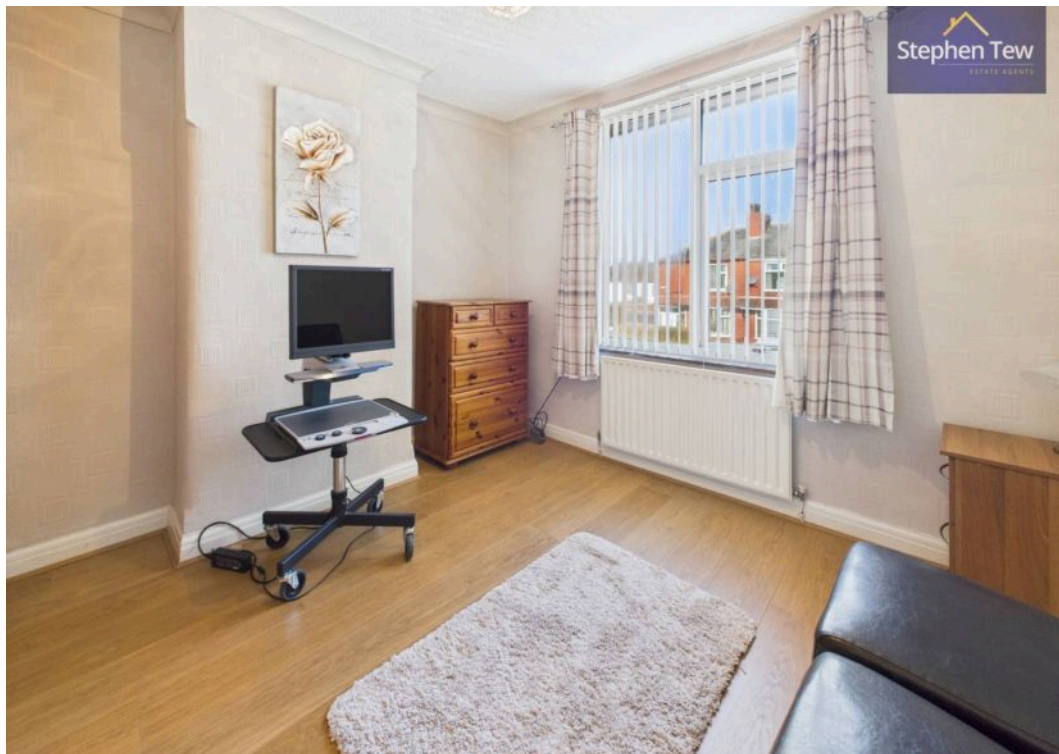
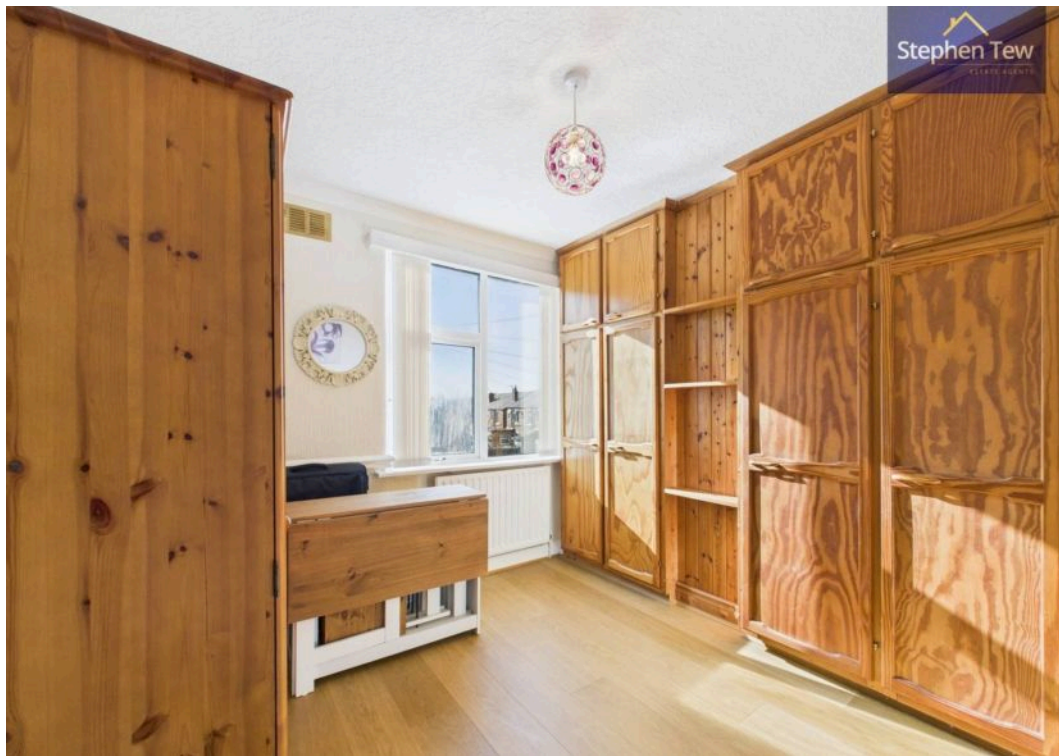
5' 5" x 5' 5" (1.64m x 1.64m)















**REAR GARDEN**

**FRONT GARDEN**

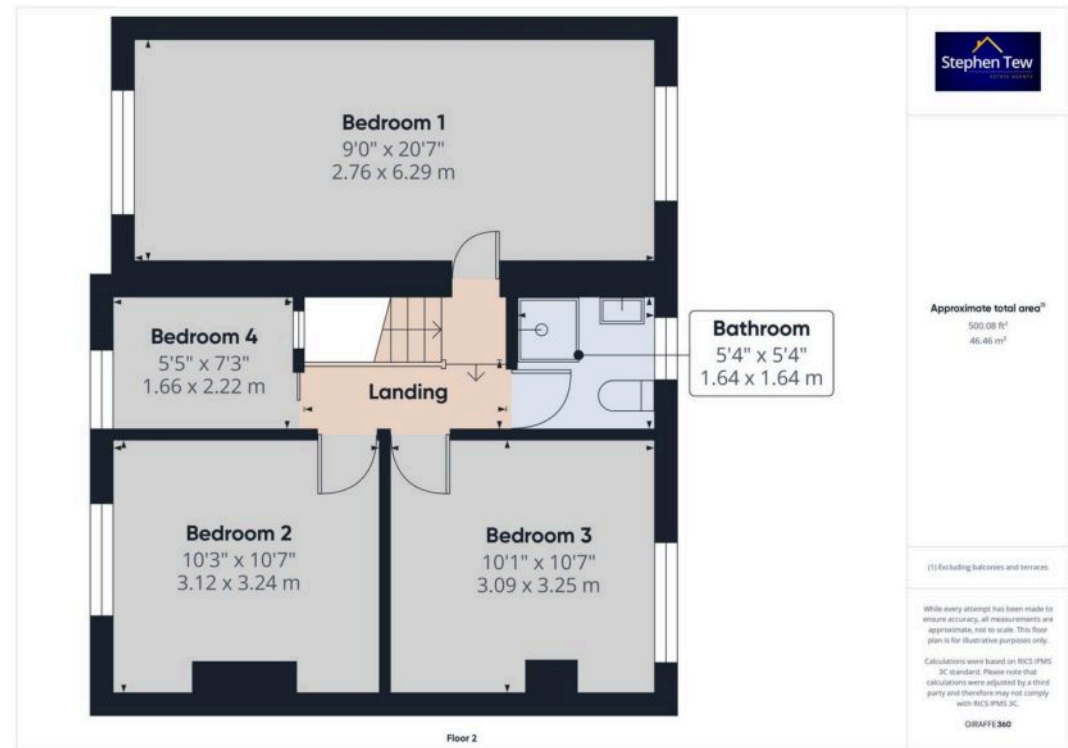
**GARAGE**

Single Garage

**OFF STREET**

2 Parking Spaces









## Stephen Tew Estate Agents

Stephen Tew Estate Agents, 132 Highfield Road - FY4 2HH

01253 401111

[info@stephentew.co.uk](mailto:info@stephentew.co.uk)

[www.stephentew.co.uk](http://www.stephentew.co.uk)

