

74 Grasmere Road, Blackpool

Blackpool

Offers Over **£140,000**

74 Grasmere Road

Blackpool, Blackpool

Situated a prime location offering convenience and comfort, this 4-bedroom terraced house presents a rare opportunity for a growing family seeking a spacious abode. Boasting a versatile layout, this property includes an entrance vestibule leading to a hallway, a cosy lounge featuring a wood burner and double doors that open up to the dining room, perfect for entertaining. The kitchen is fully equipped with integrated appliances including a fridge/freezer and dishwasher, while a utility room, office/playroom and storage room provide ample space for practical living. The first floor encompasses four well-appointed bedrooms, with one boasting fitted wardrobes, a 4-piece suite bathroom, and an additional loft room ideal for a home office or living space. With the added convenience of no onward chain, this property is a rare find in a bustling area.

Situated within close proximity to local schools, Blackpool Town Centre with its array of shops and dining establishments, and excellent transport links, this home offers a harmonious blend of convenience and comfort, making it a truly remarkable find in the heart of a sought-after locale. Don't miss the chance to make this property your own and experience the epitome of modern living in a vibrant community.

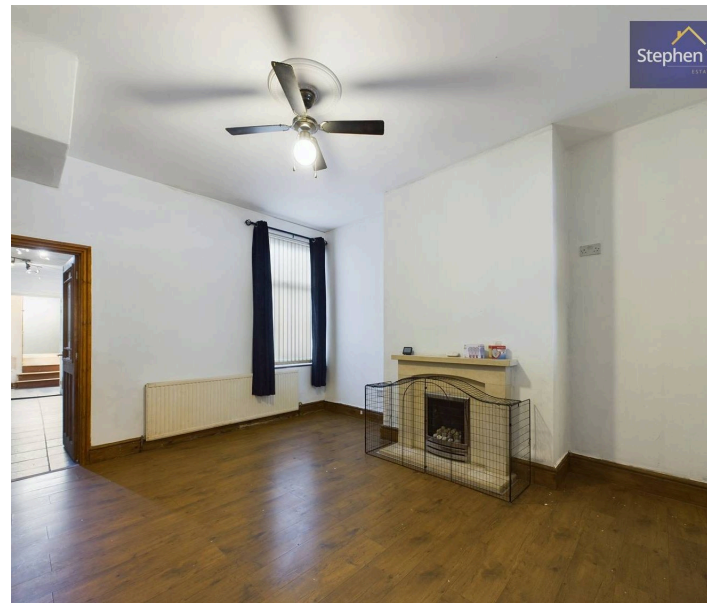
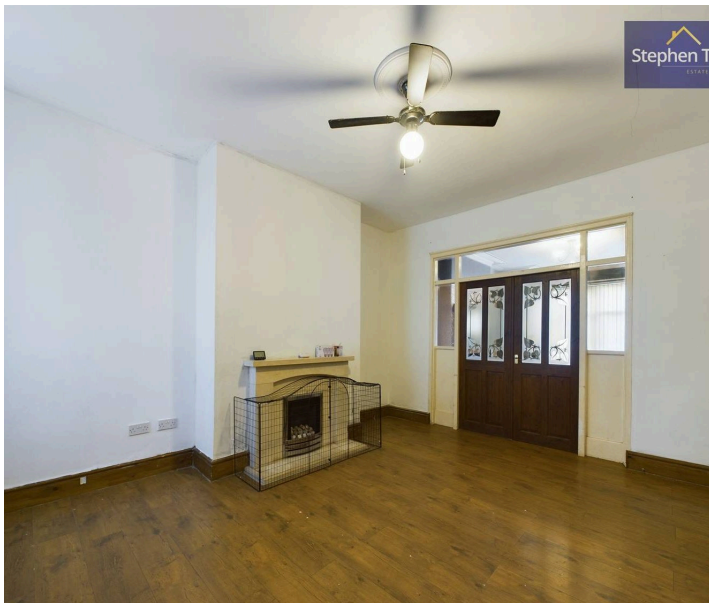
Council Tax band: B

Tenure: Freehold





- 4 Bedroom Family Home With Additional Loft Room
- Prime Location Within Close Proximity To Local Schools, Blackpool Town Centre With An Abundance Of Shops And Eating Establishments And Fantastic Transport Links
- Entrance Vestibule, Hallway, Lounge With Wood Burner And Double Doors Leading To The Dining Room, Kitchen With Integrated Fridge/Freezer & Dishwasher, Utility Room, Office/Playroom, Storage Rooms
- 4 Bedrooms To The First Floor, One Boasting Fitted Wardrobes, 4 Piece Suite Bathroom And Additional Loft Room
- No Onward Chain
- Boiler Approx. 10 Years Old, Last Serviced October 2024, Located In Utility Room





Entrance Vestibule

Entrance Vestibule

Hallway

12' 2" x 3' 5" (3.72m x 1.03m)

Lounge

15' 11" x 12' 3" (4.86m x 3.74m)

Dining Room

14' 9" x 12' 10" (4.49m x 3.90m)

Kitchen

16' 3" x 10' 6" (4.96m x 3.20m)

Utility Room

5' 11" x 6' 2" (1.80m x 1.87m)

WC

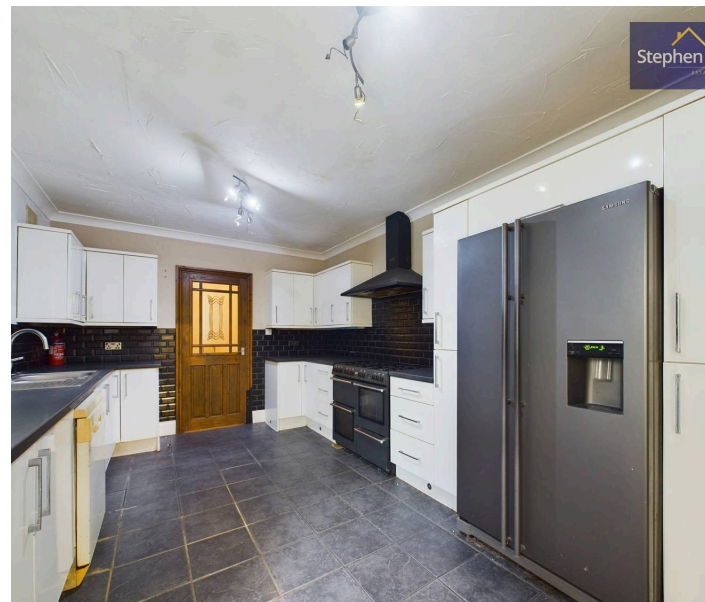
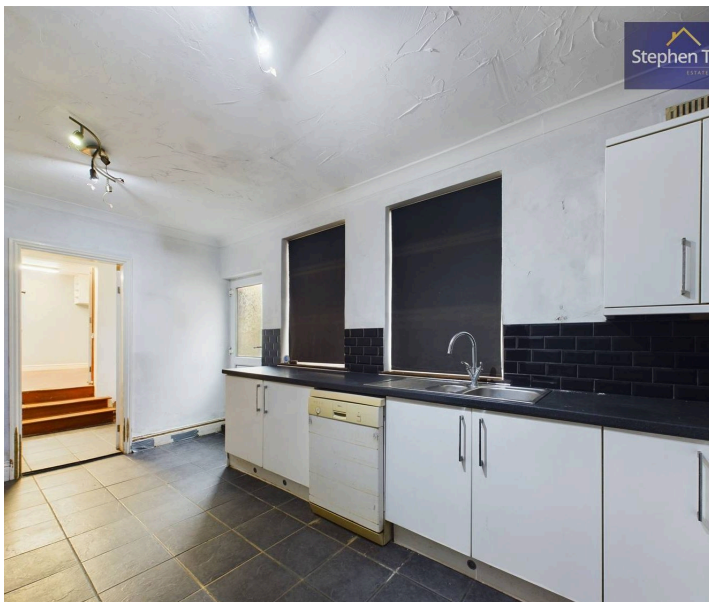
5' 10" x 5' 9" (1.79m x 1.76m)

Office/Play Room

11' 11" x 10' 0" (3.63m x 3.05m)

Storage Room

6' 5" x 10' 11" (1.95m x 3.34m)





Landing

Bedroom 1

14' 5" x 10' 8" (4.39m x 3.24m)

Bedroom 2

14' 9" x 10' 2" (4.50m x 3.11m)

Bedroom 3

13' 3" x 8' 10" (4.03m x 2.70m)

Bedroom 4

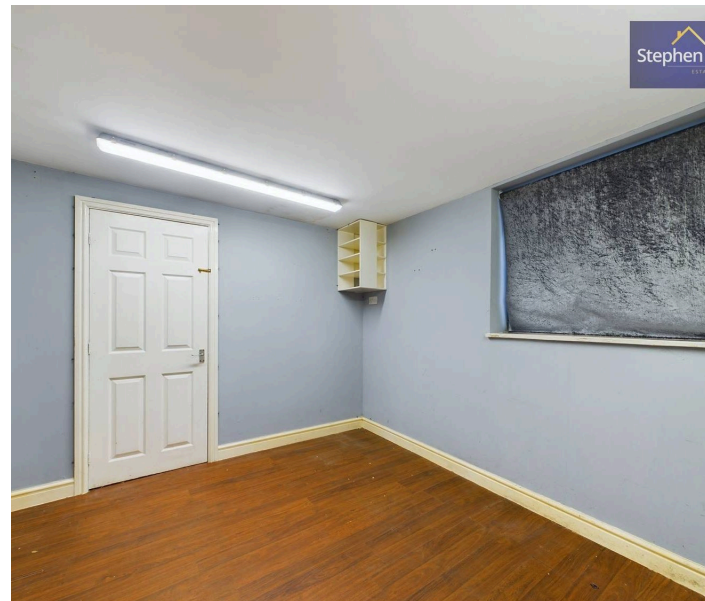
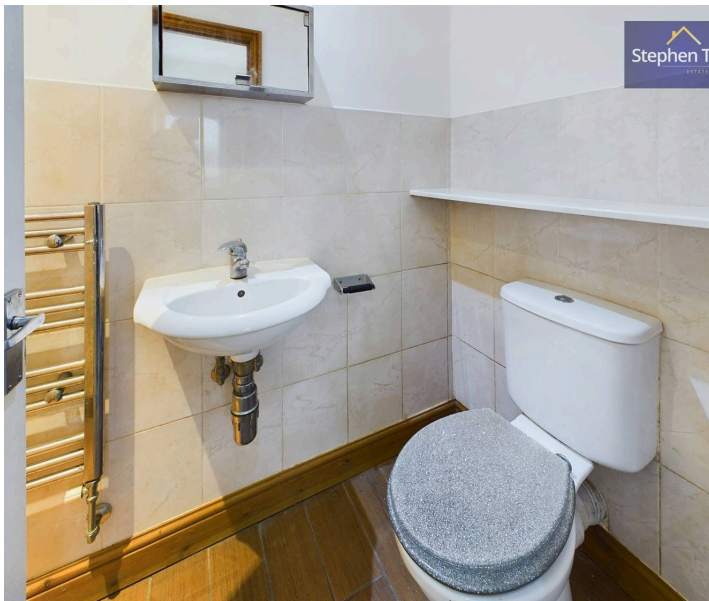
10' 0" x 5' 9" (3.06m x 1.74m)

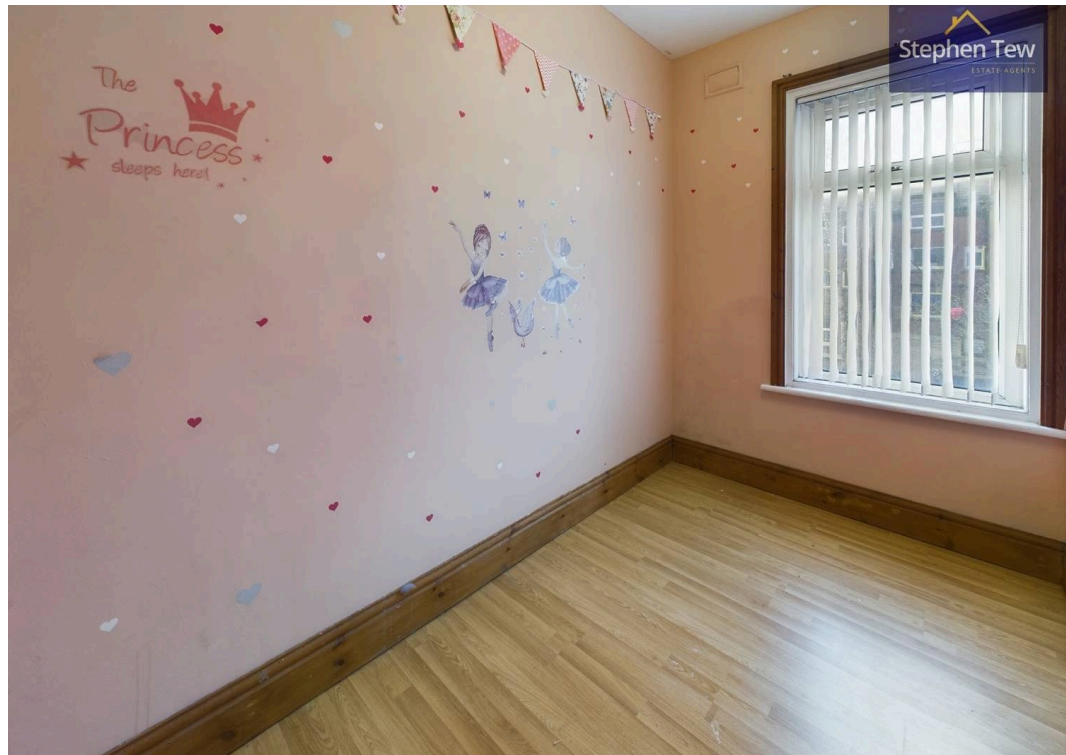
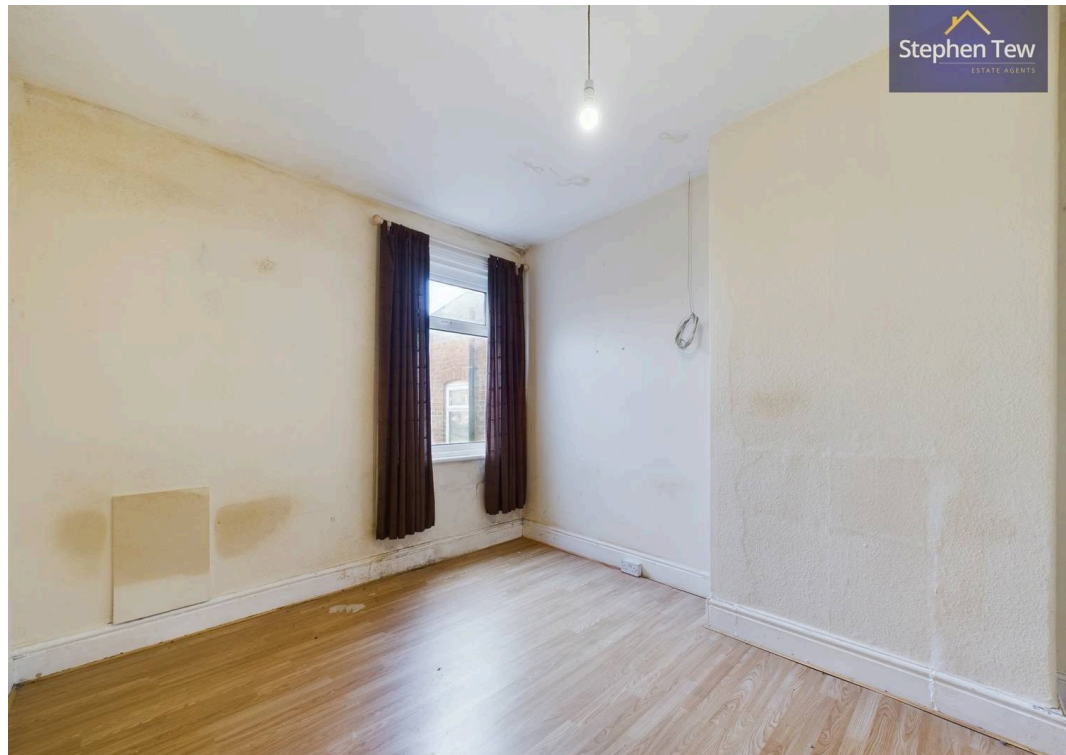
Bathroom

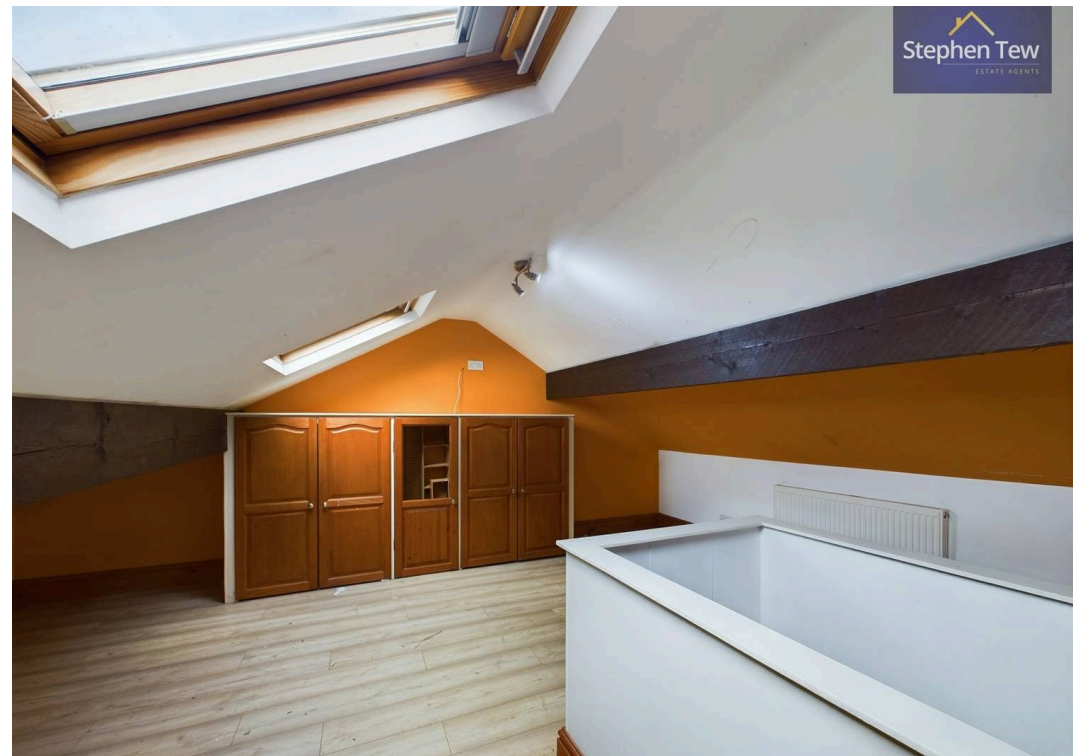
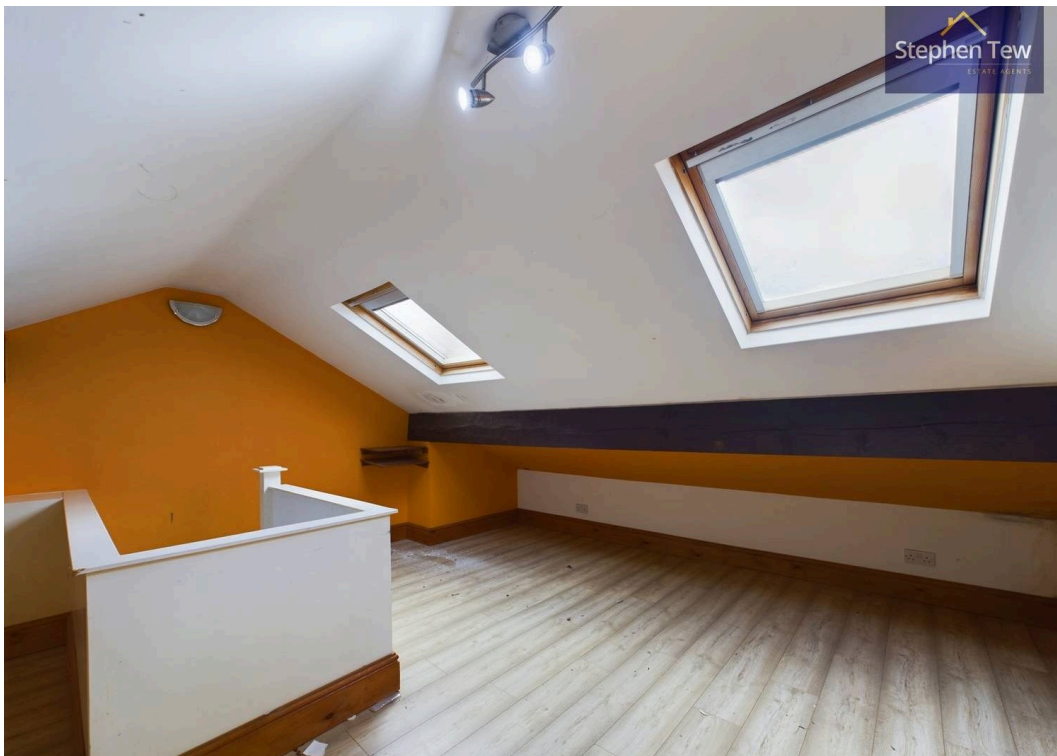
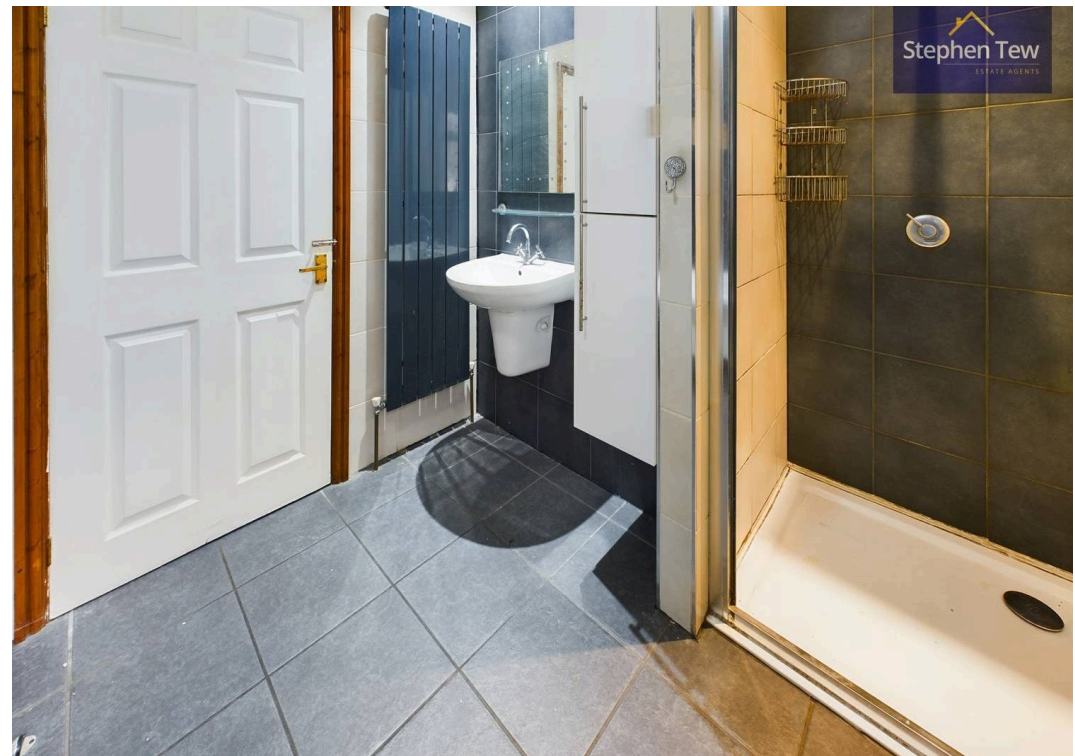
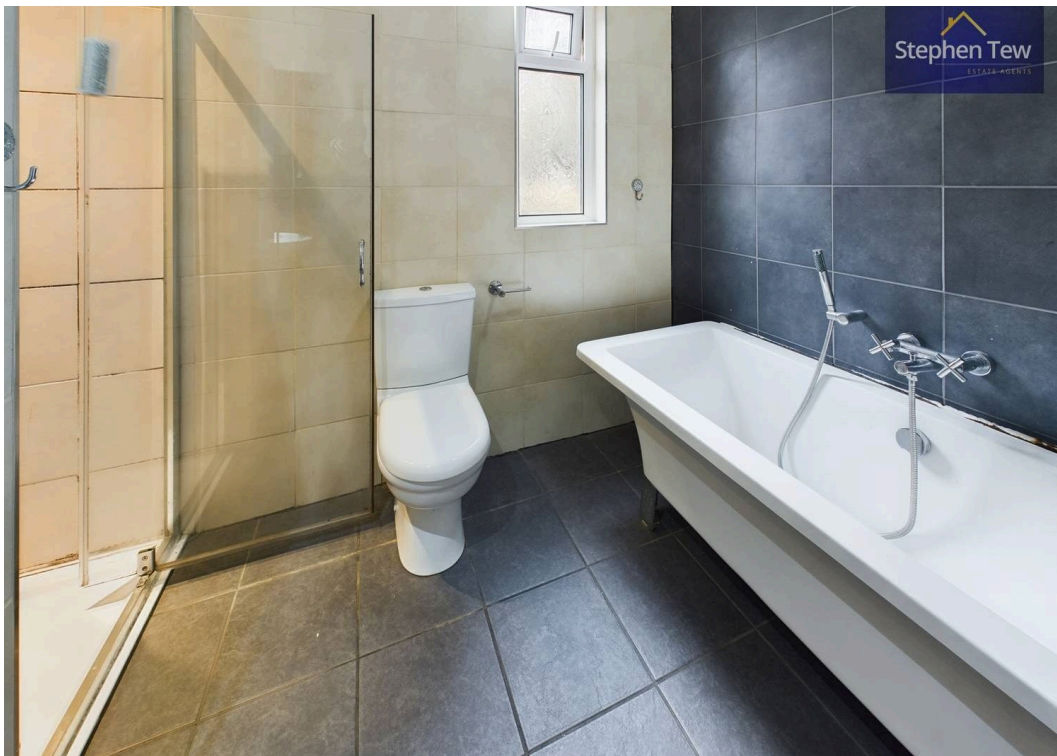
7' 10" x 7' 3" (2.38m x 2.20m)

Loft Room

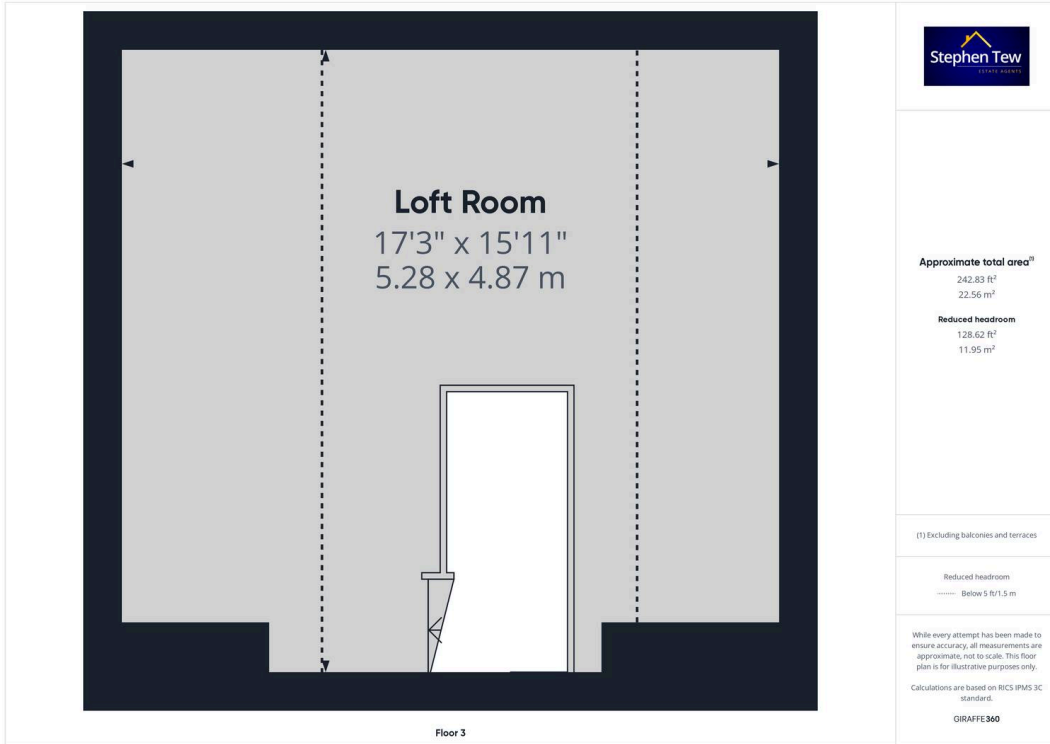
17' 4" x 16' 0" (5.28m x 4.87m)













Stephen Tew Estate Agents

Stephen Tew Estate Agents, 132 Highfield Road - FY4 2HH

01253 401111

info@stephentew.co.uk

www.stephentew.co.uk

