



Pine Crescent, Newholme Residential Park

Blackpool

Offers Over **£75,000**

Pine Crescent

Newholme Residential Park, Blackpool

Nestled within a tranquil setting, this well presented 1 bedroom park home offers a serene retreat for those seeking peaceful living. Situated within a private park home exclusively for over 50's, this property boasts a hallway, lounge, kitchen/diner, and a cosy bedroom complete with fitted wardrobes. The bathroom features a modern 3-piece suite for added comfort.

Step outside to discover the wonderful outdoor space this property has to offer. The wrap-around garden provides a delightful backdrop for al-fresco dining or simply basking in the sunshine. The residence is further enhanced with a convenient driveway. Don't miss the opportunity to make this delightful park home your own.

Council Tax band: A

Tenure: Freehold

- 1 Bedroom static caravan on a private Park Home
- Over 50's Only
- Hallway, Lounge, Kitchen/Diner, Bedroom with fitted wardrobes, 3 piece suite Bathroom with walk-in shower
- Wrap-around Garden, Driveway





Hallway

5' 7" x 2' 5" (1.70m x 0.73m)

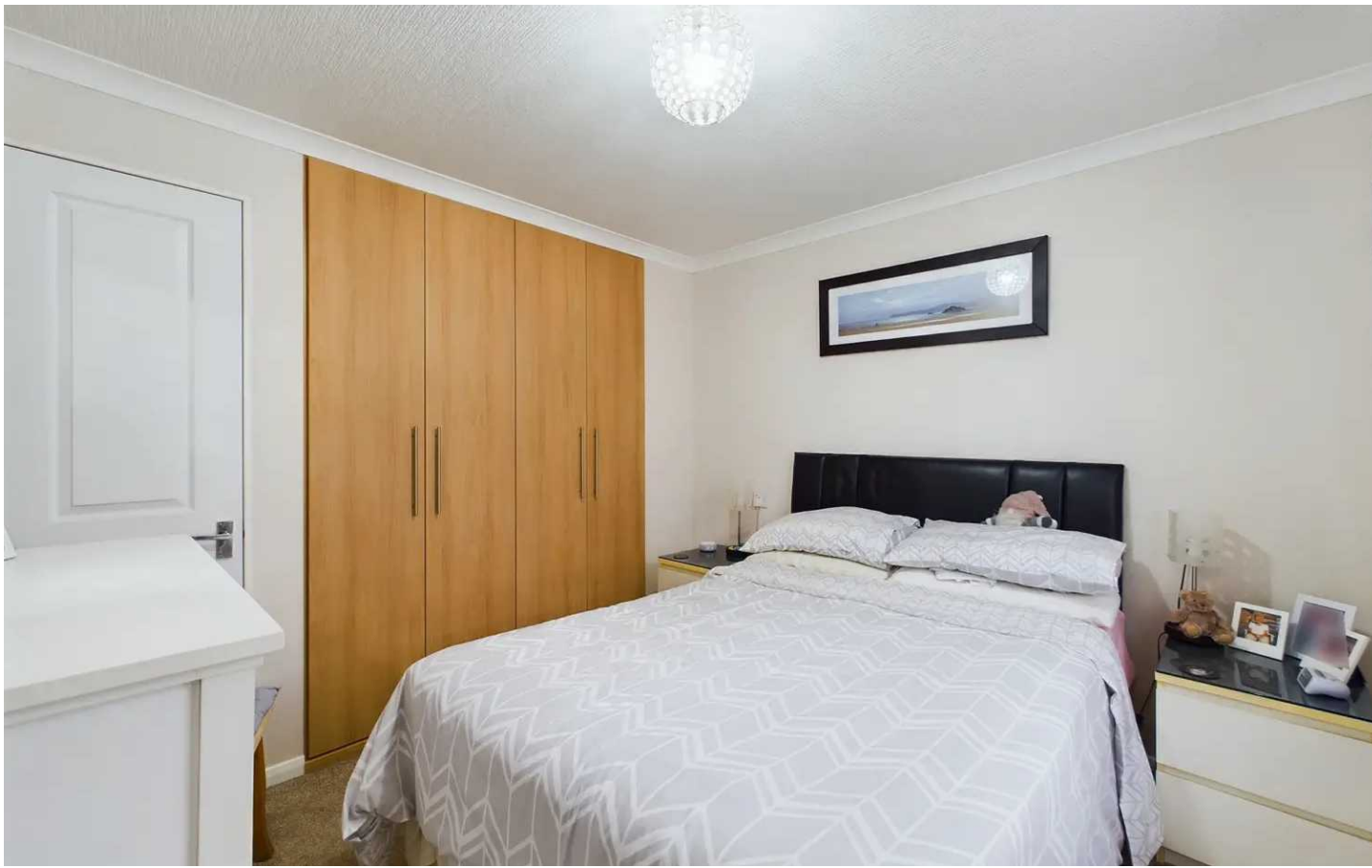
Lounge

12' 4" x 11' 2" (3.77m x 3.40m)

Kitchen/Diner

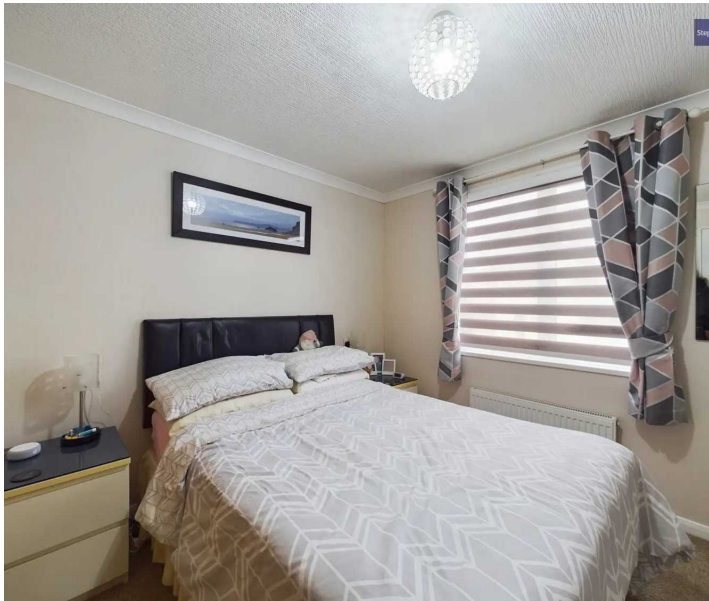
7' 5" x 11' 2" (2.27m x 3.41m)





Bedroom
9' 3" x 9' 3" (2.83m x 2.82m)

Bathroom
5' 7" x 8' 7" (1.71m x 2.62m)





GARDEN

Wrap around garden.

DRIVEWAY

1 Parking Space







Stephen Tew Estate Agents

Stephen Tew Estate Agents, 132 Highfield Road - FY4 2HH

01253 401111

info@stephentew.co.uk

www.stephentew.co.uk

