





ABOUT

Welcome to 21 Windsor Court | A spacious, bright one bedroom over 60's property on a quiet road within a short walk into the centre of Corbridge.

This property is accessed via a lift, or stairs with a range of communal areas, and includes lovely garden views.

Corbridge offers a wide variety of independent shops, restaurants, pubs and coffee houses, all of which can be enjoyed within a stones throw from the door.

Council Tax Band | A

EPC Rating | C

Services | Mains gas, electric, water and drainage

Tenure | Leasehold

PROPERTY FEATURES

Sitting Room | Kitchen

Double Bedroom | Bathroom

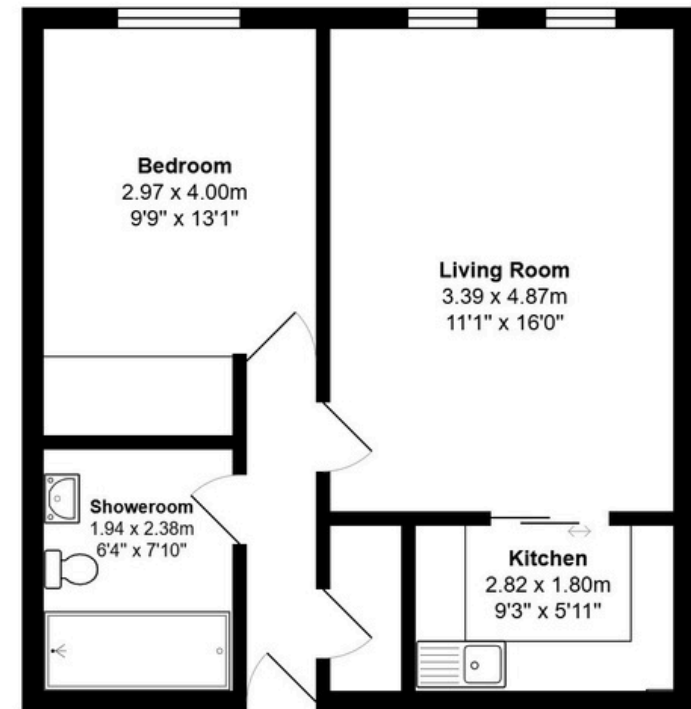
Communal Gardens | Visitor Bedroom | Warden | On-Site Parking





Floorplans

21, Windsor Court, Corbridge, NE45 5BN



Total Area: 50.7 m² ... 545 ft²

All measurements are approximate and for display purposes only




Location

Corbridge is one of the Tyne Valley's most desirable villages situated on the River Tyne and surrounded by beautiful countryside. With a range of local amenities including garage with express supermarket, post office, nursery, first and middle schools, village hall and thriving rugby, tennis and cricket clubs. Transport services include bus and rail links east and west with direct access onto major road routes (A68, A695 and A69), making this a perfect commuters location.

There are many beautiful country walks straight from your door to explore.



Property Address | 21 Windsor Court, Corbridge, NE45 5BN

 01434 632080

 19 Middle Street, Corbridge, NE45 5AT

 www.antonestates.co.uk

- These particulars do not form any part of any offer or contract.
- They are intended to give a fair description of the property, but neither Anton Estates nor the vendor accept any responsibility for any error they may contain, however caused. Any intending purchaser must therefore satisfy themselves by inspection or otherwise as to their correctness.
- Neither Anton Estates nor any of their employees has any authority to make or give any further representation or warranty in relation to this property.