





ABOUT

Welcome to The Forge | A beautiful stone-built barn conversion set within the South East Farm development, with a southerly aspect and finished to a high standard in the attractive village of Horsley.

The property oozes character throughout with exposed beams, a stone inglenook fireplace with a log burner, and arched windows. There are three bedrooms, an abundance of storage, a generous farmhouse style kitchen and a detached garage.

Council Tax Band | E

EPC Rating | D 59

Services | Mains electric, water and drainage. Oil-fired central heating

Tenure | Freehold

PROPERTY FEATURES

Entrance hallway | Dining Room | Kitchen Dining Room | Cloakroom |
Sitting Room

Principal Bedroom with En-Suite | Two further Double Bedrooms | Family
Bathroom | Three Storage Cupboards

Detached Garage | Driveway Parking | Patio | Front Garden









Outdoor Space

The Forge benefits from a beautifully sunny south facing front garden. The property is accessed from a block paved parking area to a winding flagged path up to the front door. Mainly laid to lawn with hedging to the west boundary providing some privacy. A stone flagged patio in front of the living room provides space for outside dining with a brilliantly scented lavender border.

A detached garage with boarded loft storage space sits to the front of the property with space to park in front.

Location

Horsley is a popular commuter village situated near the A69 surrounded by beautiful countryside. With a range of local amenities including a garage nearby with express supermarket, post office and first school only a short drive away at Heddon on the Wall, a village hall hosting various clubs, a cafe and a pub. A world class golf course home to Lee Westwood Golf is less than a mile away. Transport services include bus links east and west with direct access onto major road routes (A68, A695 and A69). Rail links are only a short drive away.



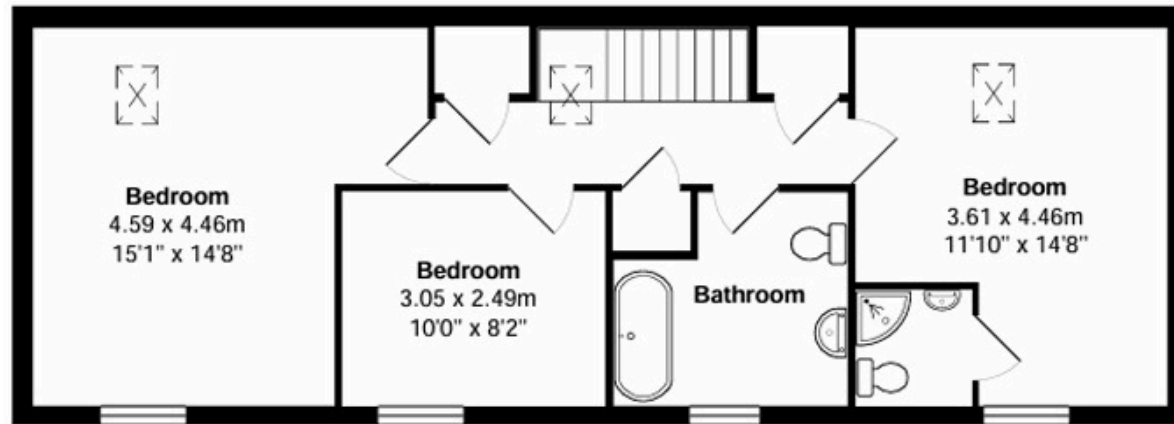
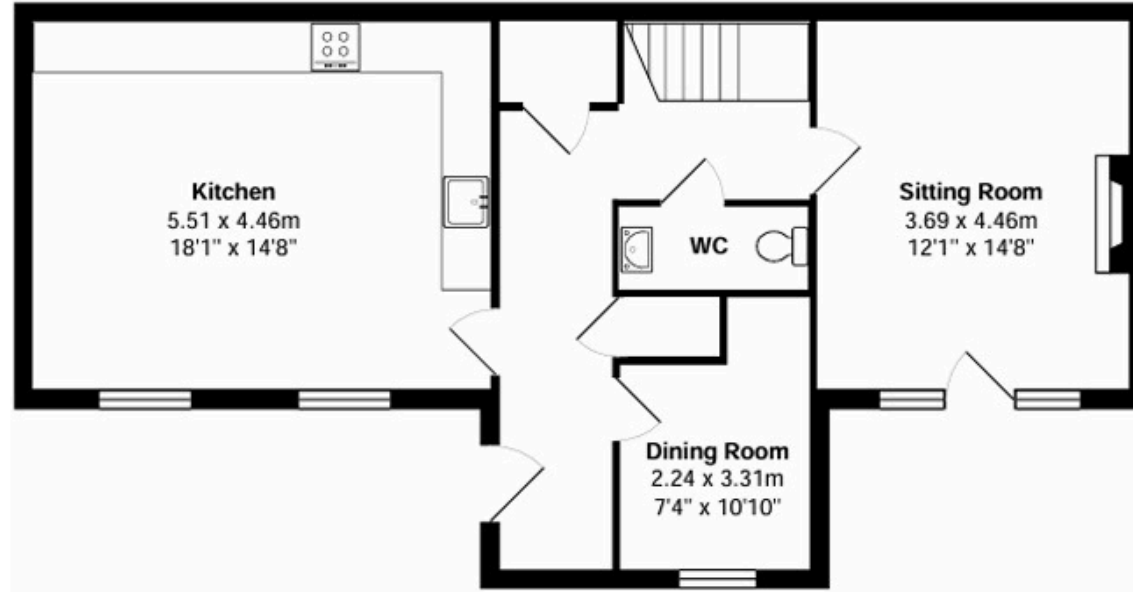


Floorplans

The Forge, 3, South East Farm, Horsley, NE15 0NT

Total Area: 122.1 m² ... 1314 ft²

All measurements are approximate and for display purposes only






For further enquiries and to book a viewing please contact our office on
t | 01434 632080
e | home@antonestates.co.uk





Full Address | The Forge, 3 South East Farm, Horsley NE15 0NT

What3words | defrost.palms.primed

 01434 632080

 19 Middle Street, Corbridge, NE45 5AT

 www.antonestates.co.uk

- These particulars do not form any part of any offer or contract.
- They are intended to give a fair description of the property, but neither Anton Estates nor the vendor accept any responsibility for any error they may contain, however caused. Any intending purchaser must therefore satisfy themselves by inspection or otherwise as to their correctness.
- Neither Anton Estates nor any of their employees has any authority to make or give any further representation or warranty in relation to this property.