





ABOUT

Welcome to Hill Furze | A unique art deco style detached property situated on a generous corner plot surrounded by mature gardens. Located within the exclusive Painshawfield Estate in Stocksfield, Hill Furze holds an elevated position near to New Ridley Road.

The property offers spacious and versatile accommodation throughout with views across the gardens. A striking balcony on the first floor providing the perfect spot to enjoy your evening tittle.

Council Tax Band | G

EPC Rating | D 66

Services | Mains gas, electric, water and drainage

Tenure | Freehold

PROPERTY FEATURES

Entrance hallway | Inner Hall | Living Room | Study Area | Kitchen | Dining Room | Garden Room | Drawing Room | WC

Principal Bedroom with en-suite | Guest bedroom with en-suite shower room | Two further bedrooms | Family Bathroom | Balcony

Double Garage | Glasshouse | Garden Shed | Outdoor WC











Outdoor Space

Hill Furze offers extensive mature gardens surrounding the property. A block-paved sweeping driveway leads up from the electric gates to the property with landscaped rock garden and ponds. Mature trees provide sheltered, shaded areas to the North with lawns extending from East to West to the rear. A beautifully sunny decking area provides an outdoor space to relax by the garden room. A kitchen garden to the East with vegetable boxes sit behind a modernised glasshouse.

A large garage with storage space sits beneath the property with space to park in front.

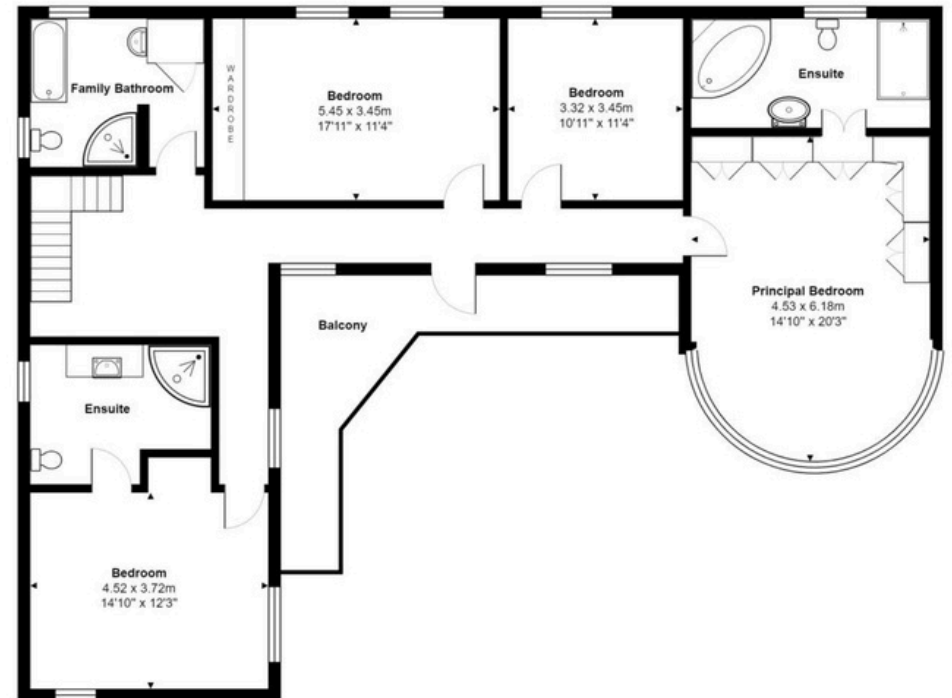
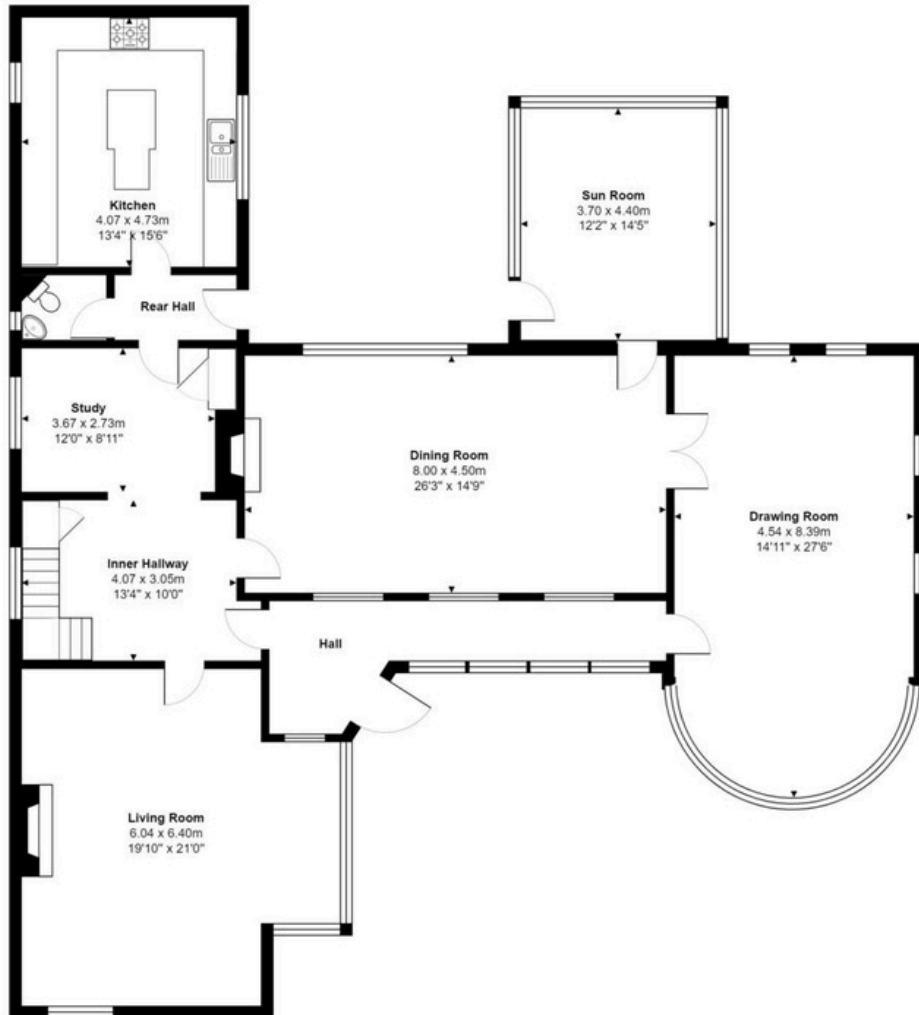
Location

Stocksfield is a popular commuter village situated on the south banks of the river Tyne surrounded by beautiful countryside. With a range of local amenities including a garage with express supermarket, post office, first school, village hall hosting various sports clubs, thriving tennis and cricket clubs and a play park. Transport services include bus and rail links east and west with direct access onto major road routes (A68, A695 and A69).

There are many beautiful country walks straight from your door to explore.



Floorplans








For further enquiries and to book a viewing please contact our office and speak to Bryony on |
t | 01434 632080
e | bryony.byron@antonestates.co.uk





 01434 632080

 19 Middle Street, Corbridge, NE45 5AT

 www.antonestates.co.uk

- These particulars do not form any part of any offer or contract.
- They are intended to give a fair description of the property, but neither Anton Estates nor the vendor accept any responsibility for any error they may contain, however caused. Any intending purchaser must therefore satisfy themselves by inspection or otherwise as to their correctness.
- Neither Anton Estates nor any of their employees has any authority to make or give any further representation or warranty in relation to this property.