

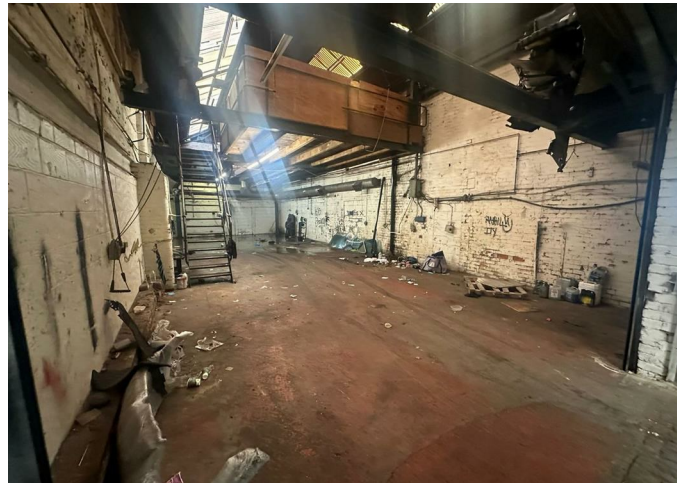
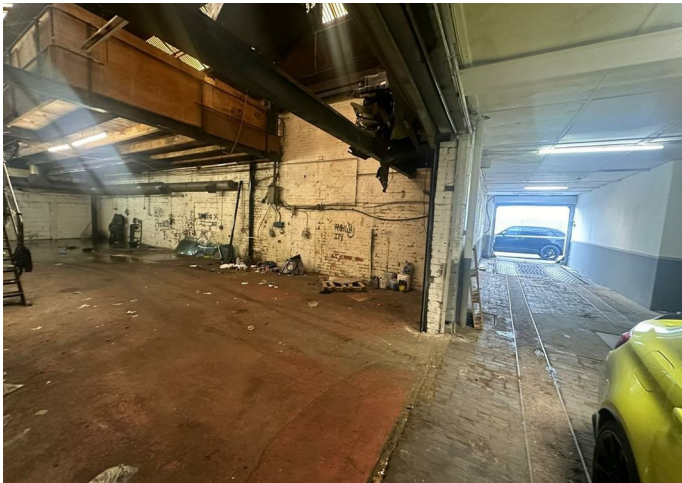
Commercial

# 1 ALMA STREET, SMETHWICK, B66 2RL

Per month

## £1,200 Per

FEATURES



 **Property**  
LOCAL

# 0 Bedroom Commercial located in Smethwick

Unit for rent on Alma Street, Smethwick for £1200 PCM. This spacious 64,099 sq ft unit is now available for rent, offering a vast open space that is perfect for storage or any business activities you have in mind. Situated over two floors, this property provides ample room for your operations.

Although currently undergoing slight refurbishments, this unit boasts shared access. . Contact Property local today to arrange a viewing and unlock the possibilities that this commercial space has to offer.

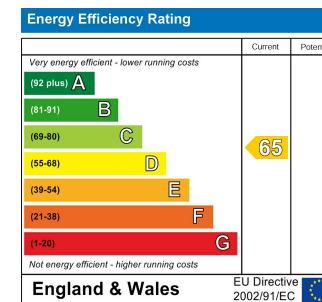
Call us on

01215 790355

propertylocal@hotmail.com

Council Tax Band

Exempt



Agents Note: Whilst every care has been taken to prepare these particulars, they are for guidance purposes only. All measurements are approximate and are for general guidance purposes only and whilst every care has been taken to ensure their accuracy, they should not be relied upon and potential buyers are advised to recheck the measurements.