

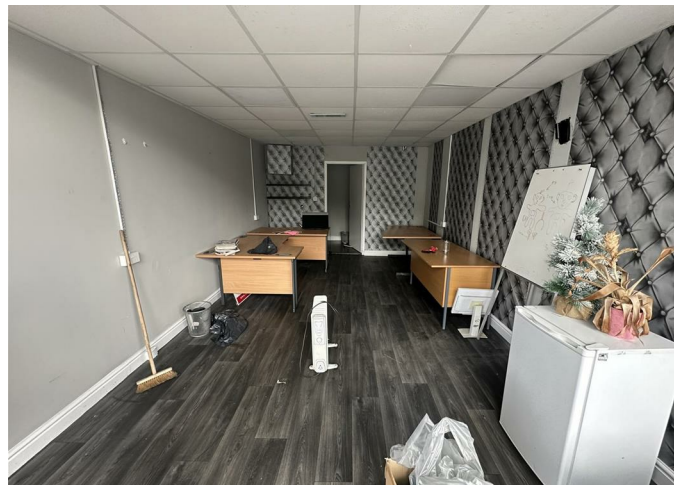


Commercial

5 ROLFE STREET,
BIRMINGHAM,
SMETHWICK, B66
2AA

£695

FEATURES



0 Bedroom Commercial located in Birmingham

Welcome to Rolfe Street, Birmingham - a prime location for your next commercial venture! This property offers a blank canvas with a generous amount of space, allowing you to let your imagination run wild in creating the perfect business space. Situated in the heart of Birmingham, this property is sure to attract a lot of foot traffic and attention. With endless possibilities and a fantastic location, this commercial property on Rolfe Street is an exciting opportunity not to be missed.


Call us on

01215 790355

propertylocal@hotmail.com

Council Tax Band

A

| Energy Efficiency Rating | | |
|--|----------------------------|---|
| | Current | Potential |
| <i>Very energy efficient - lower running costs</i> | | |
| (92 plus) A | | |
| (81-91) B | | |
| (69-80) C | | |
| (55-68) D | | |
| (39-54) E | | |
| (21-38) F | | |
| (1-20) G | | |
| <i>Not energy efficient - higher running costs</i> | | |
| England & Wales | EU Directive 2002/91/EC |  |

Agents Note: Whilst every care has been taken to prepare these particulars, they are for guidance purposes only. All measurements are approximate and are for general guidance purposes only and whilst every care has been taken to ensure their accuracy, they should not be relied upon and potential buyers are advised to recheck the measurements.