

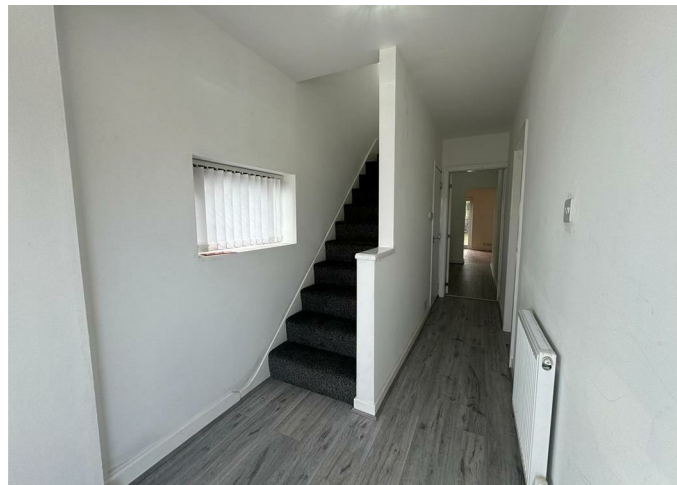


House

**59 HAWTHORN  
ROAD, SHELFIELD,  
WS4 1NT**

**£1,200**

FEATURES



**Property**  
LOCAL

# 3 Bedroom House located in Sheffield

Call us on

01215 790355

[propertylocal@hotmail.com](mailto:propertylocal@hotmail.com)

Property Local are proud to present this three bedroom semi detached property to let in a popular residential location in Walsall WS4.

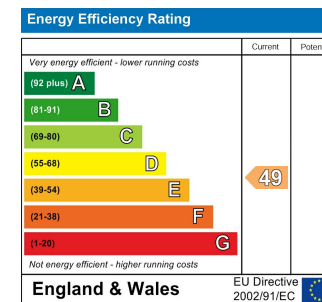
The property briefly comprises of entrance hall way, spacious lounge, kitchen/ dining area, utility, w/c, three double bedrooms, family bathroom, rear garden and spacious driveway.

The property benefits from double glazing and gas central heating.

EPC Rating: E

Council Tax Band

**B**



Agents Note: Whilst every care has been taken to prepare these particulars, they are for guidance purposes only. All measurements are approximate and are for general guidance purposes only and whilst every care has been taken to ensure their accuracy, they should not be relied upon and potential buyers are advised to recheck the measurements.

