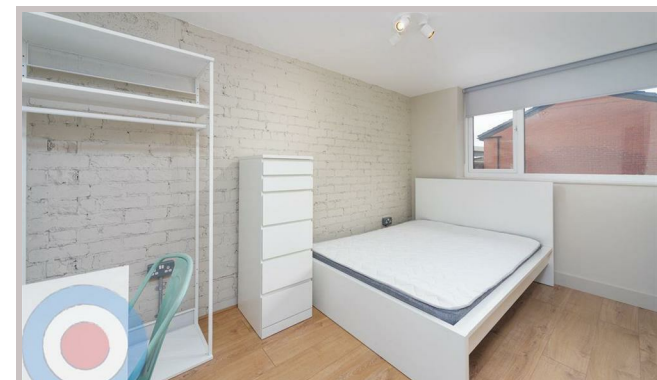




22 Ladybarn Lane
Manchester
M14 6WP



22 Ladybarn Lane

£801 Per month

Fantastic 8-Bedroom Student House in the Heart of Fallowfield

****BRAND NEW REFURBISHMENT, PICTURES COMING SOON****

Located just minutes from Wilmslow Road and Sainsbury's, this student house offers convenient city living with real wow factor. Featuring 8 double bedrooms and 3 bathrooms, including a stunning top-floor bathroom flooded with natural light and a freestanding bathtub, this property is perfect for students who love style and comfort.

The large open-plan living space boasts aluminium patio doors leading out to an Indian stone patio and wrap-around garden, ideal for socialising and relaxing. The sleek modern kitchen features quartz countertops and a large island, complemented by a spacious dining table for group meals. The cosy living area is perfect for movie nights and downtime.

Additional benefits include off-road parking, and tenancy is hassle-free with no deposit required, all bills included, and communal cleaning provided throughout the tenancy.

£801 pppcm
£185 pppw

- NO DEPOSIT
- ALL BILLS INCLUDED
- COMMUNAL CLEANING INCLUDED
- ALL DOUBLE BEDROOMS
- ENERGY EFFICIENT HOUSE C OR ABOVE
- MINUTES FROM WILMSLOW ROAD

Local Authority
Manchester City Council

Council Tax Band Exempt

EPC Rating C

Contact

01613992619

hello@welcometomanchesterlettings.com

www.welcometomanchesterlettings.com

