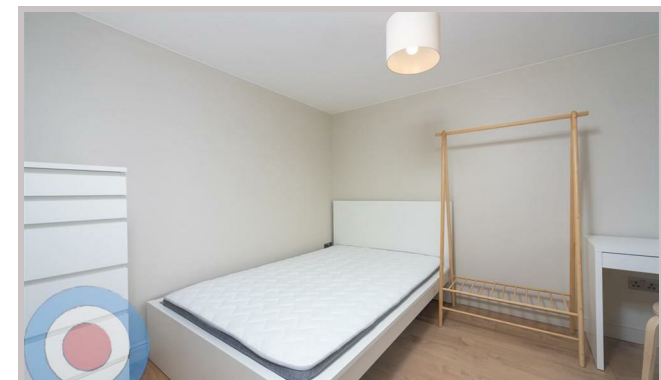




68 Haydn Avenue
Manchester
M14 4DE



68 Haydn Avenue

£780 Per month

STUDENT PROPERTY AVAILABLE ON 01/09/26

This stylish 6-bedroom semi-detached house is located in fashionable West Didsbury, just a short stroll to Burton Road with its many independent bars, cafes, and restaurants, and excellent transport links via buses and Metrolink to the city and universities.

The ground floor open-plan living space features a bespoke ply kitchen with quartz countertops and peninsula island, a dining area, and a living room with aluminium patio doors opening onto a mature garden with Indian stone patio.

There are three bathrooms, including a top-floor bathroom flooded with light featuring pink mosaic tiling and a freestanding bathtub. All six bedrooms are generous doubles and individually designed, offering style and personal space. Off-road parking is available for one car.

No deposit required, with all bills included and communal cleaning provided throughout the tenancy.

£180 pppw
£780 pppm

- NO DEPOSIT
- ALL BILLS INCLUDED
- COMMUNAL CLEANING INCLUDED
- ALL DOUBLE BEDROOMS
- ENERGY EFFICIENT HOUSE C OR ABOVE
- OFF ROAD PARKING

Local Authority
Manchester City Council

Council Tax Band Exempt

EPC Rating D

Contact

01613992619

hello@welcometomanchesterlettings.com

www.welcometomanchesterlettings.com

