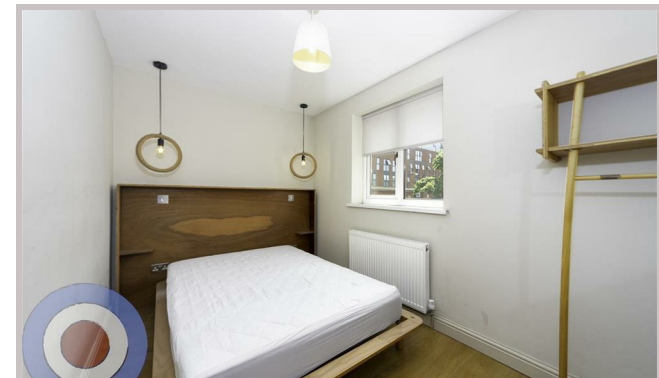
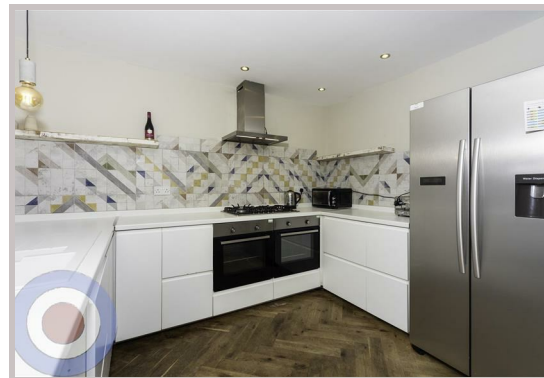




36 Redmere Grove
Manchester
M14 6ES



36 Redmere Grove

£801 Per month

STUDENT PROPERTY AVAILABLE ON 01/07/26

This beautiful 5-bedroom student house sits just seconds from Wilmslow Road in the heart of Fallowfield, putting shops, bars and transport links right on your doorstep.

Each bedroom comes with built-in bespoke ply furniture. The open-plan living space includes a sleek modern kitchen with a peninsula island and striking pink bar stools, a dining area and a cosy living room with a concrete feature wall.

Enjoy French solid oak parquet flooring throughout and aluminium patio doors opening onto an enclosed patio garden – perfect for relaxing or entertaining.

There are two bathrooms with concrete-effect tiles and reclaimed timber cladding.

Additional perks: no deposit, all bills included, and communal cleaning provided throughout the tenancy.

£185 pppw
£801.67 pppm

- NO DEPOSIT
- ALL BILLS INCLUDED
- COMMUNAL CLEANING INCLUDED
- ALL DOUBLE BEDROOMS
- ENERGY EFFICIENT HOUSE C OR ABOVE
- IN THE HEART OF FALLOWFIELD

Local Authority
Manchester

Council Tax Band Exempt

EPC Rating C

Contact

01613992619

hello@welcometomanchesterlettings.com

www.welcometomanchesterlettings.com

