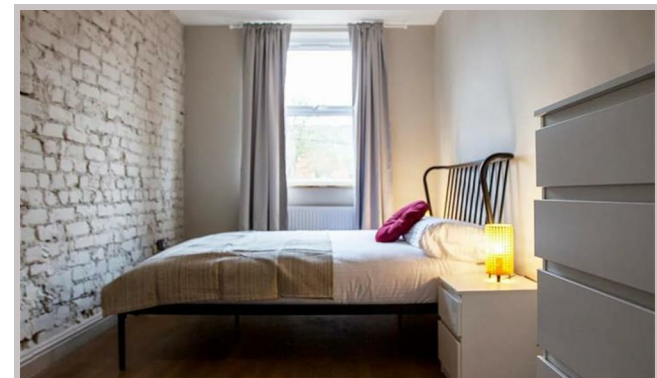
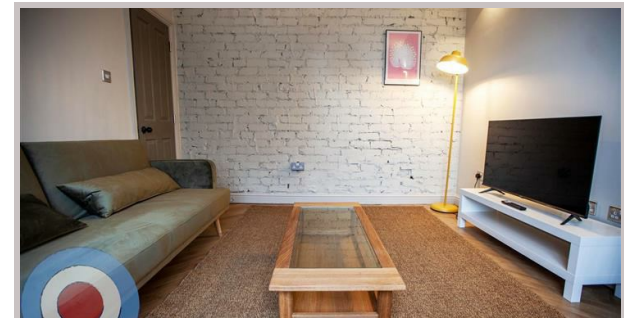




98 Monton Street
Manchester
M14 4LT



98 Monton Street

£801 Per month

STUDENT PROPERTY AVAILABLE ON 01/07/26

This stylish 6-bedroom, 3-storey end-terrace house is ideally located close to Whitworth Park and the universities, within walking distance of all local amenities.

The ground floor offers a fantastic open-plan living space featuring a bespoke hand-painted ply kitchen, a built-in dining area with wooden panelling and brass wall lights, and French solid oak flooring throughout. Patio doors lead out to a rear enclosed courtyard garden, perfect for relaxing or socialising.

There's also a separate lounge for extra space to unwind. All six bedrooms are generous doubles, and the property has two bathrooms, one with a bathtub.

Additional perks include no deposit, all utility bills included, and communal cleaning provided throughout the tenancy.

- NO DEPOSIT
- ALL BILLS INCLUDED
- COMMUNAL CLEANING INCLUDED
- ALL DOUBLE BEDROOMS
- ENERGY EFFICIENT HOUSE C OR ABOVE
- LOCATED NEAR WHITWORTH PARK

Local Authority
Manchester

Council Tax Band Exempt

EPC Rating C

Contact

01613992619

hello@welcometomanchesterlettings.com

www.welcometomanchesterlettings.com

