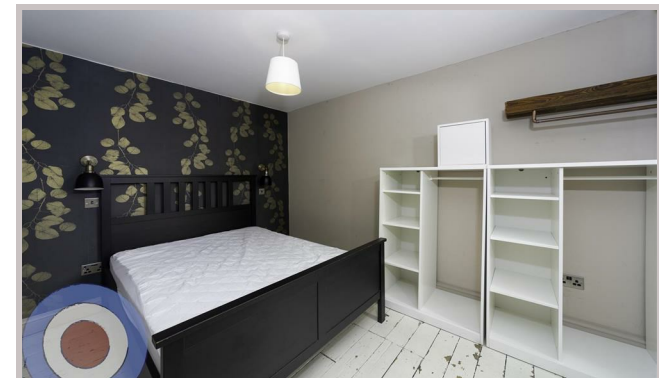




73 Ruskin Avenue
Manchester
M14 4DG



73 Ruskin Avenue

£758 Per month

STUDENT PROPERTY AVAILABLE ON 01/07/26

This stylish 6-bedroom, 3-storey house is perfectly located in Whitworth Park, just a short walk from the university. Packed with original features and individually styled bedrooms, all six bedrooms are generous doubles, ideal for student living.

The open-plan kitchen-diner provides a sociable hub, while the dining area features reclaimed church pews for a unique touch. Throughout the property you'll find exposed brickwork, reclaimed timber cladding, and other original details that add character and warmth.

No deposit required and communal cleaning included throughout your tenancy.

£175pppw

£758.33 ppm

- NO DEPOSIT
- ALL BILLS INCLUDED
- COMMUNAL CLEANING INCLUDED
- ALL DOUBLE BEDROOMS
- ENERGY EFFICIENT HOUSE C OR ABOVE
- LOCATED IN WHITWORTH PARK

Local Authority
Manchester

Council Tax Band Exempt

EPC Rating C

Contact

01613992619

hello@welcometomanchesterlettings.com

www.welcometomanchesterlettings.com

