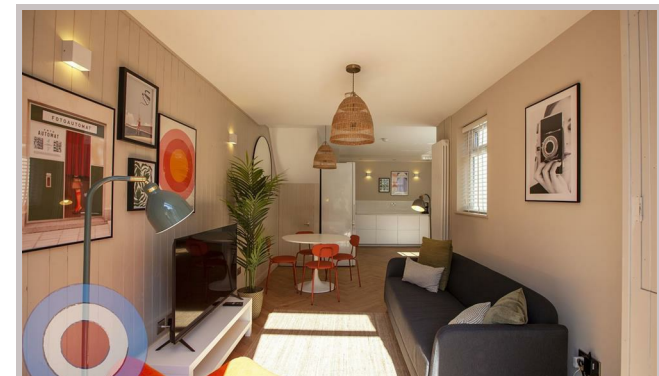




36 Haydn Avenue  
Manchester  
M14 4DL



# 36 Haydn Avenue

## £823 Per month

STUDENT PROPERTY AVAILABLE ON 01/07/26

This beautiful 7-bedroom student house in Whitworth Park is just a short walk from the university, with excellent access to the city and all local amenities. All seven bedrooms are spacious doubles, complemented by 2 modern bathrooms.

The ground floor boasts French solid oak parquet flooring, exposed brick, and timber cladding, creating a stylish and welcoming atmosphere. The contemporary kitchen features sleek quartz countertops, dining area and stylish living room that opens onto a private enclosed courtyard garden—perfect for socialising and relaxing.

Tenancy is hassle-free with no deposit required, all bills included, and communal cleaning provided throughout the tenancy.

£190 pppw  
£823.33 pppcm

- NO DEPOSIT
- ALL BILLS INCLUDED
- COMMUNAL CLEANING INCLUDED
- ALL DOUBLE BEDROOMS
- ENERGY EFFICIENT HOUSE C OR ABOVE
- SHORT WALK FROM THE UNIVERSITY

Local Authority  
Manchester

Council Tax Band Exempt

EPC Rating C

Contact

01613992619

hello@welcometomanchesterlettings.com

www.welcometomanchesterlettings.com

