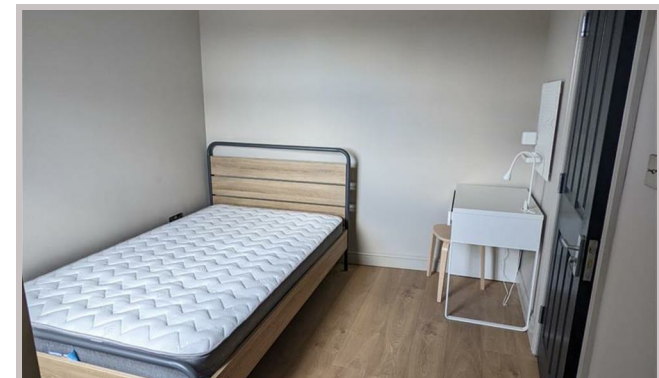




24 Carill Drive
Manchester
M14 6WR



24 Carill Drive

£823 Per month

STUDENT PROPERTY AVAILABLE ON 01/07/26

This stunning 7 bedroom, 2 bathroom student property is perfectly located just 2 minutes' walk from Sainsbury's and Wilmslow Road, right at the centre of Fallowfield's vibrant student scene.

Set over three spacious floors, the house features a fabulous open plan living area flooded with natural light and a modern fitted kitchen with patio doors opening directly onto a private courtyard garden, ideal for socialising and relaxing.

With generous bedrooms, contemporary décor, and all the essentials for comfortable student living, this home offers the perfect blend of style, space, and convenience.

£190 pppw
£823.33 pppm
NO DEPOSIT OR FEES

- NO DEPOSIT
- ALL BILLS INCLUDED
- COMMUNAL CLEANING INCLUDED
- ALL DOUBLE BEDROOMS
- ENERGY EFFICIENT HOUSE C OR ABOVE
- IN THE HEART OF FALLOWFIELD

Local Authority
Manchester

Council Tax Band Exempt

EPC Rating C

Contact

01613992619

hello@welcometomanchesterlettings.com

www.welcometomanchesterlettings.com

