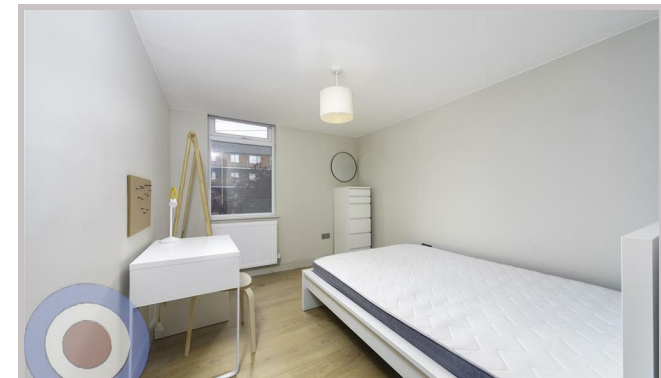
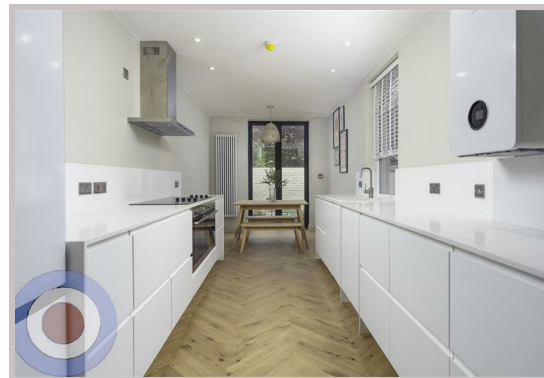
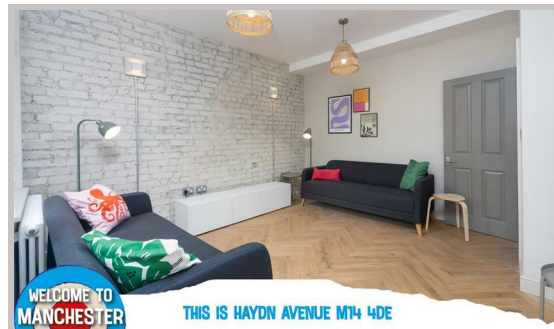




63 Haydn Avenue  
Manchester  
M14 4DE



# 63 Haydn Avenue

## £827 Per month

STUDENT PROPERTY AVAILABLE ON 01/07/26

This stunning 8-bedroom student house in Whitworth Park is just a short walk to the university, with easy access to the city and all local amenities. All eight bedrooms are doubles, with 2.5 bathrooms, including a fabulous top-floor bathroom flooded with natural light and a modern freestanding bathtub.

The ground floor features French solid oak parquet flooring, exposed brick, and timber cladding, creating a stylish and inviting space. The modern sleek kitchen comes with quartz countertops, while the dining area opens onto a private enclosed courtyard garden, perfect for socialising and relaxing.

No deposit required, with all bills included and communal cleaning provided throughout the tenancy.

- NO DEPOSIT
- ALL BILLS INCLUDED
- COMMUNAL CLEANING INCLUDED
- ALL DOUBLE BEDROOMS
- ENERGY EFFICIENT HOUSE C OR HIGHER
- LOCATED IN WHITWORTH PARK

Local Authority  
Manchester City Council

Council Tax Band Exempt

EPC Rating C

Contact

01613992619

hello@welcometomanchesterlettings.com

www.welcometomanchesterlettings.com

