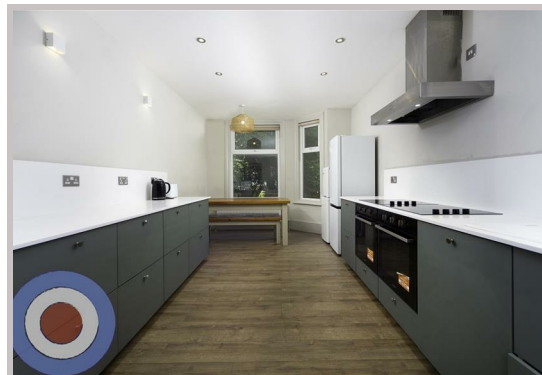




18 Beech Grove
Manchester
M14 6UY



18 Beech Grove

£793 Per month

STUDENT PROPERTY AVAILABLE ON 01/07/26

This spacious 8-bedroom, 3-storey house is ideally located in a popular Fallowfield area, perfect for students seeking space, comfort, and style.

The property features a modern kitchen-diner overlooking the rear garden and a separate living room with period features and high ceilings. All eight bedrooms are doubles, with two bathrooms, including one with a freestanding bathtub and terracotta tiling, blending character with contemporary style.

No deposit required and communal cleaning included throughout the tenancy.

£183 ppw
£767 ppm

- NO DEPOSIT
- ALL BILLS INCLUDED
- COMMUNAL CLEANING INCLUDED
- ALL DOUBLE BEDROOMS
- ENERGY EFFICIENT HOUSE C OR ABOVE
- LOCATED IN FALLOWFIELD

Local Authority
Manchester

Council Tax Band Exempt

EPC Rating C

Contact

01613992619

hello@welcometomanchesterlettings.com

www.welcometomanchesterlettings.com

