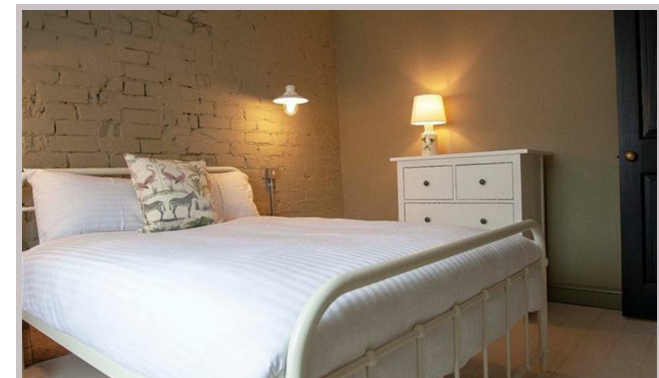
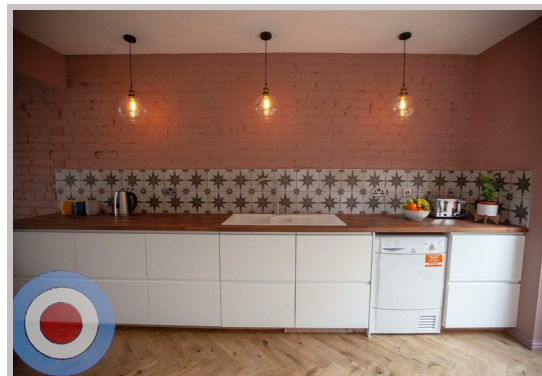




26 Lees Hall
Crescent
Manchester
M14 6XZ



26 Lees Hall Crescent

£814 Per month

STUDENT PROPERTY AVAILABLE ON 01/07/26

This spacious 8-bedroom, 3-storey house is in a popular location, just a 2-minute walk from Wilmslow Road and the Friendship Inn, placing shops, bars, and buses right on your doorstep.

The property features open-plan living with exposed brickwork and reclaimed timber cladding walls. The modern kitchen flows into a bright dining area overlooking the large garden, ideal for socialising and group meals. All eight bedrooms are doubles with two bathrooms, offering plenty of space for students.

No deposit required and communal cleaning included throughout your tenancy.

£188 pppw
£814.67 pppcm

- NO DEPOSIT
- ALL BILLS INCLUDED
- COMMUNAL CLEANING INCLUDED
- ALL DOUBLE BEDROOMS
- ENERGY EFFICIENT HOUSE C OR ABOVE
- POPULAR LOCATION

Local Authority
Manchester

Council Tax Band Exempt

EPC Rating

Contact

01613992619

hello@welcometomanchesterlettings.com

www.welcometomanchesterlettings.com

