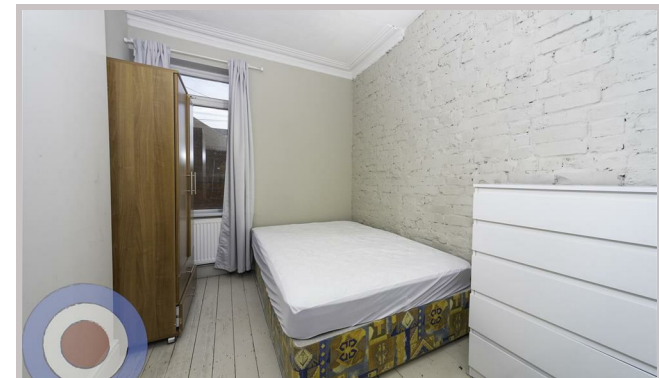




35 Booth Avenue  
Manchester  
M14 6RB



# 35 Booth Avenue

## £684 Per month

STUDENT PROPERTY AVAILABLE ON 01/07/26

This stylish 8-bedroom, 3-storey house is situated in a popular location, just a short walk from Wilmslow Road, putting shops, bars, and transport links on your doorstep.

The home features open-plan living with exposed brickwork and reclaimed timber cladding walls, creating a modern yet characterful space. All eight bedrooms are doubles, with three bathrooms, including a show-stopper on the top floor featuring wooden cladding and a freestanding bathtub.

No deposit required and communal cleaning included throughout your tenancy.

£158 pppw  
£684 pppm  
£178 pppw WITH BILLS INCLUDED

Local Authority  
Manchester

Council Tax Band Exempt

EPC Rating C

Contact

01613992619

hello@welcometomanchesterlettings.com

www.welcometomanchesterlettings.com

