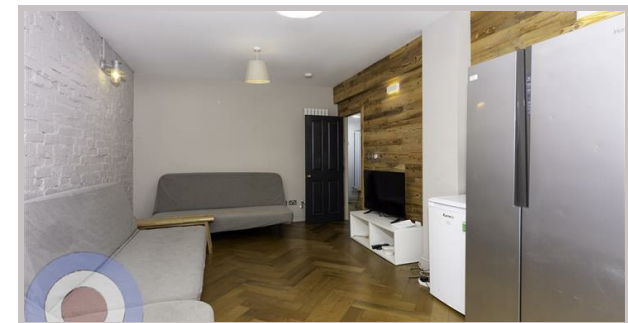




12 Lees Hall
Crescent
Manchester
M14 6XZ



12 Lees Hall Crescent

£832 Per month

STUDENT PROPERTY AVAILABLE ON 01/07/26

This spacious 9-bedroom house is perfect for student groups, offering open-plan living ideal for socialising and cooking with friends. Set over three storeys, all nine bedrooms are doubles and there are 2.5 bathrooms.

The property is packed with cool décor, including a tropical cloakroom on the ground floor. Patio doors lead out to a patio and large lawned garden, perfect for relaxing or entertaining.

Located just a 2-minute walk from Wilmslow Road and the popular Friendship Inn, you'll be close to shops, bars, and all student hotspots.

No deposit required and communal cleaning included throughout your tenancy.

£192 pppw
£836.33 ppm

- NO DEPOSIT
- ALL BILLS INCLUDED
- COMMUNAL CLEANING INCLUDED
- ALL DOUBLE BEDROOMS
- ENERGY EFFICIENT HOUSE C OR ABOVE
- HOTSPOT LOCATION

Local Authority
Manchester City Council

Council Tax Band Exempt

EPC Rating D

Contact

01613992619

hello@welcometomanchesterlettings.com

www.welcometomanchesterlettings.com

