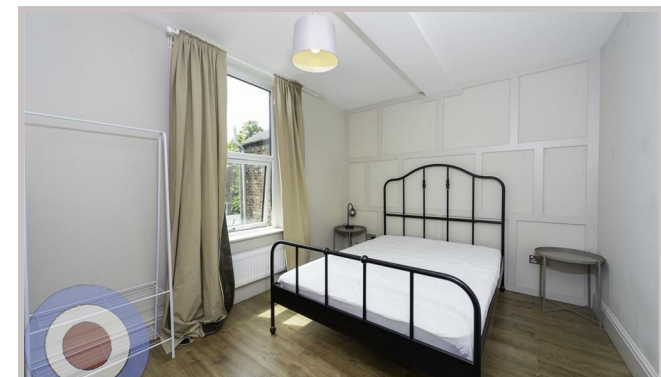




27 Mauldeth Road
West
Withington
M20 3EQ



27 Mauldeth Road West

£836 Per month

This huge 10-bedroom, 3-bathroom, four-storey period property is perfect for big groups who want to live together. Full of character and cool period features, it's just steps from Wilmslow Road, putting shops, cafés, and buses right on your doorstep.

The property features a stylish kitchen with quartz countertops, a dining room with unique terracotta flooring, and aluminium patio doors leading to a lovely garden with patio and lawn. Off-road parking adds extra convenience.

No deposit required. Communal area cleaning is included throughout your tenancy.

£836.33 pppm
£193.00 pppw

- NO DEPOSIT
- ALL BILLS INCLUDED
- COMMUNAL CLEANING INCLUDED
- ALL DOUBLE BEDROOMS
- ENERGY EFFICIENT HOUSE C OR ABOVE
- OFF ROAD PARKING

Local Authority
Manchester City Council

Council Tax Band Exempt

EPC Rating C

Contact

01613992619

hello@welcometomanchesterlettings.com

www.welcometomanchesterlettings.com

