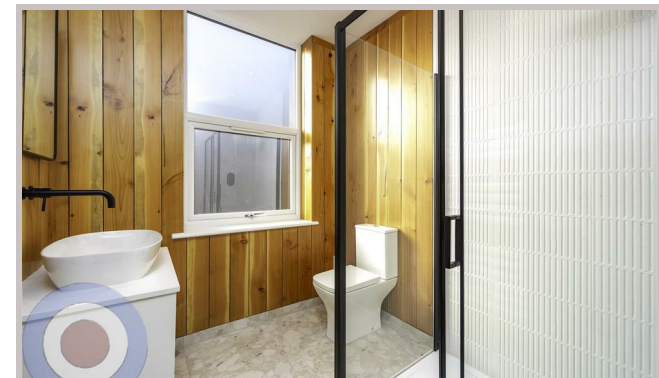




Flat 2, 14 Burlington
Road
Manchester
M20 4QA



Flat 2, 14 Burlington Road

£1,900 Per month

2 Bedroom Flat Available NOW
£1900 PCM

Located in the heart of vibrant Withington/Didsbury, this brand-newly renovated first-floor apartment combines timeless craftsmanship with contemporary design.

The property features a stunning open-plan living space, complete with a bespoke shaker-style kitchen finished with quartz countertops and a striking British Larch cladding feature wall. Floor-to-ceiling windows flood the space with natural light and offer beautiful views to the rear.

Throughout the apartment, French solid oak parquet flooring adds a sense of warmth and elegance, while the stylish bathroom is fully fitted with British Larch cladding for a sleek and modern finish.

Both bedrooms are generous doubles, offering flexibility for couples, professionals, or those in need of a home office or guest room.

This is a rare opportunity to secure a thoughtfully designed home in one of Manchester's most fashionable neighbourhoods, with an array of independent shops, cafés, restaurants, and excellent transport links right on your doorstep.

- 2 BEDROOMS
- 1 BATHROOM
- £1900PCM
- IN THE HEART OF WITHINGTON

Local Authority
Manchester city council

Council Tax Band A

EPC Rating C

Contact

01613992619

hello@welcometomanchesterlettings.com

www.welcometomanchesterlettings.com

