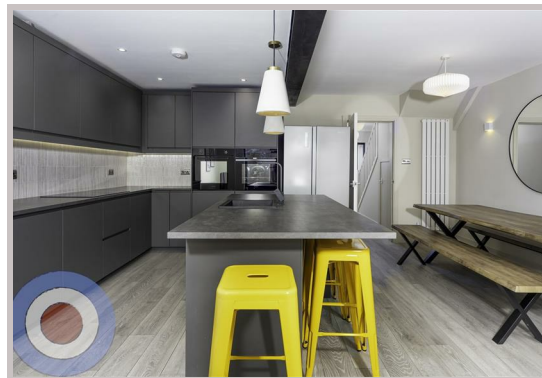
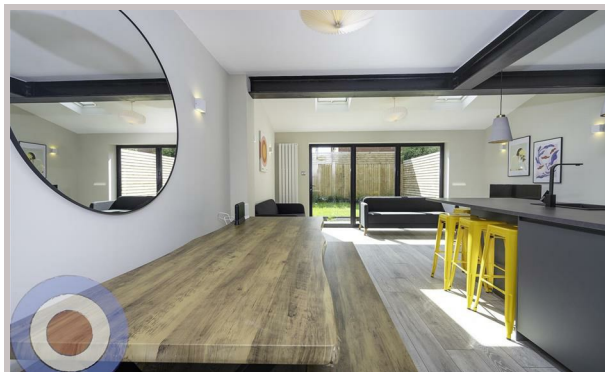
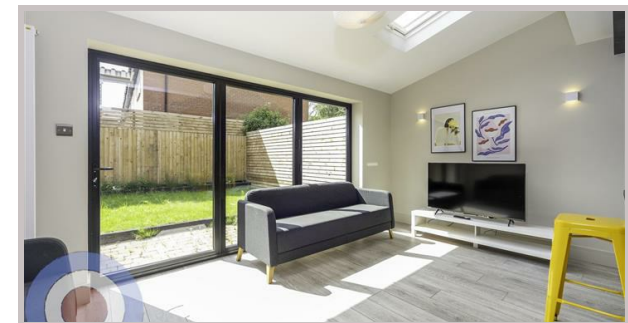




24 Ladybarn Lane
Manchester
M14 6WP



24 Ladybarn Lane

£814 Per month

STUDENT PROPERTY AVAILABLE ON 01/07/26

This 7-bedroom, 3-storey student house is perfectly located in the heart of Fallowfield, just minutes' walk from Wilmslow Road, Sainsbury's, and the popular Friendship Inn.

The property features a sleek modern kitchen with island and cool yellow bar stools, a large dining table with benches so everyone can eat together, and bifold doors leading to a private patio and lawned garden – perfect for socialising. All seven bedrooms are doubles, with two stylish bathrooms featuring terrazzo tiling and wooden panelling.

Additional benefits include off-road parking, no deposit, and communal cleaning included throughout the tenancy.

- NO DEPOSIT
- ALL BILLS INCLUDED
- COMMUNAL CLEANING INCLUDED
- ALL DOUBLE BEDROOMS
- ENERGY EFFICIENT HOUSE C OR ABOVE
- LOCATED IN THE HEART OF FALLOWFIELD

Local Authority
Manchester City Council

Council Tax Band Exempt

EPC Rating D

Contact

01613992619

hello@welcometomanchesterlettings.com

www.welcometomanchesterlettings.com

