



**Westgate Bay Avenue, Westgate-on-sea, CT8 8AH**

**5 Bed Terraced**

**EPC: D**

**Council Tax: D**

**GUIDE PRICE: £675,000-£700,000**

**FOOTPRINTS**  
exp uk







- Handsome five-bedroom Victorian home in the Westgate-on-Sea Conservation Area
- Spacious bay-fronted living room with original fireplace
- Elegant dining room opening directly onto the garden
- Basement level with versatile rooms (playroom, music room, storage)
- Principal bedroom with Victorian fireplace, en suite, and walk-in wardrobe
- Sea glimpses from top-floor bedrooms
- Private rear garden with patio, mature planting, raised beds and wisteria
- Moments from Blue Flag beaches at St Mildred's Bay and Minnis Bay
- Excellent local cafés, restaurants and artisan shops nearby.
- Fast train services to London St Pancras (approx. 90 mins)

This handsome five-bedroom home lies in the heart of the Westgate-on-Sea Conservation Area, just minutes from sandy Blue Flag beaches and fast rail links to London St Pancras. Its striking Dutch-gabled red-brick façade and decorative stone dressings give it real presence, while inside, vibrant interiors complement a wealth of original Victorian features.

Once home to celebrated artist Louis Wain, famed for his whimsical cat illustrations, the house combines history with modern family living.

The ground floor flows seamlessly from a bay-fronted living room with a period fireplace, to a generous dining room that opens to the garden, and a bright kitchen with colourful cabinetry and sliding doors onto the patio. A basement level offers versatile extra living space, currently a playroom and music room.

Upstairs, the principal bedroom has a Victorian fireplace and a striking en suite with central bathtub, rain shower and walk-in wardrobe. Four further bedrooms and two additional bathrooms provide ample family accommodation, with sea glimpses from the top floor.

The rear garden is a private retreat, with a large patio, mature planting, raised beds, and fragrant wisteria. Perfect for entertaining or quiet relaxation.

Westgate-on-Sea offers an enviable coastal lifestyle, with sandy bays, artisan cafés and restaurants on the doorstep. Nearby Margate adds a thriving cultural scene, from the Turner Contemporary to acclaimed dining. Excellent transport links make this both a wonderful seaside retreat and a practical London escape.

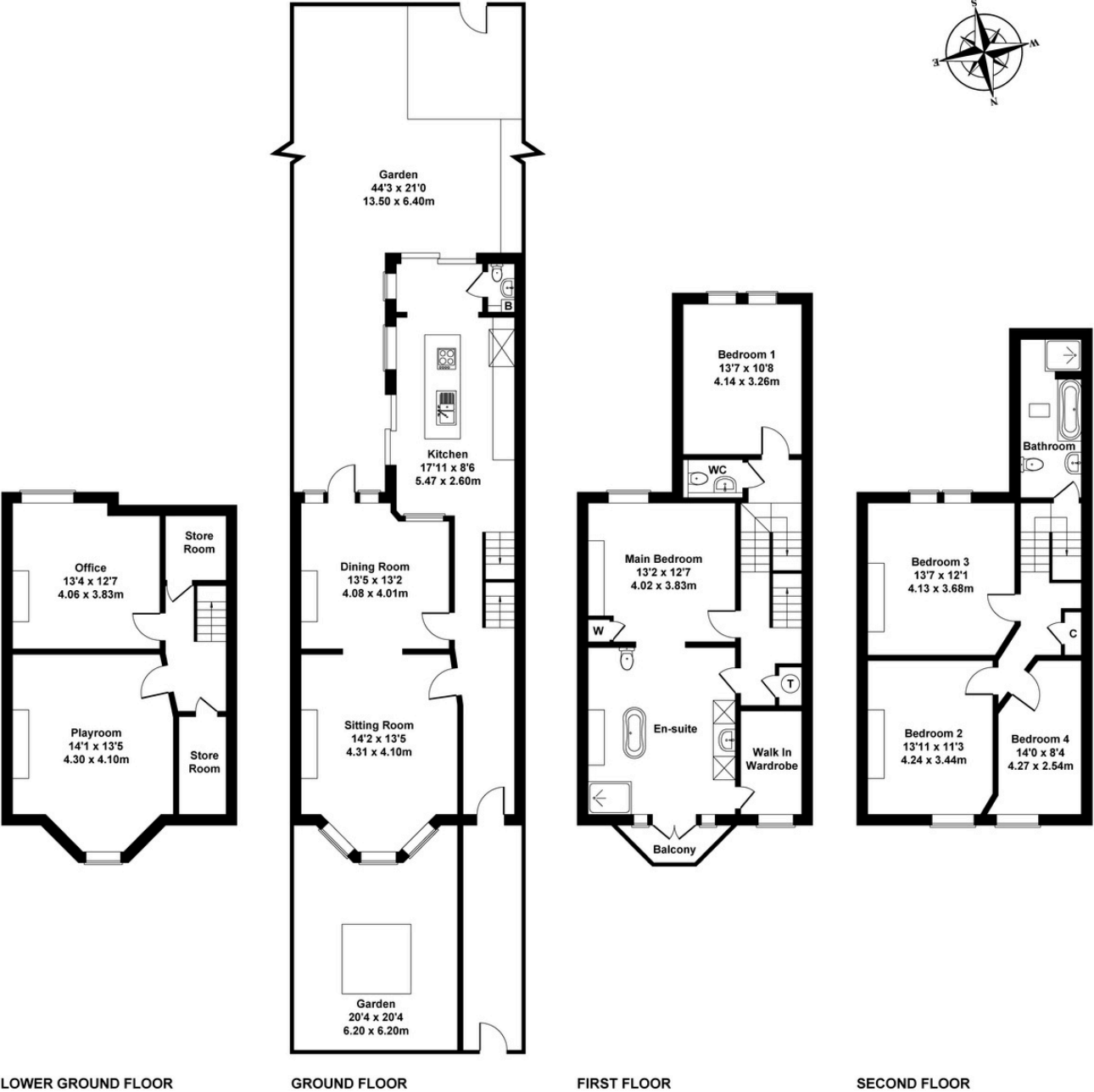






29 Westgate Bay Avenue, Westgate-On-Sea, CT8 8A

Approximate Gross Internal Area  
2713 sq ft - 252 sq m









For Further Information Please Contact Jake:

jake@footprintsproperty.co.uk

07889365800

jakesauvage.exp.com

FOOTPRINTS

POWERED BY  
exp<sup>®</sup> UK