



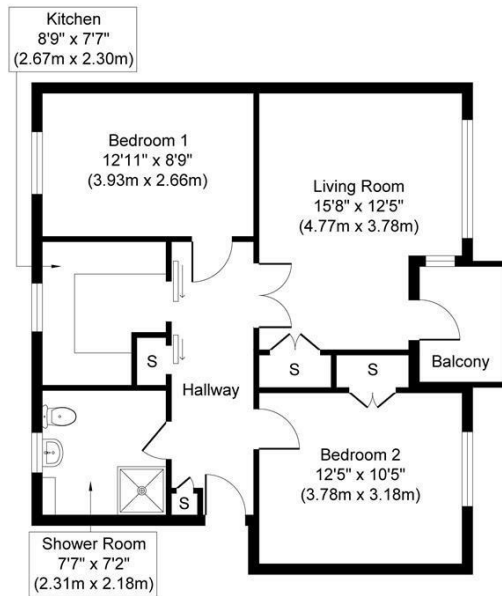
FLAT 8, ROGERS HOUSE RUSHOLME AVENUE

DAGENHAM, RM10 7PB

£225,000
LEASEHOLD

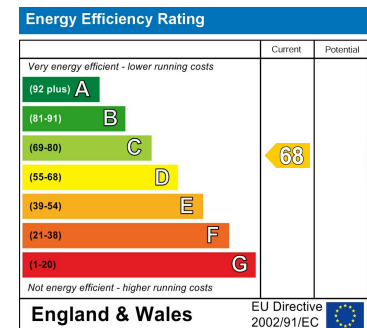
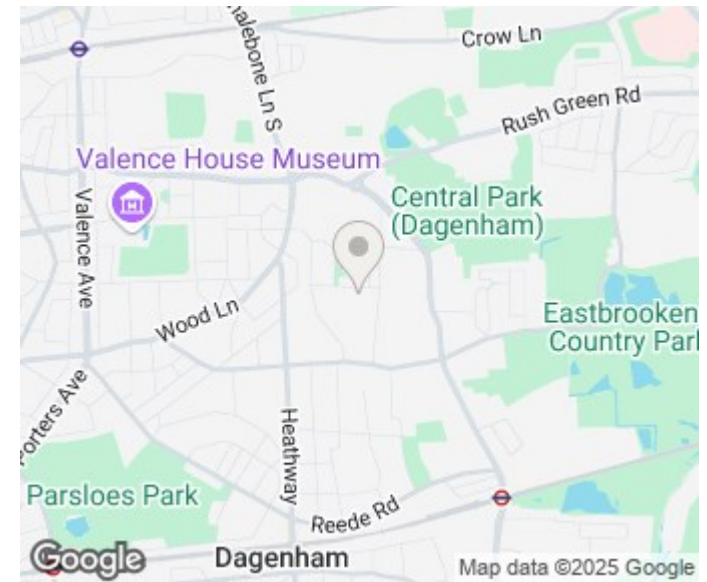
This beautifully presented two-bedroom ground floor flat offers generous living space, a private balcony, and a smart, practical layout, making it ideal for first-time buyers, families, or investors. Situated on a peaceful residential street in Dagenham, it's perfectly placed for everyday convenience with excellent transport links—just a short distance from Dagenham East and Heathway stations—and a wide range of local amenities including shops, schools, parks, and leisure facilities. This home combines comfort, value, and a superb location in one attractive package.


BELLS
ESTATE AGENT



Approximate Floor Area
669 sq. ft
(62.13 sq. m)

Whilst every attempt has been made to ensure the accuracy of the floor plan contained here, measurements of doors, windows, rooms and any other items are approximate and no responsibility is taken for any error, omission, or mis-statement. The measurements should not be relied upon for valuation, transaction and/or funding purposes. This plan is for illustrative purposes only and should be used as such by any prospective purchaser or tenant. The services, systems and appliances shown have not been tested and no guarantee as to their operability or efficiency can be given.
Copyright V360 Ltd 2025 | www.houseviz.com



Agents Note: Whilst every care has been taken to prepare these particulars, they are for guidance purposes only. All measurements are approximate and are for general guidance purposes only and whilst every care has been taken to ensure their accuracy, they should not be relied upon and potential buyers/tenants are advised to recheck the measurements

Bells Estate Agent Limited
The Whitechapel Centre 85 Myrdle
Street
London
Greater London
E1 1HL

02071128120
budruljamal@bellsestateagent.co.uk
<https://www.bellsestateagent.co.uk/default.aspx>

BELLS
ESTATE AGENT