



17 THORPE ROAD

LONDON, E6 2HS

£450,000
FREEHOLD

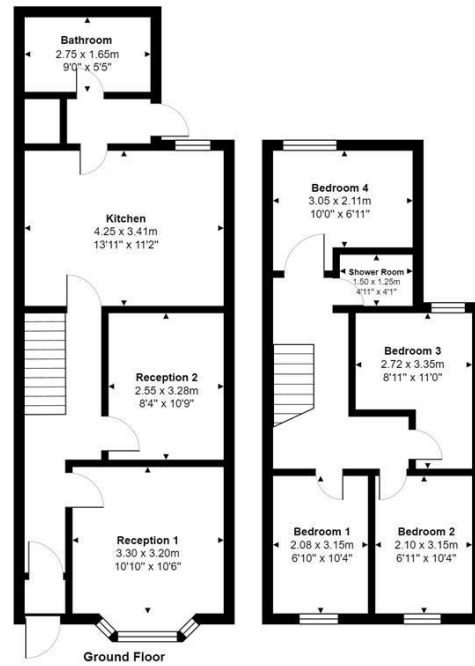
Welcome to this charming property located on Thorpe Road in the heart of East Ham. This mid-terrace house boasts two reception rooms, perfect for entertaining guests or simply relaxing with your loved ones. With four spacious bedrooms, there is plenty of room for the whole family to enjoy.

The property features two bathrooms, ensuring convenience and comfort for all residents. Spanning across 1,356 sq ft, this house offers ample space for you to create your dream home. Whether you're looking to invest or settle down, this property presents a fantastic opportunity in a prime location.

Situated in one of London's most sought-after areas, this property is surrounded by an array of amenities, including shops, restaurants, and excellent transport links. Don't miss out on the chance to own a piece of this vibrant and dynamic city. Contact us today to arrange a viewing and make this house your new home!


BELLS
ESTATE AGENT

Thorpe Road, East Ham, London, E6 2HS



Total Area: 92.0 m² ... 990 ft²

While every effort has been made to ensure the accuracy of this floor plan, the measurements of doors, windows, rooms, and other elements are approximate. We cannot be held responsible for any errors, omissions, or inaccuracies. This floor plan is for illustrative purposes only and should be used as such by prospective buyers. The services, systems, and appliances depicted have not been tested, and no guarantee of their functionality or efficiency is provided.
This floor plan was prepared by Moovrhome.co.uk



Energy Efficiency Rating		
	Current	Potential
Very energy efficient - lower running costs		
(92 plus) A		
(81-91) B		
(69-80) C		
(55-68) D		
(39-54) E		
(21-38) F		
(1-20) G		
Not energy efficient - higher running costs		
England & Wales	EU Directive 2002/91/EC	

Agents Note: Whilst every care has been taken to prepare these particulars, they are for guidance purposes only. All measurements are approximate and are for general guidance purposes only and whilst every care has been taken to ensure their accuracy, they should not be relied upon and potential buyers/tenants are advised to recheck the measurements

Bells Estate Agent Limited
The Whitechapel Centre 85 Myrdle Street
London
Greater London
E1 1HL

02071128120
budruljamal@bellsestateagent.co.uk
<https://www.bellsestateagent.co.uk/default.aspx>

