

Thompson Estates

Thompson Estates
163 Stamford Street Central
Ashton-Under-Lyne
OL6 6XW

0161 399 1630
info@thompson.co.uk

LETTINGS AND SALES



Apt 1, 135 Stamford Street Central

Thompson Estates are delighted to launch this newly renovated 2 bedroom apartment located at The Dress Factory on Stamford Street Central in the heart of Ashton-Under-Lyne. This property offers a delightful blend of modern living and convenience, making it an ideal choice for those seeking a vibrant town centre lifestyle.

The apartment is situated on the first floor & shares a common area with 5 others each offering spacious contemporary accommodation. The area surrounding this premises is vibrant and bustling, with local amenities such as eateries, bars and shops.

Once inside you will find a carefully thought out open plan lounge and kitchen offering all modern fittings / appliances, a spacious shower room and two double bedrooms.

Ashton-under-Lyne offers excellent commuter links via train, tram and the motorway meaning this property gives access to Manchester city centre within 14 minutes.

With the exciting option to have the apartment part furnished for an additional £150 pcm or create your own home

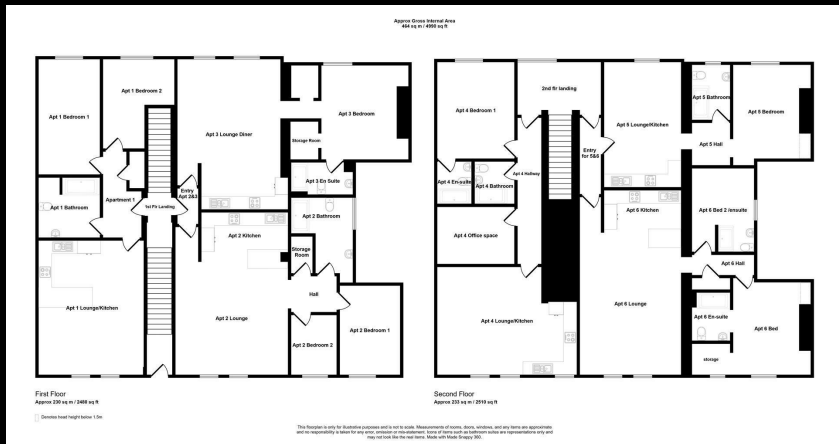
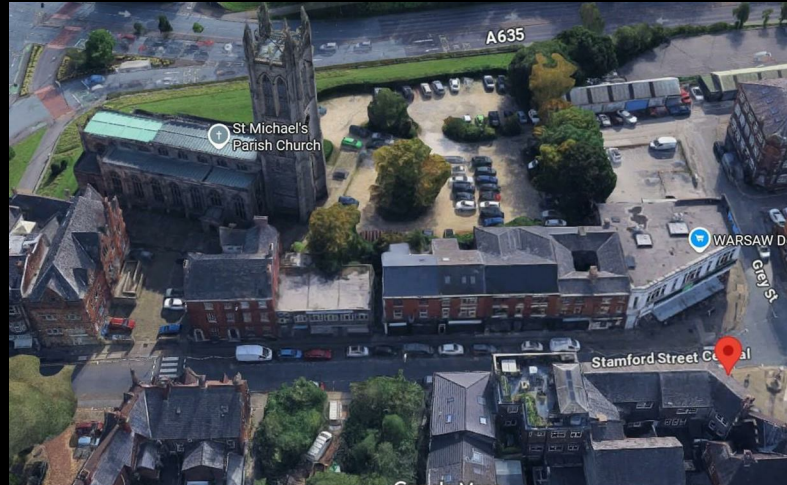
CHECK OUT THE VIRTUAL TOUR

VIEWINGS ARE STRICTLY BY THE AGENT

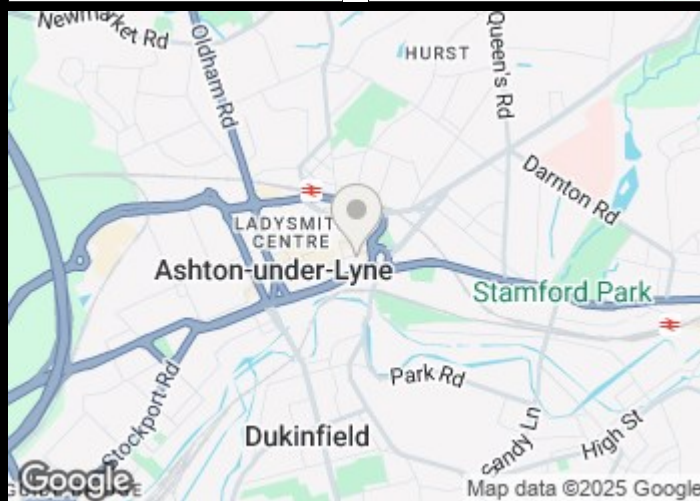
- House
- Bedrooms- 2
- Bathrooms- 1
- Receptions- 0
- EPC- D

Per month

£1,150



Energy Efficiency Rating		Environmental Impact (CO ₂) Rating	
Current	Potential	Current	Potential
Very energy efficient - lower running costs		Very environmentally friendly - lower CO ₂ emissions	
(92 plus) A		(92 plus) A	
(81-91) B		(81-91) B	
(69-80) C		(69-80) C	
(55-68) D		(55-68) D	
(39-54) E		(39-54) E	
(21-38) F		(21-38) F	
(1-20) G		(1-20) G	
Not energy efficient - higher running costs		Not environmentally friendly - higher CO ₂ emissions	
England & Wales		England & Wales	
EU Directive 2002/91/EC		EU Directive 2002/91/EC	



Thompson Estates
163 Stamford Street Central
Ashton-Under-Lyne
OL6 6XW
0161 399 1630
info@thompstonea.co.uk

These particulars, whilst believed to be accurate are set out as a general outline only for guidance and do not constitute any part of an offer or contract. Intending purchasers should not rely on them as statements of representation of fact, but must satisfy themselves by inspection or otherwise as to their accuracy. No person in this firms employment has the authority to make or give any representation or warranty in respect of the property.