

# Thompson Estates

LETTINGS AND SALES

Thompson Estates  
163 Stamford Street Central  
Ashton-Under-Lyne  
OL6 6XW

0161 399 1630  
info@thompstonea.co.uk



## Apt 2, 135 Stamford Street Central

Thompson Estates are delighted to bring to market, this Two bedroom apartment with modern stylish living in the heart of Ashton Town Centre.

The apartment a brand new conversion and shares a common area with 6 others each offering spacious contemporary living.

On entry you are greeted by an open plan lounge kitchen, containing modern sleek fittings, the bedroom offers a space for king sized bed and ample storage. Leading to the bathroom which is fitted with a double shower that has both a power shower and rainfall shower.

The area surrounding this premises is vibrant and bustling, with local amenities such as eateries, bars and shops.

Ashton-Under-Lyne offers excellent commuter links via train, tram and the motorway meaning this property gives access to Manchester city centre within 14 minutes.

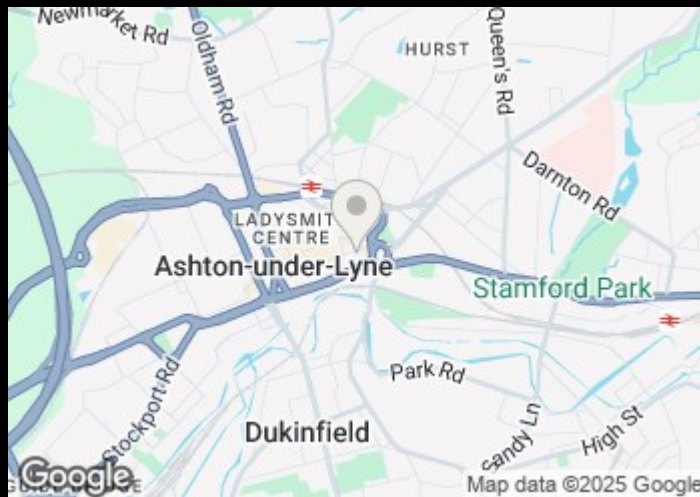
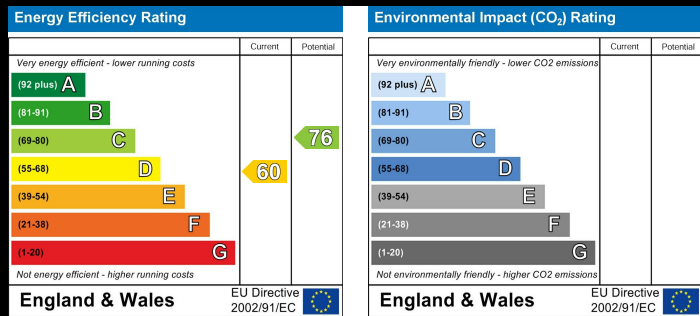
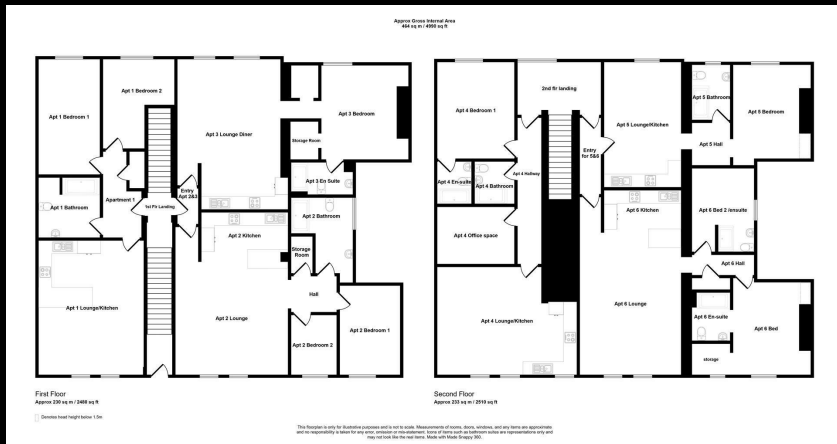
With the exciting option to have the apartment part furnished for an additional £150 pcm

VIEWINGS ARE ESSENTIAL TO APPRECIATE THE LIVING ACCOMADATION THIS APARTMENT OFFERS.

- Apartment
- Bedrooms- 2
- Bathrooms- 1
- Receptions- 1
- EPC- D

Per month

# £1,200



Thompson Estates  
163 Stamford Street Central  
Ashton-Under-Lyne  
OL6 6XW  
0161 399 1630  
info@thompstonea.co.uk

These particulars, whilst believed to be accurate are set out as a general outline only for guidance and do not constitute any part of an offer or contract. Intending purchasers should not rely on them as statements of representation of fact, but must satisfy themselves by inspection or otherwise as to their accuracy. No person in this firms employment has the authority to make or give any representation or warranty in respect of the property.