

# Thompson Estates

LETTINGS AND SALES

Thompson Estates  
163 Stamford Street Central  
Ashton-Under-Lyne  
OL6 6XW

0161 399 1630  
info@thompstonea.co.uk



## Apt 4,135 Stamford Street Central

Thompson Estates are delighted to bring to market, this Two bedroom, Two bathroom, modern stylish living in the heart of Ashton Town Centre.

The apartment a brand new conversion and shares a common area with 6 others each offering spacious contemporary living.

Located in the vibrant and bustling area of Ashton-under-Lyne, this property is surrounded by a fantastic range of local amenities, including popular eateries, bars, and shops.

Upon entry, you're welcomed into a bright open-plan lounge and kitchen, beautifully designed with modern, sleek fittings. The bedroom comfortably accommodates a king-sized bed and provides ample storage space. The stylish bathroom features a luxurious double shower, complete with both a power shower and a soothing rainfall showerhead.

Ashton-under-Lyne also offers excellent commuter links via train, tram, and motorway, providing easy access to Manchester city centre in as little as 14 minutes.

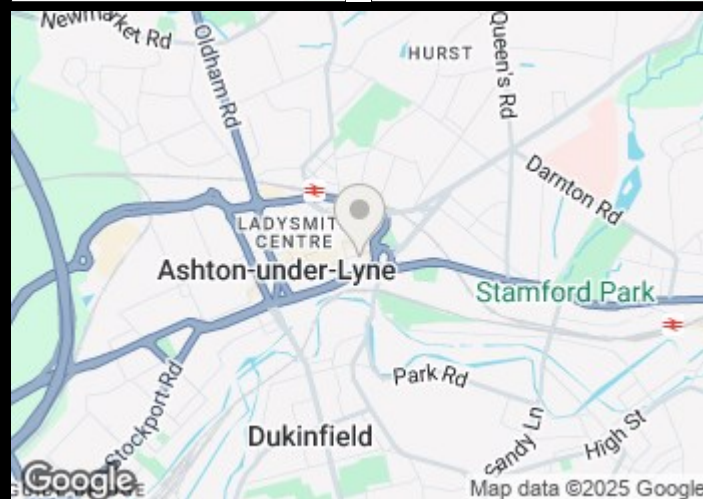
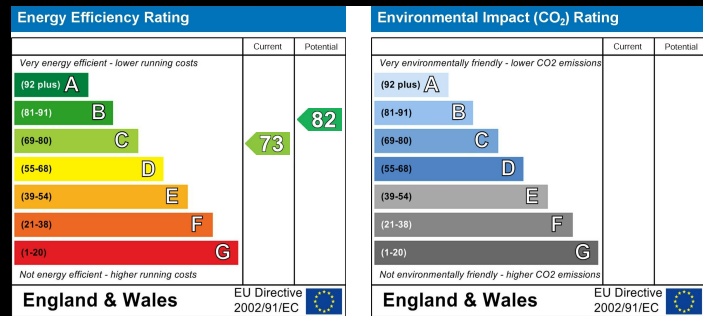
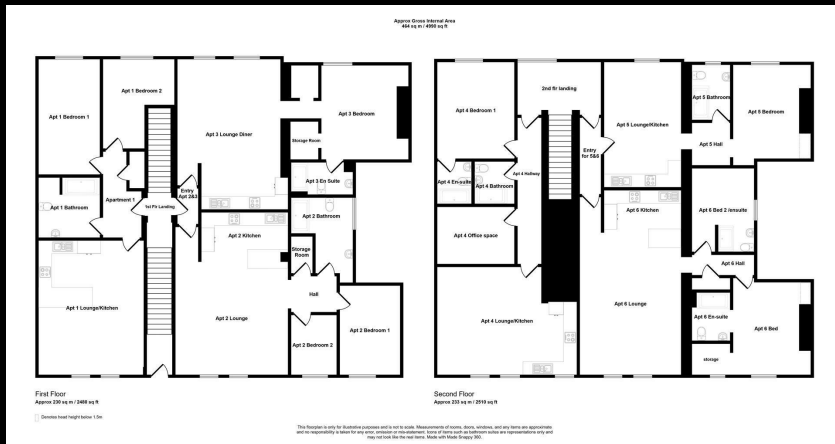
With the exciting option to have the apartment part furnished for an additional £150 pcm

VIEWINGS ARE ESSENTIAL TO APPRECIATE THE LIVING ACCOMADATION THIS APARTMENT OFFERS.

- Apartment
- Bedrooms- 1
- Bathrooms- 1
- Receptions- 0
- EPC- C

Per month

# £1,150



Thompson Estates  
163 Stamford Street Central  
Ashton-Under-Lyne  
OL6 6XW  
0161 399 1630  
info@thompstonea.co.uk

These particulars, whilst believed to be accurate are set out as a general outline only for guidance and do not constitute any part of an offer or contract. Intending purchasers should not rely on them as statements of representation of fact, but must satisfy themselves by inspection or otherwise as to their accuracy. No person in this firm's employment has the authority to make or give any representation or warranty in respect of the property.