



12 Swaledale Mews

, Bridlington, YO16 6FA

Guide price £175,000

Denton Estate Agents are pleased to bring to market this two bedroom detached bungalow, located in a quiet cul-de-sac location in a sought after area. With no ongoing chain.

Situated close to local amenities including a supermarket, library, bus stop and schools.

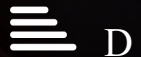
The property comprises of an entrance hall leading in to the kitchen, a lounge / diner, two double bedrooms, bathroom and a small hall way with a storage cupboard containing the boiler.

Externally there is a large drive leading down to the garage, front open garden and a rear enclosed garden accessed through the side gate.

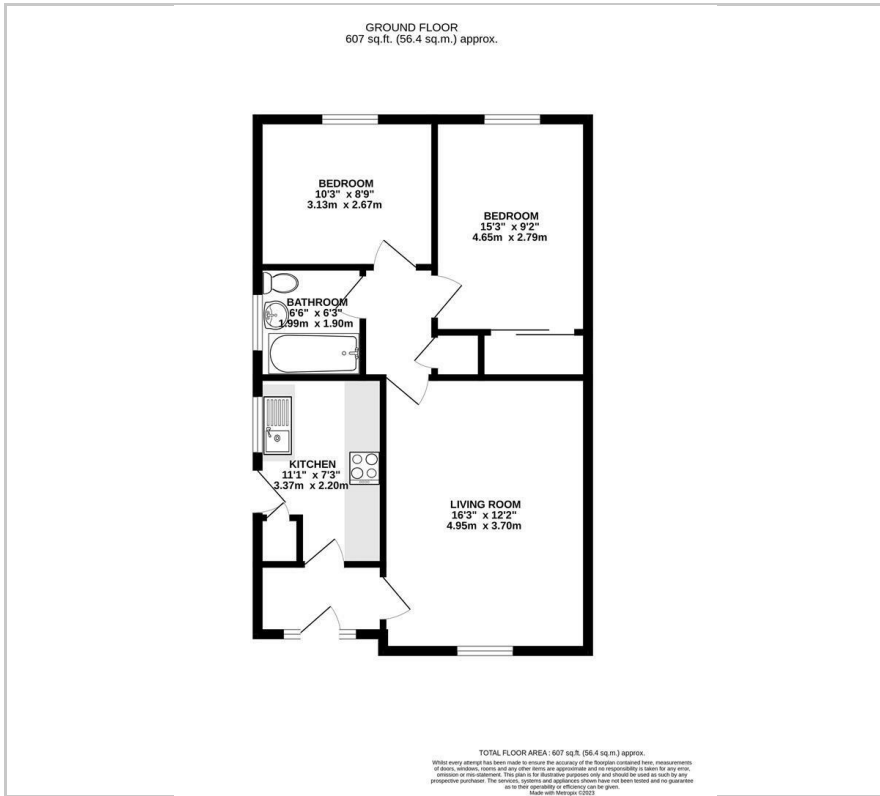
- Detached bungalow
- No Chain
- Garage
- Enclosed rear garden
- Sought after area

Viewing

Please contact our Denton Estate Agents Office on 01262 410820 if you wish to arrange a viewing appointment for this property or require further information.



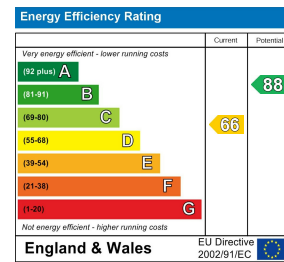
Floor Plan



Area Map



Energy Efficiency Graph



These particulars, whilst believed to be accurate are set out as a general outline only for guidance and do not constitute any part of an offer or contract. Intending purchasers should not rely on them as statements of representation of fact, but must satisfy themselves by inspection or otherwise as to their accuracy. No person in this firm's employment has the authority to make or give any representation or warranty in respect of the property.