



ATLANTE

Discover your future home.


INDOMOSUA

Location

Rua Manuel dos Santos Vaquinhas,
Lote 23 – Almancil



Coffe Shops: 2 min
Hairdresser, Barber: 2 min
Dental, Medical Clinic: 1 min
Banks: 2 min



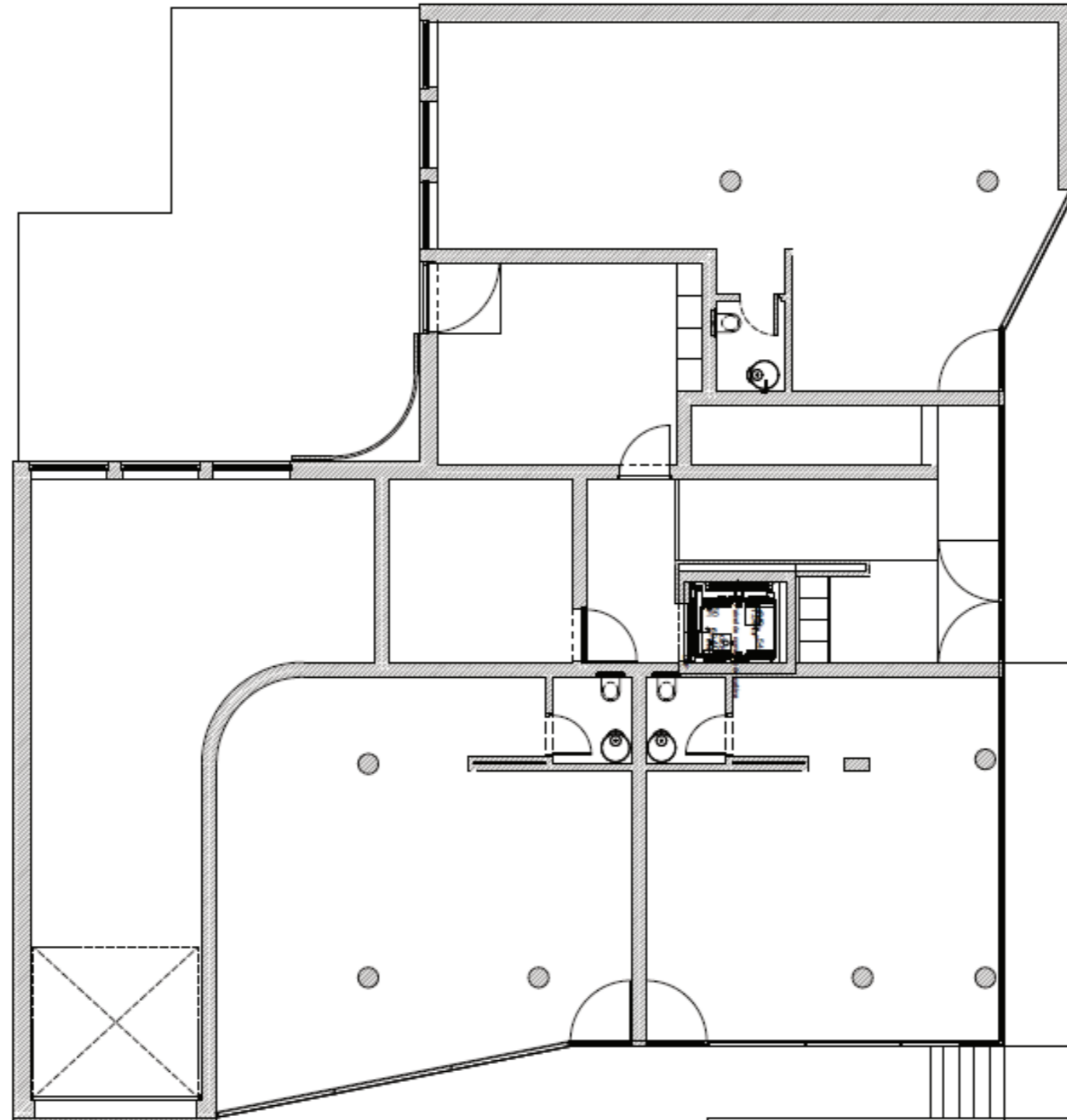
Apolónia: 5 min
Quinta Shopping: 8 min
Vale do Lobo Clubhouse: 10 min
Gigi's Beach Quinta do Lago: 12 min
Mar Shopping Algarve: 10 min
Faro Airport: 18 min



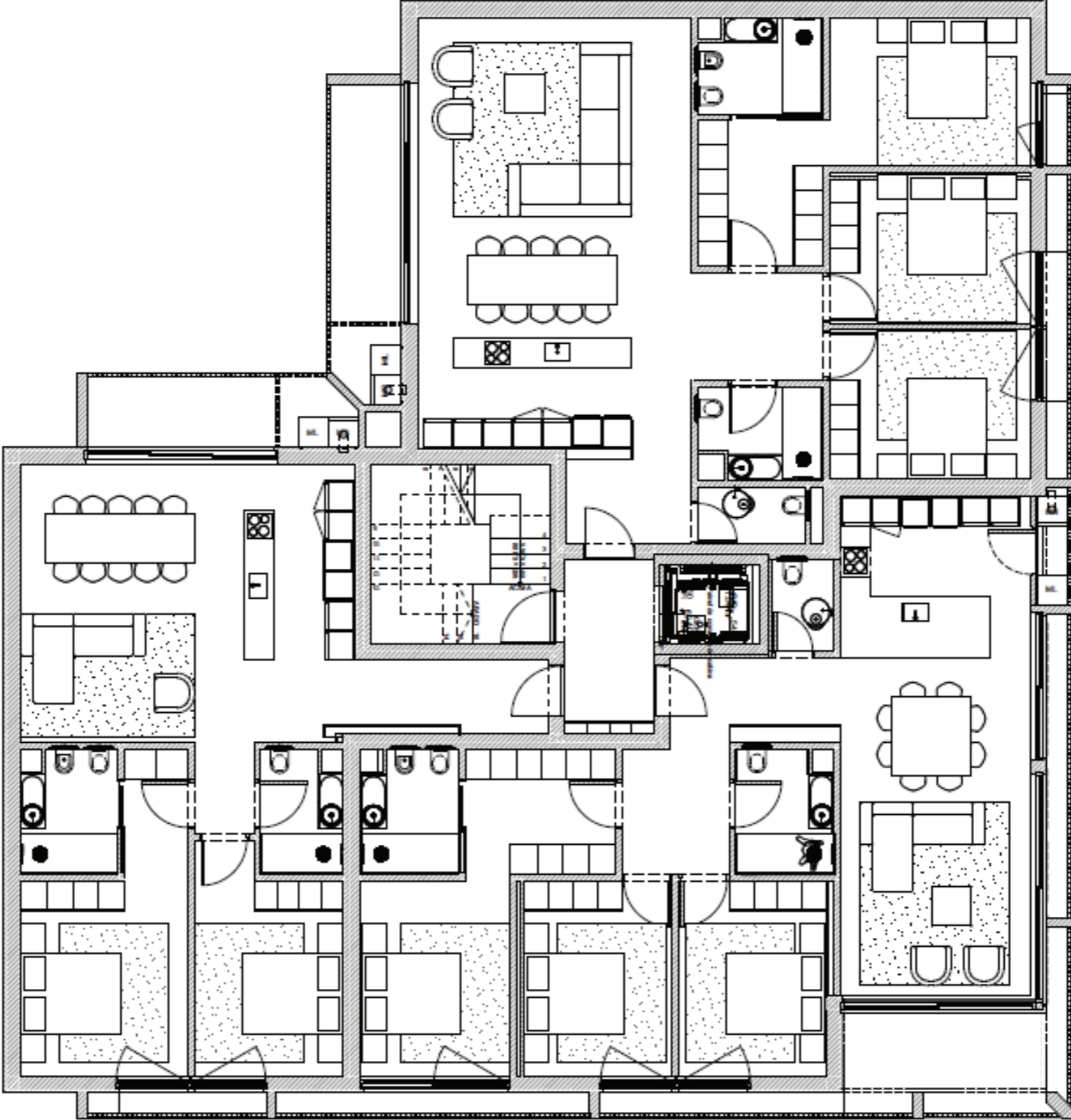
Renderings



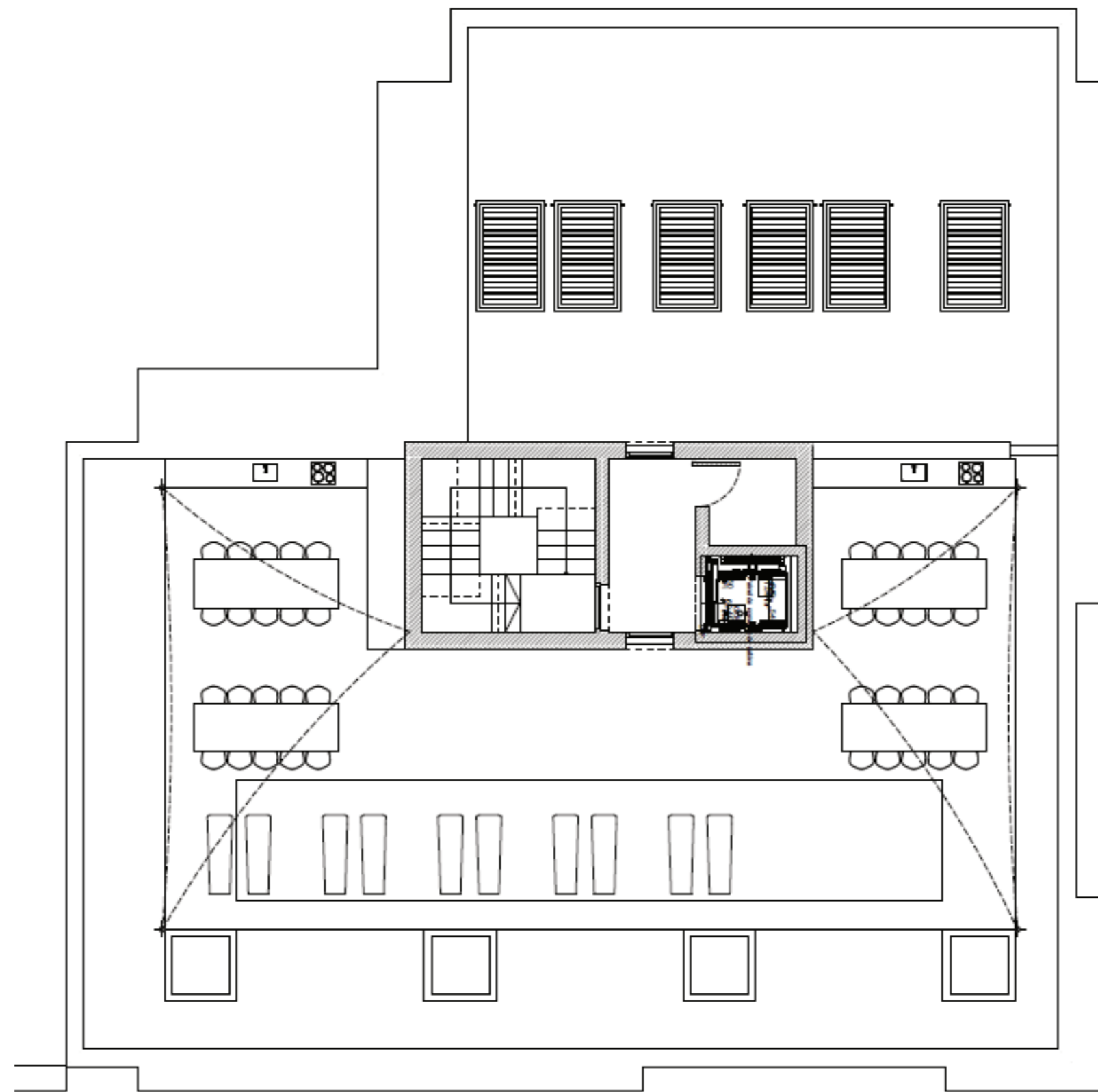
Renderings Ground Floor



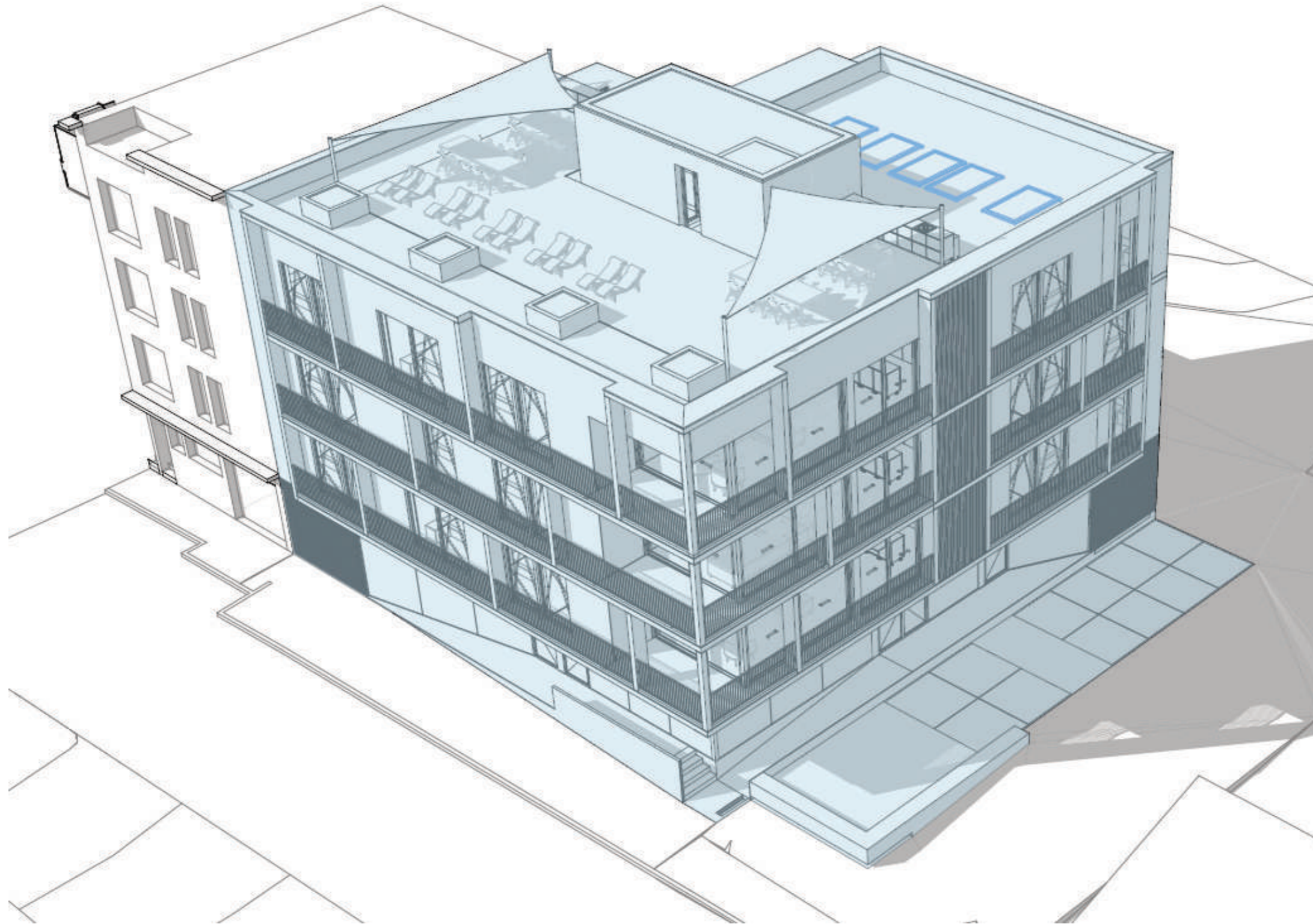
Renderings First / Second / Third Floor



Renderings Rooftop



Renderings



Floor Plans



Floor Plans

ATLANTE

LOCATION: RUA MANUEL DOS SANTOS VAQUINHAS
LOTE 23 DO PP1 DE ALMANCIL, LOULÉ

FLOOR 1 | UNIT D

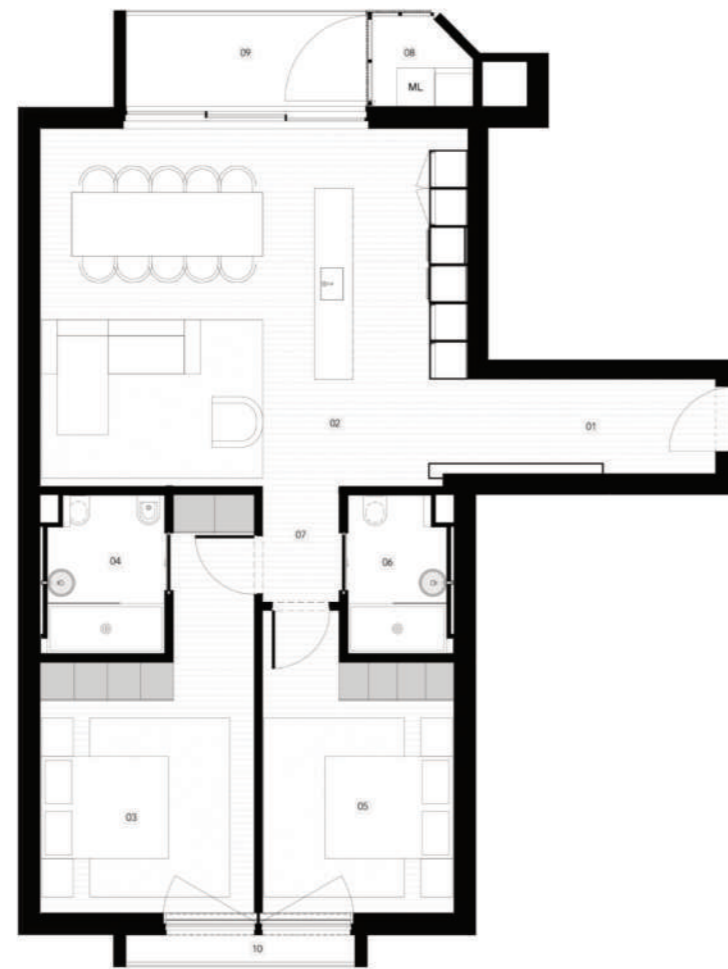
2 BEDROOMS | 2 BATHROOMS

GROSS INTERNAL AREA 100,75 M²

EXTERNAL AREA 6,64 M²

GROSS PRIVATE AREA 107,39 M² + 1 PARKING

- 01 HALL 5,75 M²
- 02 LIVING / DINING / KITCHEN 37,84 M²
- 03 MASTER BEDROOM 16,53 M²
- 04 ENSUITE 4,66 M²
- 05 BEDROOM 12,75 M²
- 06 BATHROOM 3,91 M²
- 07 HALL 2,43 M²
- 08 LAUNDRY 2,19 M²
- 09 BALCONY 5,71 M²
- 10 BALCONY 2,51 M²



Floor plans are conceptual and are intended to give a general indication of the proposed floor layout only. All dimensions are approximate and subject to normal construction variances and tolerances. Kitchen and bathroom layouts are indicative and will be object of a specific study.



ATLANTE

LOCATION: RUA MANUEL DOS SANTOS VAQUINHAS
LOTE 23 DO PP1 DE ALMANCIL, LOULÉ

FLOOR 1 | UNIT E

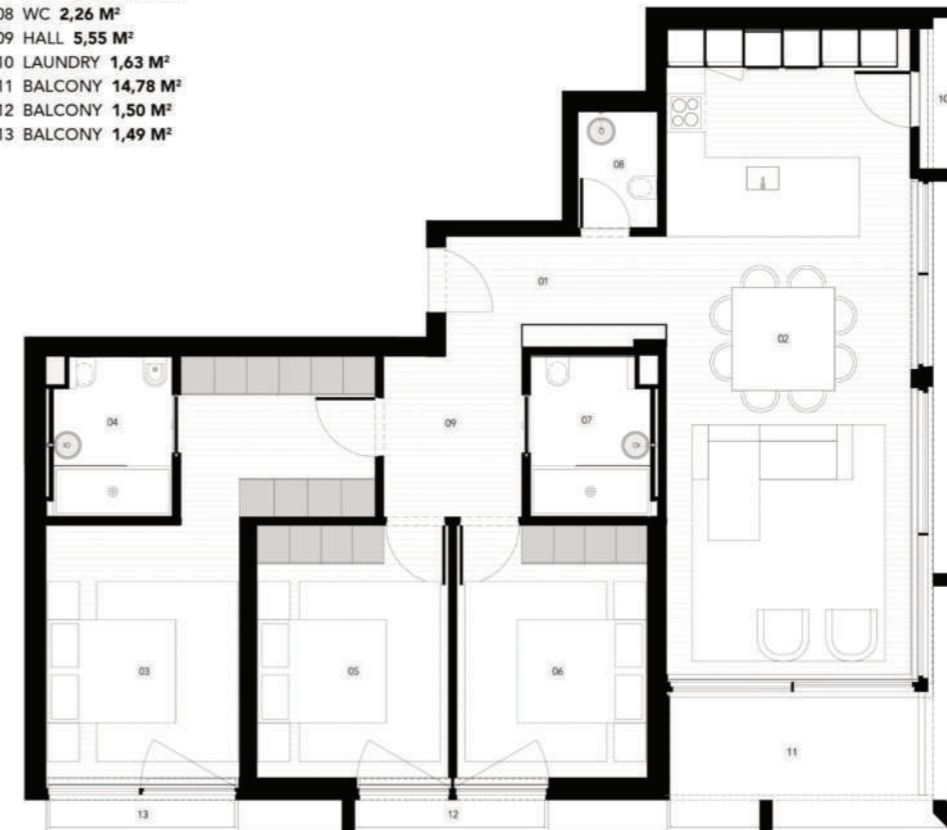
3 BEDROOMS | 3 BATHROOMS

GROSS INTERNAL AREA 123,48 M²

EXTERNAL AREA 19,40 M²

GROSS PRIVATE AREA 142,88 M² + 2 PARKINGS

- 01 HALL 6,01 M²
- 02 LIVING / DINING / KITCHEN 39,01 M²
- 03 MASTER BEDROOM 19,43 M²
- 04 ENSUITE 4,66 M²
- 05 BEDROOM 11,70 M²
- 06 BEDROOM 11,60 M²
- 07 BATHROOM 4,71 M²
- 08 WC 2,26 M²
- 09 HALL 5,55 M²
- 10 LAUNDRY 1,63 M²
- 11 BALCONY 14,78 M²
- 12 BALCONY 1,50 M²
- 13 BALCONY 1,49 M²



Floor plans are conceptual and are intended to give a general indication of the proposed floor layout only. All dimensions are approximate and subject to normal construction variances and tolerances. Kitchen and bathroom layouts are indicative and will be object of a specific study.



Floor Plans

ATLANTE

LOCATION: RUA MANUEL DOS SANTOS VAQUINHAS
LOTE 23 DO PP1 DE ALMANCIL, LOULÉ

FLOOR 1 | UNIT F

3 BEDROOMS | 3 BATHROOMS

GROSS INTERNAL AREA 132,95 M²

EXTERNAL AREA 11,81 M²

GROSS PRIVATE AREA 144,76 M² + 1 PARKING

- 01 HALL 4,86 M²
- 02 LIVING / DINING / KITCHEN 47,67 M²
- 03 MASTER BEDROOM 19,54 M²
- 04 ENSUITE 4,65 M²
- 05 BEDROOM 11,57 M²
- 06 BEDROOM 12,08 M²
- 07 BATHROOM 4,37 M²
- 08 WC 2,49 M²
- 09 HALL 5,70 M²
- 10 LAUNDRY 2,19 M²
- 11 BALCONY 7,21 M²
- 12 BALCONY 1,57 M²
- 13 BALCONY 0,84 M²



Floor plans are conceptual and are intended to give a general indication of the proposed floor layout only. All dimensions are approximate and subject to normal construction variances and tolerances. Kitchen and bathroom layouts are indicative and will be object of a specific study.



ATLANTE

LOCATION: RUA MANUEL DOS SANTOS VAQUINHAS
LOTE 23 DO PP1 DE ALMANCIL, LOULÉ

FLOOR 2 | UNIT G

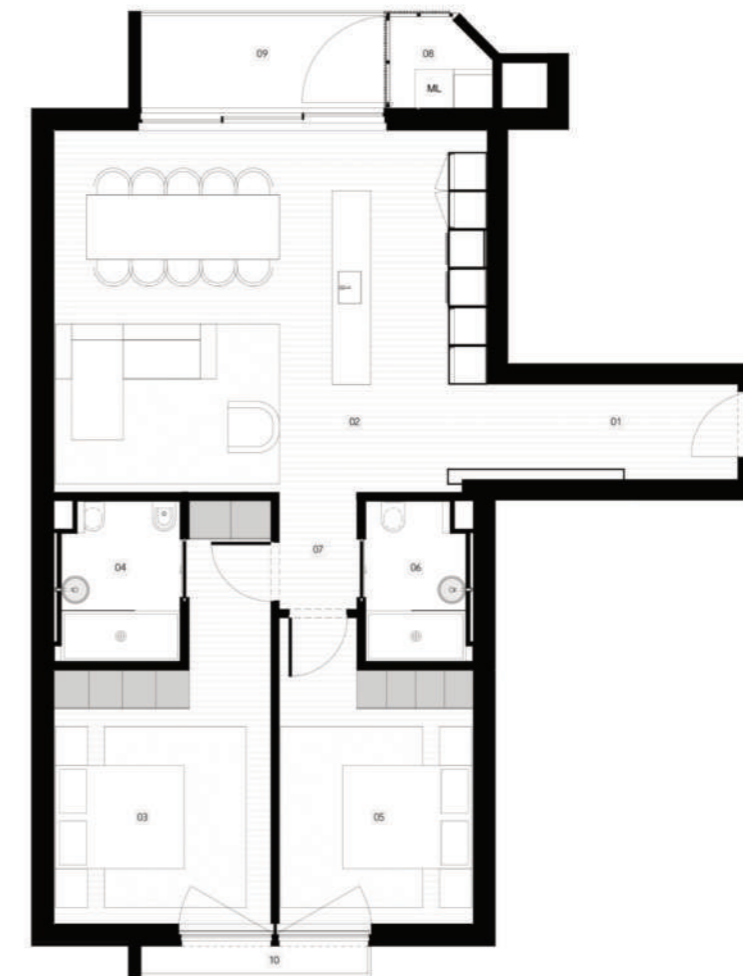
2 BEDROOMS | 2 BATHROOMS

GROSS INTERNAL AREA 100,75 M²

EXTERNAL AREA 12,60 M²

GROSS PRIVATE AREA 113,35 M² + 1 PARKING

- 01 HALL 5,75 M²
- 02 LIVING / DINING / KITCHEN 37,84 M²
- 03 MASTER BEDROOM 16,53 M²
- 04 ENSUITE 4,74 M²
- 05 BEDROOM 12,75 M²
- 06 BATHROOM 3,99 M²
- 07 HALL 2,43 M²
- 08 LAUNDRY 2,19 M²
- 09 BALCONY 5,71 M²
- 10 BALCONY 2,51 M²



Floor plans are conceptual and are intended to give a general indication of the proposed floor layout only. All dimensions are approximate and subject to normal construction variances and tolerances. Kitchen and bathroom layouts are indicative and will be object of a specific study.



Floor Plans

ATLANTE

LOCATION: RUA MANUEL DOS SANTOS VAQUINHAS
LOTE 23 DO PP1 DE ALMANCIL, LOULÉ

FLOOR 2 | UNIT H

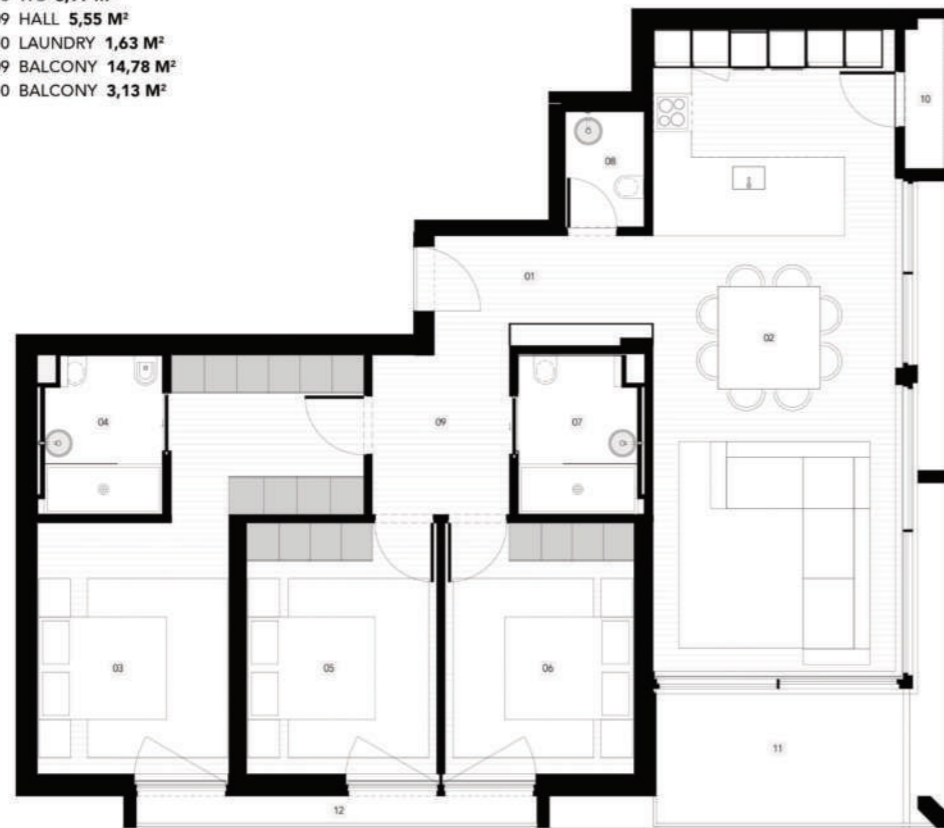
3 BEDROOMS | 3 BATHROOMS

GROSS INTERNAL AREA 123,48 M²

EXTERNAL AREA 19,54 M²

GROSS PRIVATE AREA 143,02 M² + 2 PARKINGS

- 01 HALL 6,01 M²
- 02 LIVING / DINING / KITCHEN 40,18 M²
- 03 MASTER BEDROOM 19,43 M²
- 04 ENSUITE 4,74 M²
- 05 BEDROOM 11,70 M²
- 06 BEDROOM 11,60 M²
- 07 BATHROOM 4,80 M²
- 08 WC 3,99 M²
- 09 HALL 5,55 M²
- 10 LAUNDRY 1,63 M²
- 09 BALCONY 14,78 M²
- 10 BALCONY 3,13 M²



Floor plans are conceptual and are intended to give a general indication of the proposed floor layout only. All dimensions are approximate and subject to normal construction variances and tolerances. Kitchen and bathroom layouts are indicative and will be object of a specific study.



ATLANTE

LOCATION: RUA MANUEL DOS SANTOS VAQUINHAS
LOTE 23 DO PP1 DE ALMANCIL, LOULÉ

FLOOR 2 | UNIT I

3 BEDROOMS | 3 BATHROOMS

GROSS INTERNAL AREA 132,95 M²

EXTERNAL AREA 11,81 M²

GROSS PRIVATE AREA 144,76 M² + 1 PARKINGS

- 01 HALL 4,86 M²
- 02 LIVING / DINING / KITCHEN 47,67 M²
- 03 MASTER BEDROOM 19,54 M²
- 04 ENSUITE 4,73 M²
- 05 BEDROOM 11,57 M²
- 06 BEDROOM 12,08 M²
- 07 BATHROOM 4,42 M²
- 08 WC 2,49 M²
- 09 HALL 5,70 M²
- 10 LAUNDRY 2,19 M²
- 11 BALCONY 7,21 M²
- 12 BALCONY 0,84 M²
- 13 BALCONY 1,57 M²



Floor plans are conceptual and are intended to give a general indication of the proposed floor layout only. All dimensions are approximate and subject to normal construction variances and tolerances. Kitchen and bathroom layouts are indicative and will be object of a specific study.



Floor Plans

ATLANTE

LOCATION: RUA MANUEL DOS SANTOS VAQUINHAS
LOTE 23 DO PP1 DE ALMANCIL, LOULÉ

FLOOR 3 | UNIT J

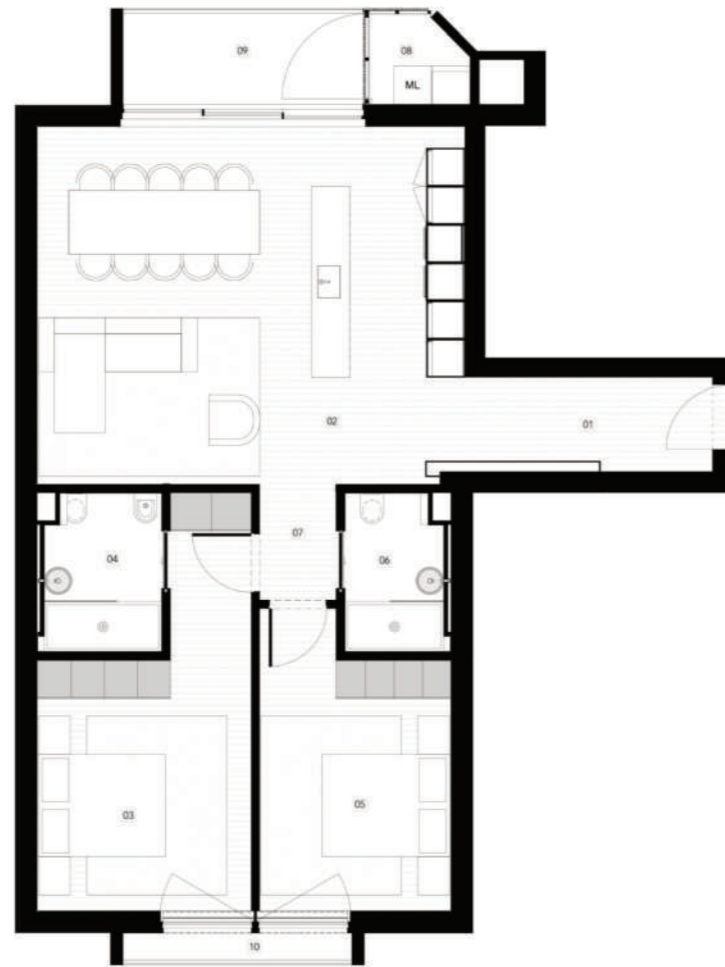
2 BEDROOMS | 2 BATHROOMS

GROSS INTERNAL AREA 100,75 M²

EXTERNAL AREA 6,64 M²

GROSS PRIVATE AREA 107,39 M² + 1 PARKING

- 01 HALL 5,75 M²
- 02 LIVING / DINING / KITCHEN 37,84 M²
- 03 MASTER BEDROOM 16,53 M²
- 04 ENSUITE 4,66 M²
- 05 BEDROOM 12,75 M²
- 06 BATHROOM 3,91 M²
- 07 HALL 2,43 M²
- 08 LAUNDRY 2,19 M²
- 09 BALCONY 5,71 M²
- 10 BALCONY 2,51 M²



Floor plans are conceptual and are intended to give a general indication of the proposed floor layout only. All dimensions are approximate and subject to normal construction variances and tolerances. Kitchen and bathroom layouts are indicative and will be object of a specific study.



ATLANTE

LOCATION: RUA MANUEL DOS SANTOS VAQUINHAS
LOTE 23 DO PP1 DE ALMANCIL, LOULÉ

FLOOR 3 | UNIT K

3 BEDROOMS | 3 BATHROOMS

GROSS INTERNAL AREA 123,48 M²

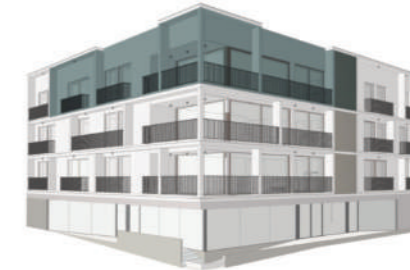
EXTERNAL AREA 19,40 M²

GROSS PRIVATE AREA 142,88 M² + 2 PARKINGS

- 01 HALL 6,01 M²
- 02 LIVING / DINING / KITCHEN 39,01 M²
- 03 MASTER BEDROOM 19,43 M²
- 04 ENSUITE 4,66 M²
- 05 BEDROOM 11,70 M²
- 06 BEDROOM 11,60 M²
- 07 BATHROOM 4,71 M²
- 08 WC 2,26 M²
- 09 HALL 5,55 M²
- 10 LAUNDRY 1,63 M²
- 11 BALCONY 14,78 M²
- 12 BALCONY 1,50 M²
- 13 BALCONY 1,49 M²



Floor plans are conceptual and are intended to give a general indication of the proposed floor layout only. All dimensions are approximate and subject to normal construction variances and tolerances. Kitchen and bathroom layouts are indicative and will be object of a specific study.



Floor Plans

ATLANTE

LOCATION: RUA MANUEL DOS SANTOS VAQUINHAS
LOTE 23 DO PP1 DE ALMANCIL, LOULÉ

FLOOR 3 | UNIT L

3 BEDROOMS | 3 BATHROOMS

GROSS INTERNAL AREA 132,95 M²

EXTERNAL AREA 11,81 M²

GROSS PRIVATE AREA 144,76 M² + 1 PARKING



- 01 HALL 4,86 M²
- 02 LIVING / DINING / KITCHEN 47,67 M²
- 03 MASTER BEDROOM 19,54 M²
- 04 ENSUITE 4,65 M²
- 05 BEDROOM 11,57 M²
- 06 BEDROOM 12,08 M²
- 07 BATHROOM 4,37 M²
- 08 WC 2,49 M²
- 09 HALL 5,70 M²
- 10 LAUNDRY 2,19 M²
- 11 BALCONY 7,21 M²
- 12 BALCONY 1,57 M²
- 13 BALCONY 0,84 M²



Floor plans are conceptual and are intended to give a general indication of the proposed floor layout only. All dimensions are approximate and subject to normal construction variances and tolerances. Kitchen and bathroom layouts are indicative and will be object of a specific study.

Amenities

Rooftop terrace: Elevated outdoor retreat for the residents for relaxation.

Parking & storage: Secure basement parking & storage

Electric Car Charging: Forward-thinking amenity includes pre-installed electric car charging points, promoting eco-conscious living and supporting residents with electric vehicles.

Schindler Elevator: High-quality Schindler elevator serving all floors, ensuring smooth and efficient vertical transportation for residents and visitors.

Video Entry System: Advanced video entry system providing an added layer of security, allowing residents to visually confirm visitors before granting access.

