



JOSHUA JAMES

ESTATE AGENTS



## Mill Street, Gamlingay SG19 3JW

£425,000 Asking Price

🛏 4 🍳 2 🛋 1

- Characterful Period Property
- Set Over Three Storeys
- Lounge & Dining Room with Wood Burning Stoves
- Open Plan Kitchen / Dining Room
- Four Double Bedrooms
- En-Suite Shower & Family Bathroom
- Further Scope for Modernisation
- Rear Garden & On Street Parking
- Easy Access to Shops & Schools
- Comberton School Catchment Area



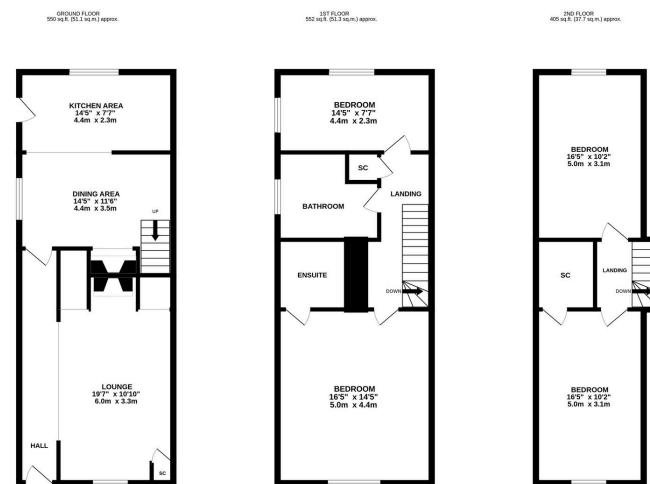
An inviting four-bedroom home offering versatile living spaces and charming period features, ideally located close to local amenities. This property spans three floors, providing ample room for comfortable living and is perfect for those seeking a property of character. The accommodation comprises lounge, open plan kitchen / dining room, four double bedrooms, en-suite shower & family bathroom.

The property has benefited from several improvements by the current owners and offers excellent scope for its new owners to put their own stamp on it and create their forever home. We encourage an early viewing to fully appreciate the space and charm on offer.









TOTAL FLOOR AREA: 1508 sq. ft. (140.1 sq.m.) approx.  
Whilst every effort has been made to ensure the accuracy of the figures contained herein, measurements of doors, windows, rooms and any other items are approximate and no responsibility is taken for any error, omission or misstatement. This plan is for illustrative purposes only and should be used as such by any prospective purchaser. The actual area, figures and layout may vary from the above stated and no guarantee as to their accuracy or efficiency can be given.  
Made with Metaplan 12/03/20