






JOSHUA JAMES

ESTATE AGENTS

Whittets Close, Great Gransden, Sandy, Bedfordshire, SG19 3AL

£750,000

 4  2  3

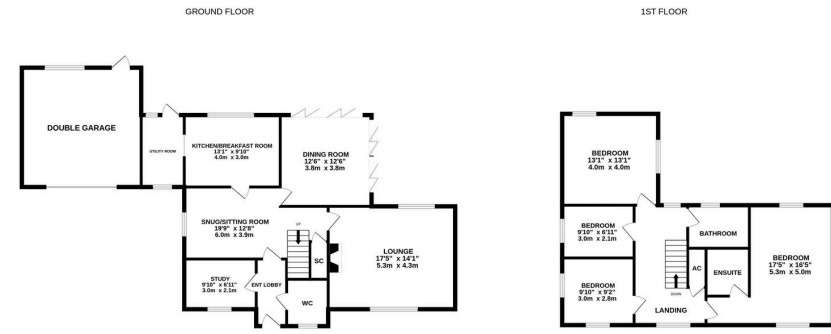
- Premier Village Location
- Three Reception Rooms
- Well Proportioned Accommodation
- Master En-Suite & Family Bathroom
- Off Road Parking & Double Width Garage
- Small Private Cul De Sac of Just 6 Properties
- Fitted Kitchen / Breakfast Room & Utility Room
- Four Bedrooms
- Private Rear Garden
- Walking Distance to all Local Amenities & School



Situated in the highly sought after village of Great Gransden sits this well proportioned detached family home. Being one of only six properties on a small private centrally located cul de sac. The property benefits from three principal reception rooms, fitted kitchen / breakfast room with separate utility & four bedrooms with en-suite to the master. Externally there is a private rear garden, driveway providing off road parking & double width garage.

This highly sought after village has a strong sense of community. There is a thriving village shop, post office, bowls club, tennis club, village hall & 'The Reading Room', which hosts many functions & activities. The local Church of England primary School 'Barnabas Oley' is rated as Outstanding by OFSTED, which in turn feeds into the highly regarded 'Comberton Village College' for secondary schooling.





While every attempt has been made to ensure the accuracy of the floorplan contained herein, measurements of doors, windows, rooms and any other items are approximate and no responsibility is taken for any errors, omissions or mis-statements. This plan is for illustrative purposes only and should be used as such by any prospective purchaser. The services, systems and appliances shown have not been tested and no guarantee as to their operability or efficiency can be given.
Made with Metropix ©2024

