

Renovated Period Farmhouse
Norfolk Broads, Catfield
O.I.E.O £950,000

websters.



This exquisite 1800s property, steeped in history yet meticulously renovated and extended to the highest standards, blends old-world charm with contemporary elegance.



4 bedrooms



2 bathrooms



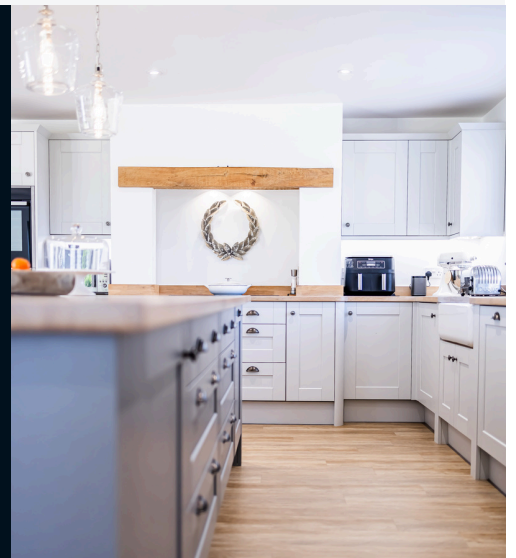
3 Receptions



Pending



Garage



Highlighted Features:

- 1800's ORIGINAL FARMHOUSE
- HEAVILY EXTENDED AND RENOVATED
- 3 RECEPTION ROOMS
- GARAGE & DOUBLE CARPORT
- UTILITY & BOOT ROOM
- 4 LARGE DOUBLE BEDROOMS
- ENSUITE MAIN BEDROOM
- LUXURIOUS FIXTURES & FITTINGS
- LARGE LAWNED GARDENS
- COUNCIL TAX BAND F

Property Overview

This exquisite 1800s property, steeped in history yet meticulously renovated and extended to the highest standards, blends old-world charm with contemporary elegance. It features a grand entrance hall that welcomes you with a sense of grandeur, a cosy living room centred around a rustic wood burner, and a versatile reception room currently serving as a playroom. The heart of the home is the expansive, light-filled open-plan kitchen/dining area, complete with integrated appliances, a striking oak island, and bi-fold doors that open to the serene outdoors. The practicalities are well-covered with a utility room and a boot room. Upstairs, a spacious galleried landing leads to four bedrooms, including a master suite with a private ensuite, and a stylish family bathroom with a four-piece suite.

Outside, the property offers a driveway, an oversized garage, idyllic field views, and a charming feature water well, providing a perfect blend of functionality and picturesque beauty.

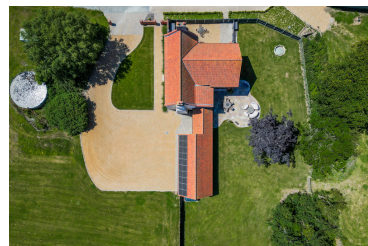
Key Information:

Local Authority: North Norfolk District Council

Council Tax: Band F

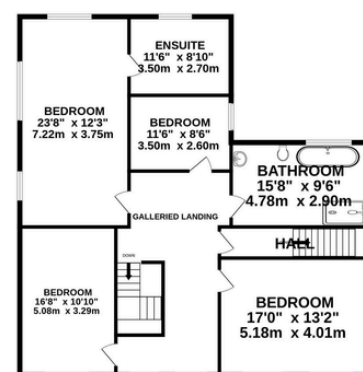
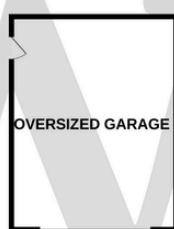
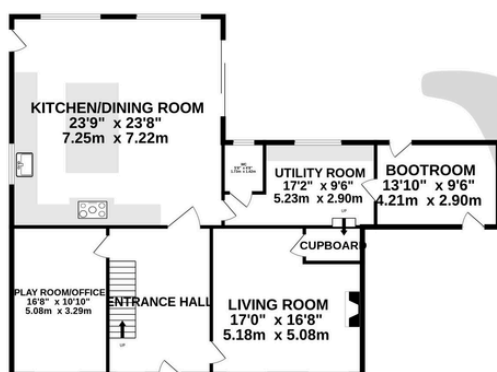
Tenure: Freehold

Services: Oil Central Heating, Electricity, Water and Private Sewage



GROUND FLOOR
1952 sq.ft. (181.3 sq.m.) approx.

1ST FLOOR
1369 sq.ft. (127.2 sq.m.) approx.



TOTAL FLOOR AREA : 3321 sq.ft. (308.5 sq.m.) approx.

Enquire:

Coltishall Office
01603 334433
coltishall@webstersestateagents.co.uk

webstersestateagents.co.uk

websters.

Scan to view:

