




Ronald Ross

Flat/Apartment For Sale
1/2, 10 Richmond Park Terrace, Oatlands
Glasgow
G5 0LX

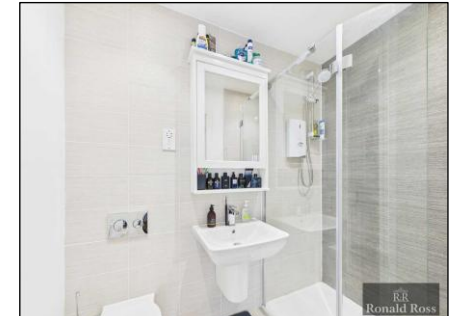
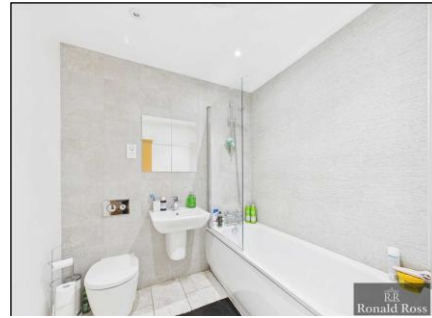


1 

2 

2 

Flat/Apartment - Approx Size: 70 sq m



Ronald Ross is delighted to offer to the market this stylish first floor apartment that is located at Richmond Park Terrace, Oatlands, Glasgow.

The layout on offer includes reception hallway with two storage cupboards, dual aspect open plan living that includes lounge, dining area and kitchen, bathroom, two bedrooms with primary ensuite and fitted wardrobes in primary bedroom.

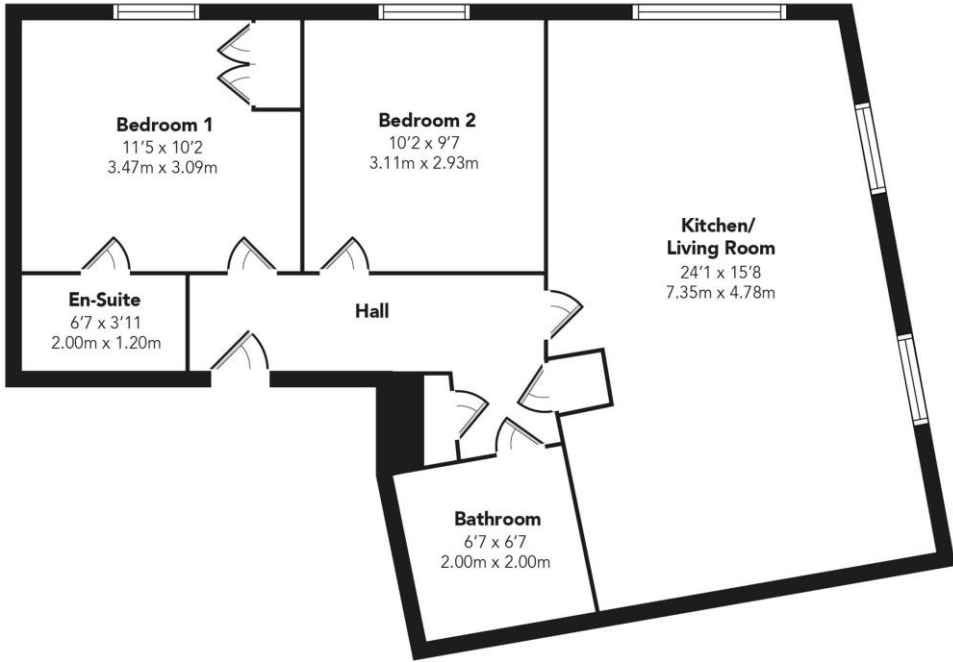
Further benefits include gas central heating, modern double glazing plus secure main entry system and on street parking.

The apartment is well located in the popular Oatlands development which has a park, local shop and newly open footbridge directly into Glasgow Green. Conveniently placed for accessing the motorway network giving links to Glasgow Airport, Edinburgh and further afield, there is also easy access to the city centre and Merchant City with a great

selection of shops, bars and restaurants as well as Strathclyde University and the City of Glasgow College.

Selling Agents:
Kimberley Ronald & Robert Ross

Property Ref:
RRL1000263



Floorplans are indicative only - not to scale
Produced by Plushplans



Orbital House, Redwood
Crescent, East Kilbride,
Glasgow G74 5PR

t. 0141 487 6888

sales@ronaldross.co.uk
lettings@ronaldross.co.uk
www.ronaldross.co.uk

