




Ronald Ross

DETACHED
Ravenswood, Prieston Road
Bridge of Weir
PA11 3AN





Ravenswood is an extraordinary, detached Victorian villa dating back 1872. Offering over 10,403 square feet of versatile living space across split level floors, it seamlessly blends classic period details with modern comforts.

Over its lifetime, only five families have resided here, attesting to its enduring appeal and cherished status.

Etched stone gateposts mark the entrance to a substantial block-paved driveway and a separate single garage.

The welcoming front door opens into a vestibule and then into a stunning reception hallway, showcasing beautiful original wood panelling, exposed ceiling beams, and a grand staircase intricately carved with alternating Scottish thistle and English rose motifs. From here, you can access the inviting sitting room, study, home office, and a rear hallway leading to the home's extended living areas.

The dining kitchen has a cosy breakfast nook, which, along with the dining room, are positioned to make the most of the garden views. The latter of these 2 rooms lead through a leisure wing, featuring a large entertainment area with hand-made custom elm tops and sills, a generous swimming pool with large jacuzzi, a sauna and steam room, and a well-equipped gym.

Above the leisure suite is a fully soundproofed home music studio, which could also serve as an excellent gaming room. A separate cinema room with a magnificent original stained-glass window offers a wonderful space for family movie nights or viewing sports with friends.

The family kitchen is a standout space, featuring a full range of contemporary floor and wall units, high-quality integrated appliances, and a generous dining and seating area framed by large windows overlooking the grounds. A guest WC, utility room, and a separate laundry room are also located off the rear hallway. From the main hallway, a broad carved oak staircase—with its ornate handrail and balustrade—leads to the mid-landing and beyond, where all eight bedrooms benefit from their own en suite facilities.

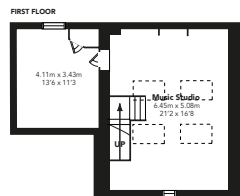
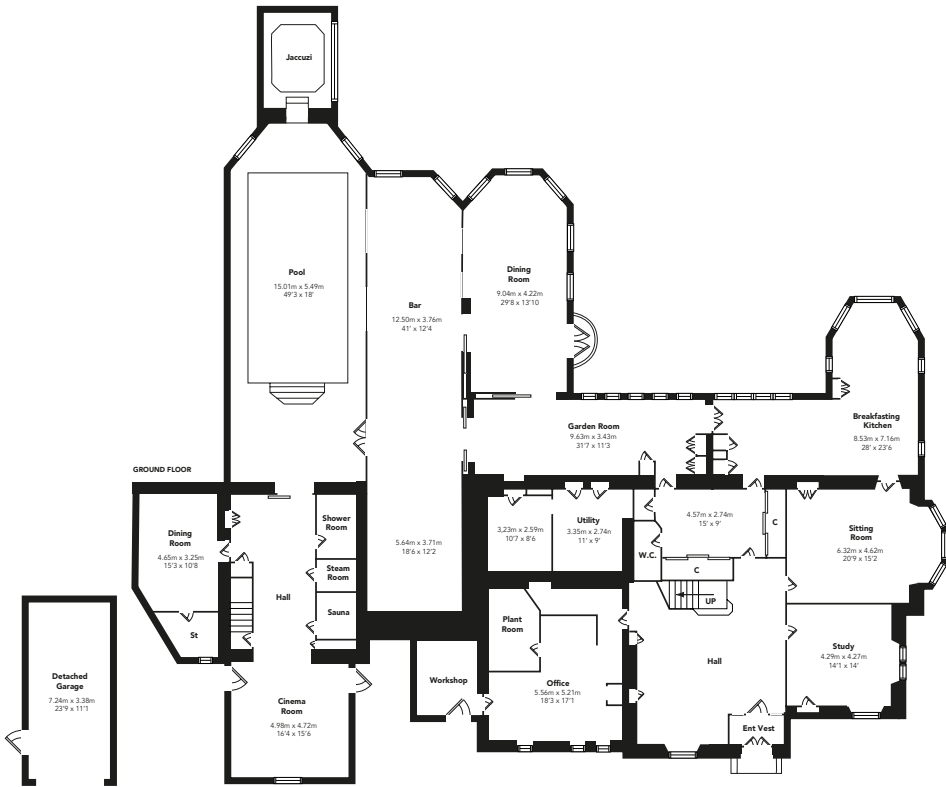
The first level contains 3 double en-suite bedrooms, one of which is currently used as a snug. The next level offers two of further bedrooms, including a luxurious principal suite with dual en suite bathrooms and dressing rooms equipped with abundant built-in storage. The upper 2 floors provide 3 additional en suite bedrooms, ensuring comfort and privacy for every family member.

Ravenswood's extensive grounds span approximately 1.25 acres, ensuring both privacy and a lovely setting for outdoor enjoyment. Mature trees, hedges, and shrubs border expansive lawns, while a raised paved patio offers a wonderful spot for relaxation or entertaining.

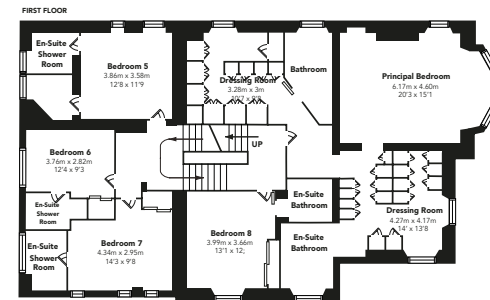
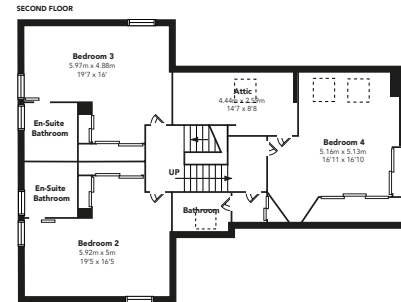
A charming copper beech archway opens to a meadow-style lawn and orchard, adjacent to which is a professionally levelled and rigid-fenced 5-a-side football pitch. A winding pathway then leads to a gloriously scenic dell with pools and a waterfall marking the boundary of the property.

Additionally, an outline planning proposal has been created for development to the rear of the plot, offering a unique opportunity for expansion

Property Ref: RRL1000180



Floorplans are indicative only - not to scale
Produced by Plushplans



R.R.
Ronald Ross

Orbital House, Redwood
Crescent, East Kilbride,
Glasgow G74 5PR

t. 0141 487 6888

sales@ronaldross.co.uk
lettings@ronaldross.co.uk
www.ronaldross.co.uk