

## Chelmsford Road, Dunmow, CM6 1LL

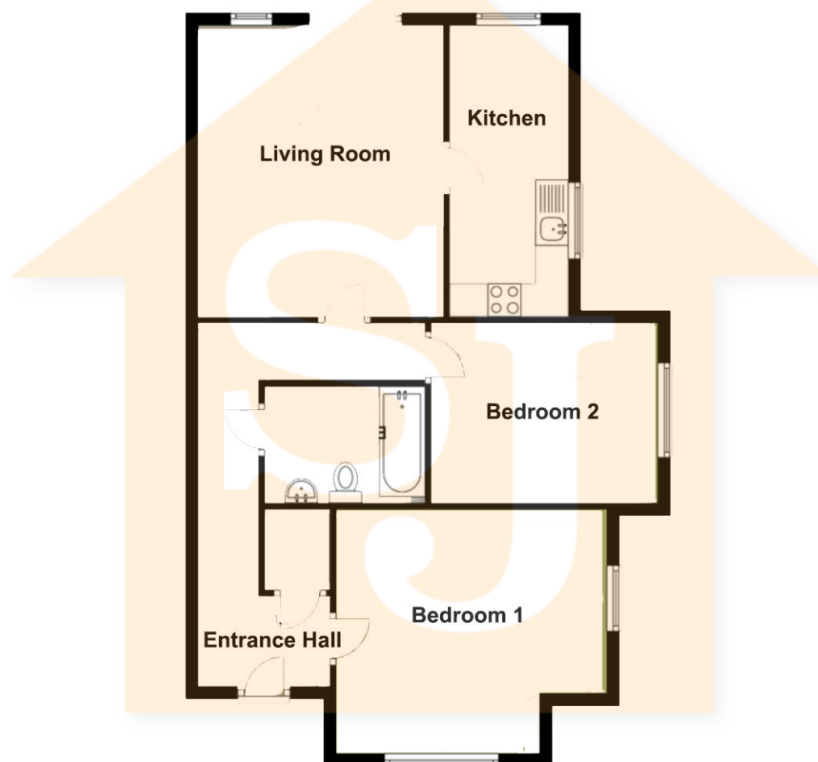
Guide Price £360,000

🛏 2 🪑 1 🚗 1



- Unique Style
- Garage
- Well Kept Garden
- Off-street parking
- 
- 
- Leaded Double Glazed Windows and Doors
- 2 Double Bedrooms
- Semi-Detached
- 
- 

Ground Floor  
Approx 65.2 Sqm (702 sqft)



Built in 2016, this unique looking bungalow with leaded windows/doors and high ceilings which is in keeping with adjacent "Langley's Cottage". This home has a single garage with off street parking and an enclosed rear garden.