

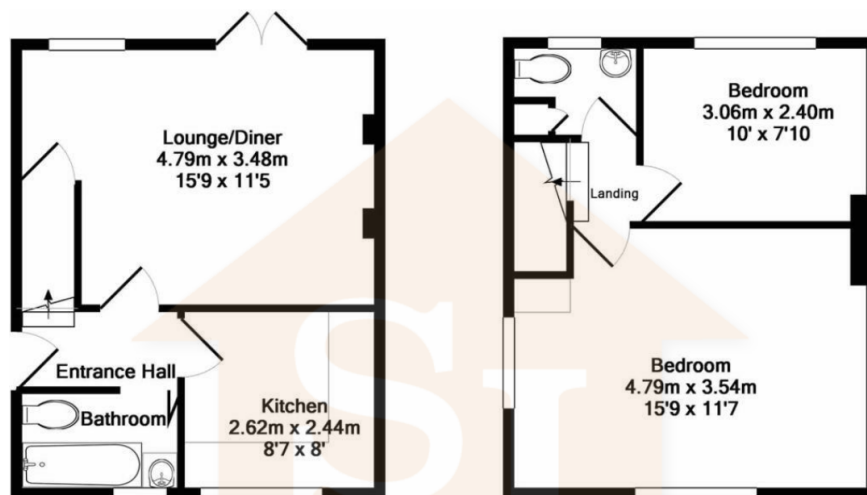
1 Wheatley Road

Offers Over £375,000

🛏 2 🚿 2 🚻 1



- Landscaped Rear Garden
- Driveway for 6+ Vehicles
- 1st floor W/C
- Room To Extend (STP)
-
- 2 Bedrooms
- Huge Plot
- Fitted Kitchen
-
-



Ground floor
Approx. Floor
Area 28.2 Sq.M.
(303 Sq.Ft.)

1st floor
Approx. Floor
Area 28.1 Sq.M.
(303 Sq.Ft.)

Total Approx. Floor Area 56.3 Sq.M. (606 Sq.Ft.)

Whilst every attempt has been made to ensure the accuracy of the floor plan contained here, measurements of doors, windows, rooms and any other items are approximate and no responsibility is taken for any error, omission, or mis-statement. This plan is for illustrative purposes only and should be used as such by any prospective purchaser. The services, systems and appliances shown have not been tested and no guarantee as to their operability or efficiency can be given
Made with Metropix ©2018

This 2 bedroom semi-detached home has huge potential situated on a very generous plot. With a huge driveway (6+ vehicles), landscaped garden and space to extend to the side (STP), there are many options!

