

cruise
ESTATE AGENTS

OFFERS OVER

£110,000

Dillarsview
Lesmahagow, ML11 0FD

PROPERTY SUMMARY

Located within the periphery of the pretty, semi-rural town of Lesmahagow within a popular modern development is this deceptively spacious, two-bedroom mid-terrace villa. With well-maintained accommodation, quiet cul de sac position, and close proximity to the M74 road network, this lovely home is set to appeal to first time buyers, downsizers, and those commuting to Glasgow and Edinburgh.

The well-proportioned accommodation comprises; entrance hallway with substantial understairs storage, two-piece cloaks/wc, generous rear facing lounge with ample space for dining table and chairs, and patio door leading to rear garden.

Located on the upper level and two double bedrooms both with fitted wardrobes. The bedroom to the rear of the property enjoys the best of the beautiful country views. Completing the layout of apartments is a three-piece family bathroom with over-bath shower.

The property further benefits from double glazing, gas central heating, and driveway to front. The fully enclosed child and pet friendly rear garden is laid mainly to lawn, with a slabbed patio area, and access for bins.

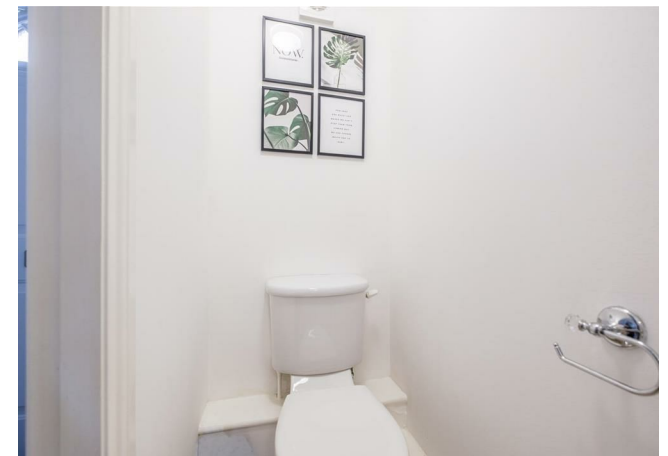
2



1



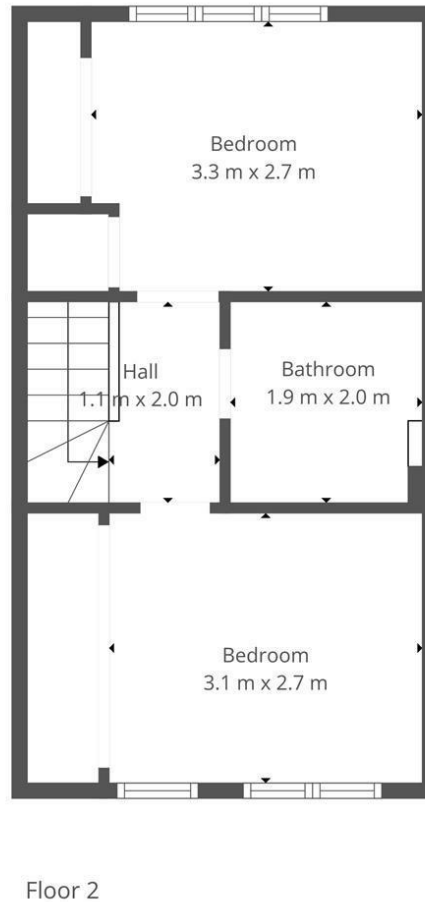
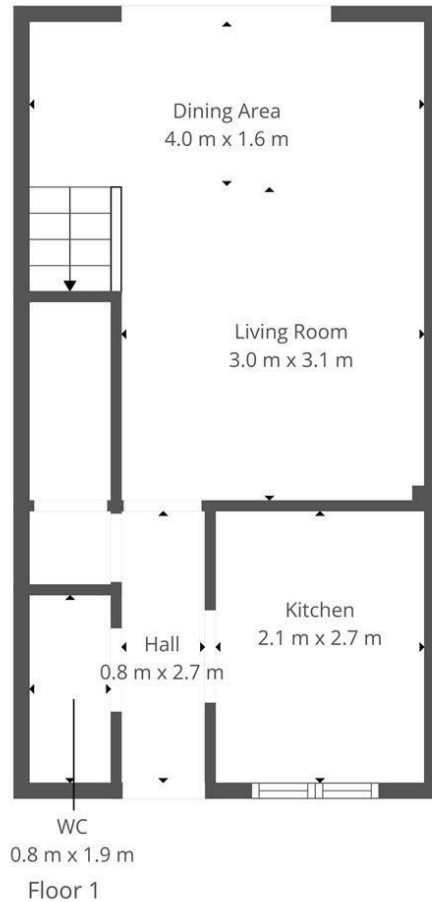
1











LOCAL AUTHORITY

South Lanarkshire

TENURE

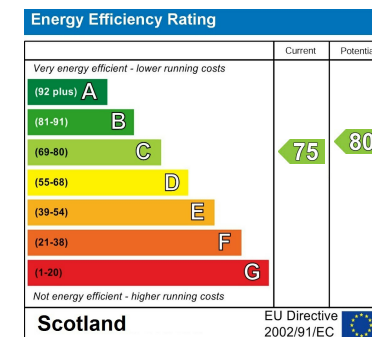
Freehold

COUNCIL TAX BAND

C

VIEWINGS

By prior appointment only



Agents Note: Whilst every care has been taken to prepare these particulars, they are for guidance purposes only. All measurements are approximate and are for general guidance purposes only and whilst every care has been taken to ensure their accuracy, they should not be relied upon and potential buyers/tenants are advised to recheck the measurements



This Floorplan Is Intended To Give An Indication Of The Layout Only.



cruive
ESTATE AGENTS

OFFICE ADDRESS

9 Townhead Street
Strathaven
ML10 6AB

OFFICE DETAILS

01357 510088
judithmcgill@cruive-
estateagents.co.uk