

cruise  
ESTATE AGENTS

OFFERS OVER

£220,000

**Townswell Gardens**  
Glassford, ML10 6YS



## PROPERTY SUMMARY

Enjoying what is arguably one of the prettiest outlooks in South Lanarkshire is this immaculately maintained modern, semi-detached villa constructed by Lovell Homes circa 2020. This beautiful home with its stunning views across open countryside all the way to Tinto Hill will undoubtedly appeal to a wide range of buyers, making a fabulous family home, downsize, or first time buy. With tasteful, fresh decor, bright and spacious rooms, and a very pretty semi-rural location this modern villa is sure to be popular.

The well-appointed accommodation comprises; reception hallway with storage cupboard and modern two-piece cloaks/wc, generous front facing lounge perfectly positioned to take in the best of the country views, stylish modern dining size kitchen with integrated appliances and French doors leading to rear garden.

On the upper level are three sizeable bedrooms, modern three-piece family bathroom with over-bath shower, and two further storage cupboards. The double master bedroom has the luxury of its own modern en-suite shower room and built in mirrored wardrobes. A further sizeable double bedroom and single bedroom complete the first-floor accommodation.

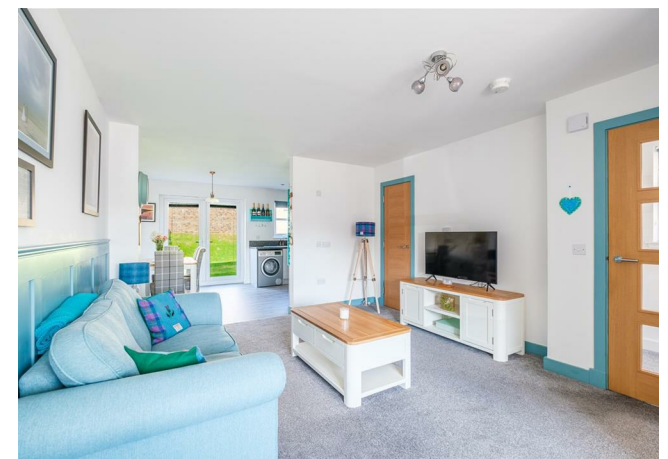
3



2



2





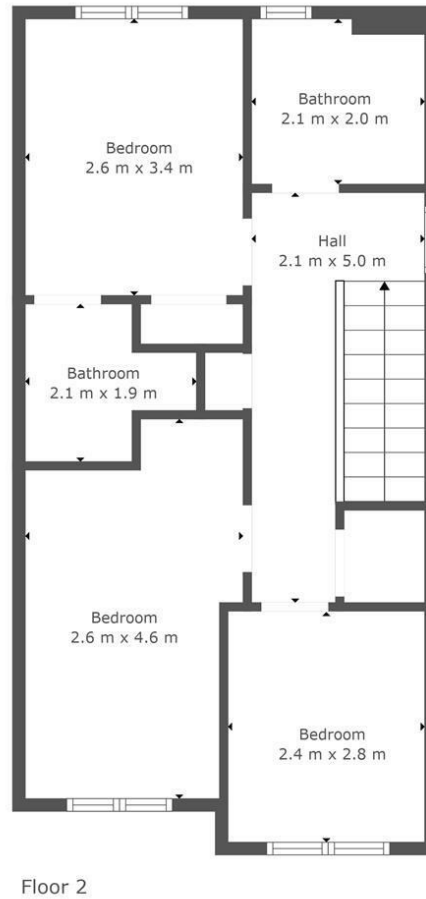
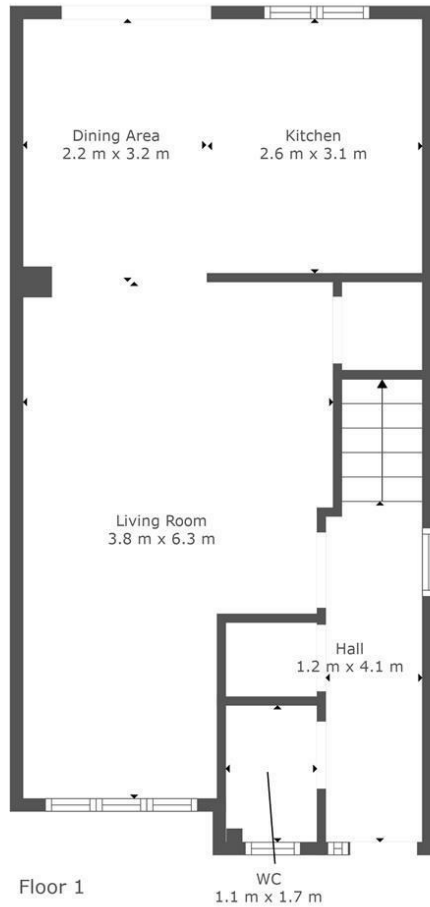












This Floorplan Is Intended To Give An Indication Of The Layout Only.

## LOCAL AUTHORITY

South Lanarkshire

## TENURE

Freehold

## COUNCIL TAX BAND

E

## VIEWINGS

By prior appointment only

Energy Efficiency Rating		
	Current	Potential
Very energy efficient - lower running costs		
(92 plus) A		
(81-91) B	83	83
(69-80) C		
(55-68) D		
(39-54) E		
(21-38) F		
(1-20) G		
Not energy efficient - higher running costs		
Scotland	EU Directive 2002/91/EC	

Agents Note: Whilst every care has been taken to prepare these particulars, they are for guidance purposes only. All measurements are approximate and are for general guidance purposes only and whilst every care has been taken to ensure their accuracy, they should not be relied upon and potential buyers/tenants are advised to recheck the measurements



**cruive**  
ESTATE AGENTS

### OFFICE ADDRESS

9 Townhead Street  
Strathaven  
ML10 6AB

### OFFICE DETAILS

01357 510088  
judithmcgill@cruive-  
estateagents.co.uk