



OFFERS OVER

**£159,950**

**Green Street**  
Stonehouse, ML9 3LW

## PROPERTY SUMMARY

Located within the semi-rural town of Stonehouse is this stunning, extended semi-detached cottage. Fully refurbished circa 2020 this deceptively spacious, immaculately maintained home is presented to the market in truly walk-in condition.

The bright and well-proportioned accommodation comprises; welcoming wood panelled reception hallway, sitting room/bedroom three, hall storage, modern two-piece cloaks/wc, sleek and tasteful modern fitted kitchen with integrated appliances open plan to generous lounge with French doors leading to rear garden.

On the upper level accessed via a turned staircase flooded with light via an overhead Velux window are two generous double bedrooms; the master bedroom has the luxury of its own modern en-suite shower room. The first-floor accommodation is completed by a modern three-piece family bathroom.

This attractive family home further benefits from gas central heating and double glazing. The fully enclosed child and pet friendly garden is laid mainly to lawn with a slabbed patio and access to the rear.

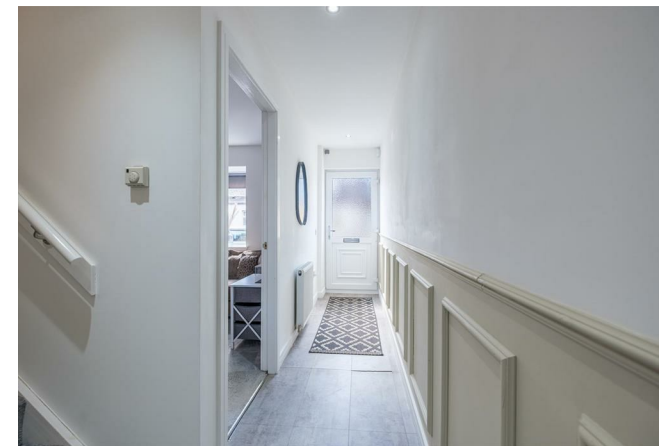
3



2



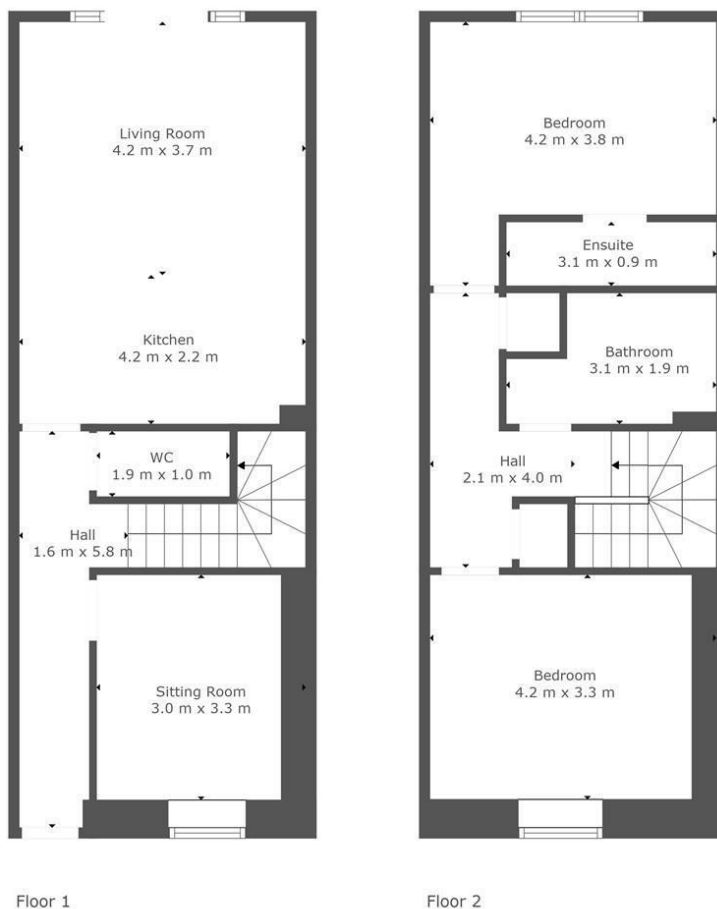
1











This Floorplan Is Intended To Give An Indication Of The Layout Only.

## LOCAL AUTHORITY

South Lanarkshire

## TENURE

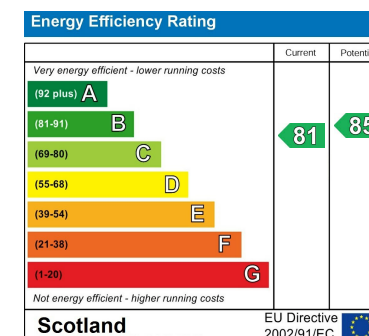
Freehold

## COUNCIL TAX BAND

D

## VIEWINGS

By prior appointment only



Agents Note: Whilst every care has been taken to prepare these particulars, they are for guidance purposes only. All measurements are approximate and are for general guidance purposes only and whilst every care has been taken to ensure their accuracy, they should not be relied upon and potential buyers/tenants are advised to recheck the measurements



**cruive**  
ESTATE AGENTS

### OFFICE ADDRESS

9 Townhead Street  
Strathaven  
ML10 6AB

### OFFICE DETAILS

01357 510088  
judithmcgill@cruive-  
estateagents.co.uk