

cruive
ESTATE AGENTS

01357 510088
FOR SALE
cruive
ESTATE AGENTS

OFFERS OVER

£295,000

Tyne Avenue
East Kilbride, G75 9PT

PROPERTY SUMMARY

Positioned on a generous plot with pleasant views across an area of pretty woodland to the rear and presented to the market in truly walk-in condition is this beautiful modern detached family home. Immaculately maintained throughout by the current owners this lovely property offers spacious and flexible accommodation within the popular family friendly development of Benthall Farm.

The tastefully decorated layout of bright and well-proportioned rooms comprises; broad and welcoming reception hallway, family/playroom, formal dining room/bedroom five with storage cupboard, lounge with French doors opening onto substantial timber decking ideal for outdoor entertaining, stunning recently fitted breakfasting kitchen, and integrated appliances, and modern two-piece cloaks/wc.

On the upper level accessed via an attractive light and airy gallery style landing are four sizeable bedrooms. The master bedroom has its own modern three-piece en-suite shower room and fitted storage. bedroom two also benefits from fitted storage. Completing the first-floor accommodation is a modern three-piece family bathroom, hall storage cupboard, and access hatch to partially floored loft space.

This lovely family home further benefits from gas central heating, double glazing, and monoblock driveway. The fully enclosed rear garden is child and pet friendly and offers a great space for children playing or entertaining friends.

4



2



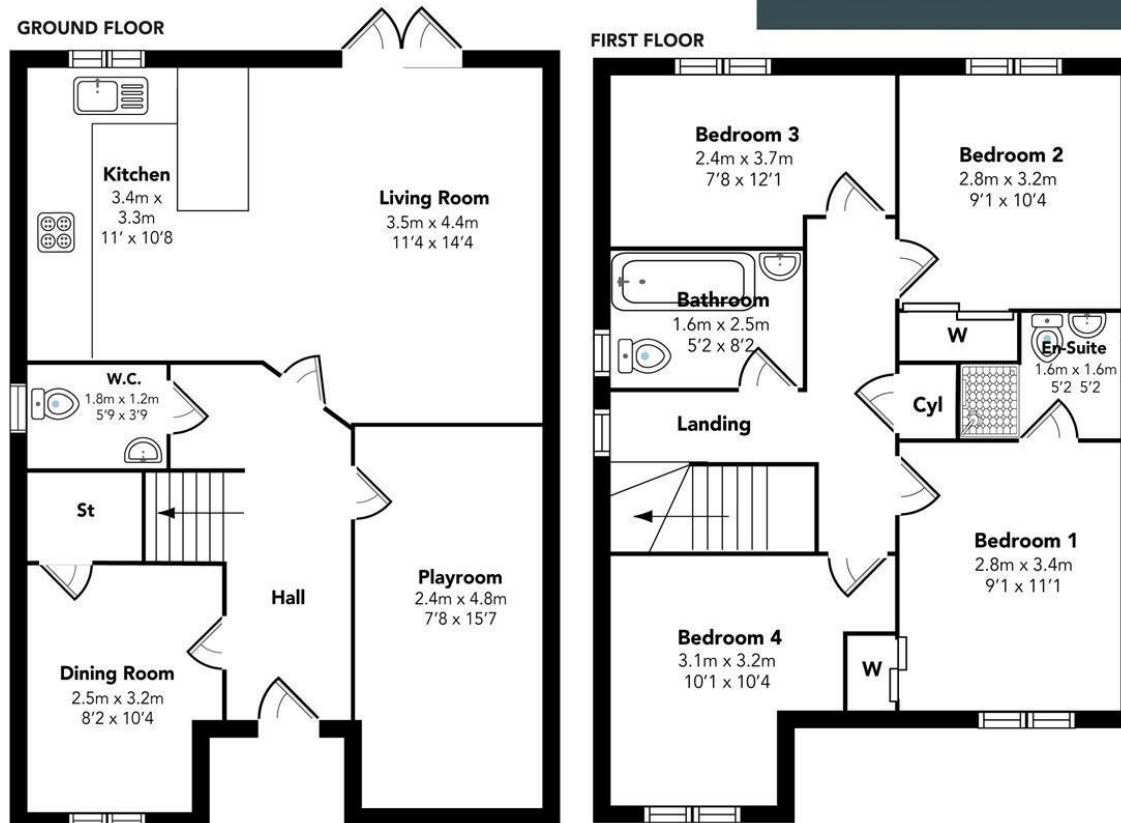
3











Floorplans are indicative only - not to scale
Produced by Plushplans

LOCAL AUTHORITY

South Lanarkshire

TENURE

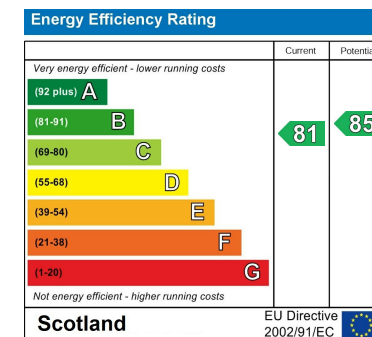
Freehold

COUNCIL TAX BAND

F

VIEWINGS

By prior appointment only



Agents Note: Whilst every care has been taken to prepare these particulars, they are for guidance purposes only. All measurements are approximate and are for general guidance purposes only and whilst every care has been taken to ensure their accuracy, they should not be relied upon and potential buyers/tenants are advised to recheck the measurements



OFFICE ADDRESS

9 Townhead Street
Strathaven
ML10 6AB

OFFICE DETAILS

01357 510088
judithmcgill@cruive-
estateagents.co.uk