

cruise
ESTATE AGENTS

OFFERS OVER

£185,000

Twister Crescent
Stonehouse, ML9 3FT

PROPERTY SUMMARY

Perfectly positioned at the end of a quiet and peaceful cul de sac with stunning open country views is this immaculately presented three-bedroom modern end-terrace villa. Enjoying a wonderful location on the periphery of beautiful South Lanarkshire countryside, this lovely home offers bright and spacious accommodation over two levels, and a fully enclosed garden that has been well-tended by the current owners. The property is in truly walk-in condition and is sure to appeal to a broad section of buyers.

The stylishly presented accommodation comprises; reception hallway, modern two-piece cloaks/wc, generous front facing lounge, modern dining size kitchen with integrated appliances, large under-stairs storage/pantry cupboard, and French doors leading onto the rear garden.

On the upper level are three well-proportioned bedrooms; two double bedrooms and a single bedroom. The master bedroom also benefits from having its own modern three-piece en-suite shower room, fitted wardrobes, and the best of the lovely views across the neighbouring countryside. The first floor accommodation is completed by a modern three-piece family bathroom with over-bath shower.

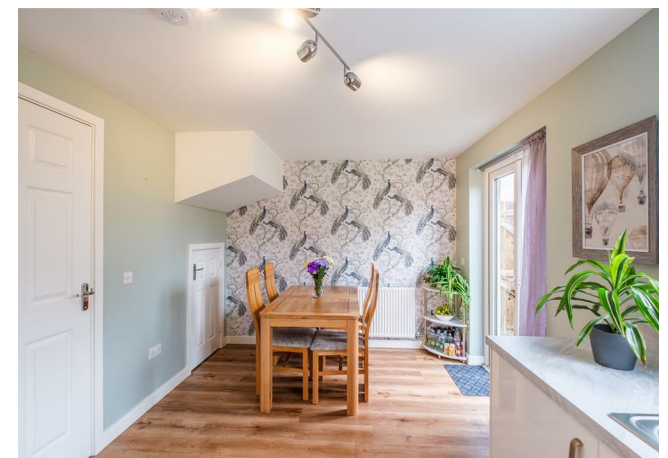
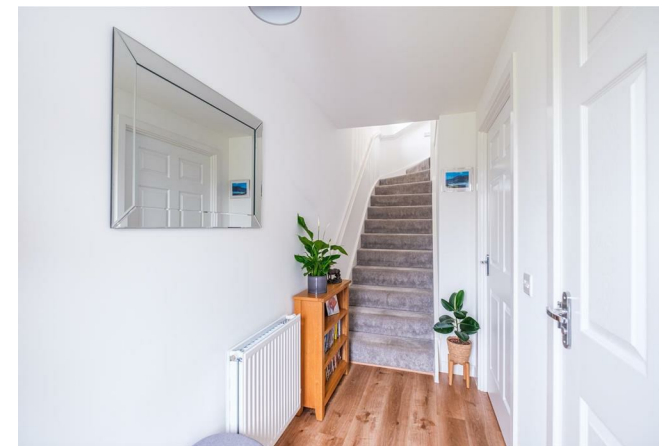
3



2



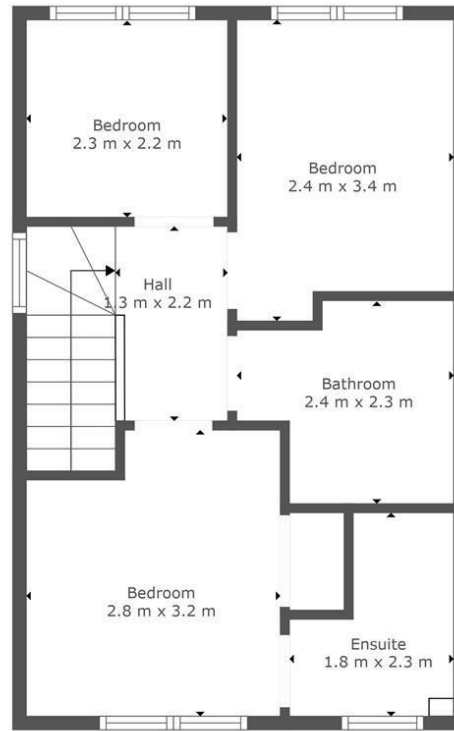
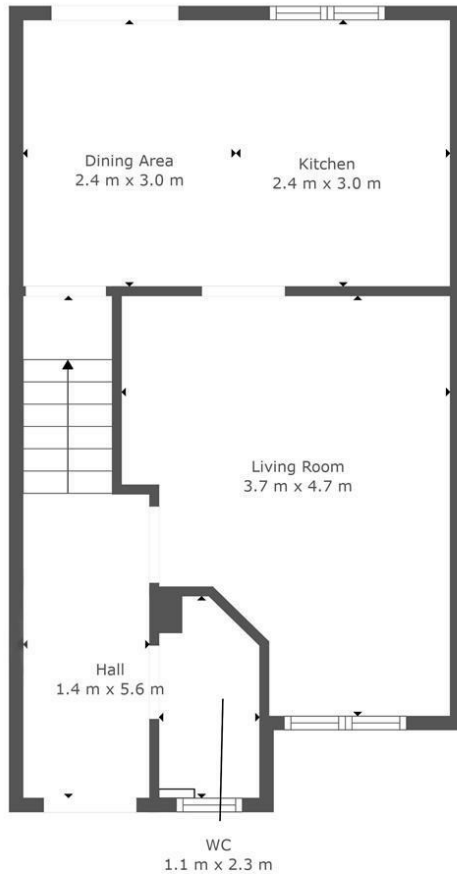
2











This Floorplan Is Intended To Give An Indication Of The Layout Only.



LOCAL AUTHORITY

South Lanarkshire

TENURE

Freehold

COUNCIL TAX BAND

D

VIEWINGS

By prior appointment only

Energy Efficiency Rating		
	Current	Potential
Very energy efficient - lower running costs		
(92 plus) A		
(81-91) B	81	81
(69-80) C		
(55-68) D		
(39-54) E		
(21-38) F		
(1-20) G		
Not energy efficient - higher running costs		
Scotland	EU Directive 2002/91/EC	

Agents Note: Whilst every care has been taken to prepare these particulars, they are for guidance purposes only. All measurements are approximate and are for general guidance purposes only and whilst every care has been taken to ensure their accuracy, they should not be relied upon and potential buyers/tenants are advised to recheck the measurements



OFFICE ADDRESS
9 Townhead Street
Strathaven
ML10 6AB

OFFICE DETAILS
01357 510088
judithmcgill@cruive-
estateagents.co.uk