



OFFERS OVER

£127,000

Ailsa Court
Hamilton, ML3 8XJ

PROPERTY SUMMARY

Nicely positioned within the quiet cul de sac of Alisa Court is this immaculately maintained two-bedroom mid terrace villa. Stylishly presented, in truly walk-in condition both inside and out, and with a popular location this lovely home is sure appeal to a broad section of buyers.

Upon arriving at the property, it is evident the current owners have taken great care of their home; with a recently fitted stylish grey UPVC door and recently cleaned roof the property looks extremely smart from the off. The accommodation then comprises; entrance vestibule, bright and spacious front facing lounge with ample space for dining table and chairs, modern fitted kitchen with integral oven, hob, hood, and microwave, useful pantry cupboard, and access to substantial raised timber deck ideal for outdoor entertaining.

On the upper floor you will find two well-proportioned double bedrooms. The master bedroom located to the front of the property is the larger of the two, with fitted wardrobes. The double bedroom to the rear is currently being used as a large walk-in dressing room. Completing the accommodation is a modern three-piece shower room.

2



1



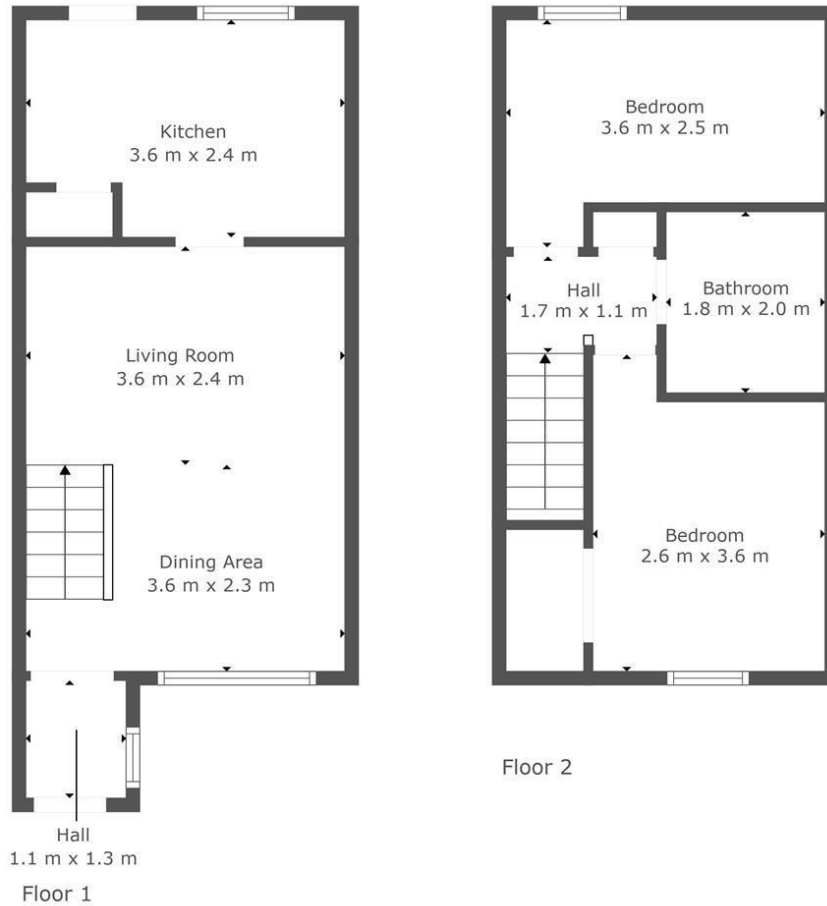
1











This Floorplan Is Intended To Give An Indication Of The Layout Only.

LOCAL AUTHORITY

South Lanarkshire

TENURE

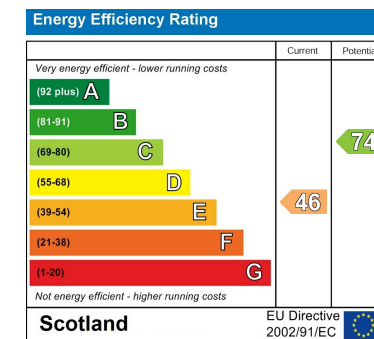
Freehold

COUNCIL TAX BAND

B

VIEWINGS

By prior appointment only



Agents Note: Whilst every care has been taken to prepare these particulars, they are for guidance purposes only. All measurements are approximate and are for general guidance purposes only and whilst every care has been taken to ensure their accuracy, they should not be relied upon and potential buyers/tenants are advised to recheck the measurements



cruive
ESTATE AGENTS

OFFICE ADDRESS

9 Townhead Street
Strathaven
ML10 6AB

OFFICE DETAILS

01357 510088
judithmcgill@cruive-
estateagents.co.uk