



OFFERS OVER

£159,000

Burn Bridge Drive
Strathaven, ML10 6UP

PROPERTY SUMMARY

Tucked away at the end of a quiet, child friendly cul de sac with a Southwest facing garden to the rear is this attractive extended modern two bedroom semi-detached villa. With a pretty open outlook to the rear across the surrounding countryside, beautifully presented interior, and easily maintained garden the property is sure to appeal to a broad section of buyers.

The well-proportioned accommodation comprises; entrance vestibule, spacious front facing lounge with understairs storage, stylish modern fitted dining size kitchen with oven, hob, and hood, open to family/tv room flooded with light from Velux window overhead, and with French doors opening onto patio, utility room with side access, and modern two-piece cloaks/wc.

On the upper you will find two generous bedrooms; the master with fitted storage, and the bedroom to the rear enjoying the best of the stunning views. Completing the first-floor accommodation is a modern three-piece family bathroom with over-bath shower, and access hatch to loft.

2



1



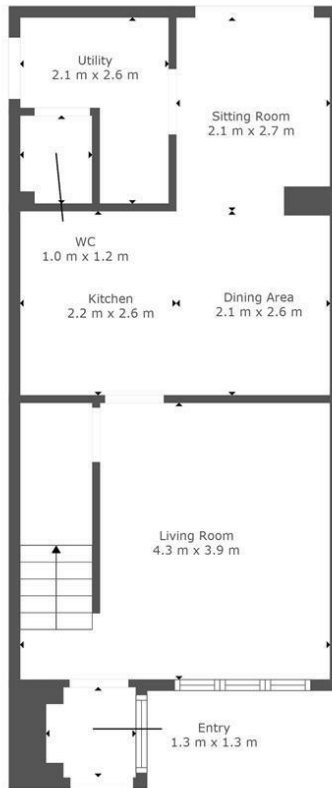
2



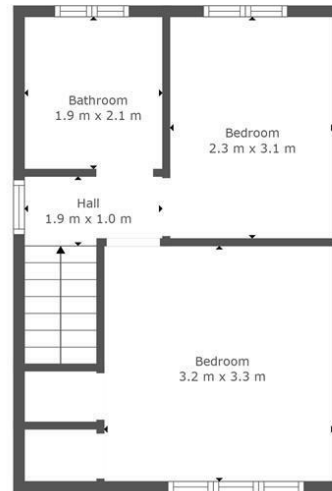








Floor 1



Floor 2

TOTAL: 70 m²
FLOOR 1: 42 m², FLOOR 2: 28 m²

This Floorplan Is Intended To Give An Indication Of The Layout Only.



OFFICE ADDRESS
9 Townhead Street
Strathaven
ML10 6AB

OFFICE DETAILS
01357 510088
judithmcgill@cruive-
estateagents.co.uk

LOCAL AUTHORITY

South Lanarkshire

TENURE

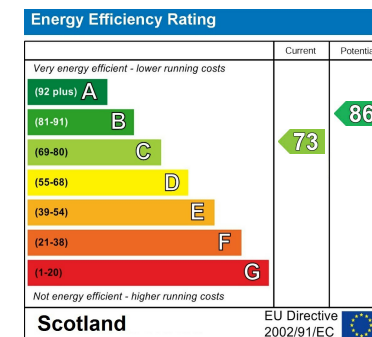
Freehold

COUNCIL TAX BAND

E

VIEWINGS

By prior appointment only



Agents Note: Whilst every care has been taken to prepare these particulars, they are for guidance purposes only. All measurements are approximate and are for general guidance purposes only and whilst every care has been taken to ensure their accuracy, they should not be relied upon and potential buyers/tenants are advised to recheck the measurements